

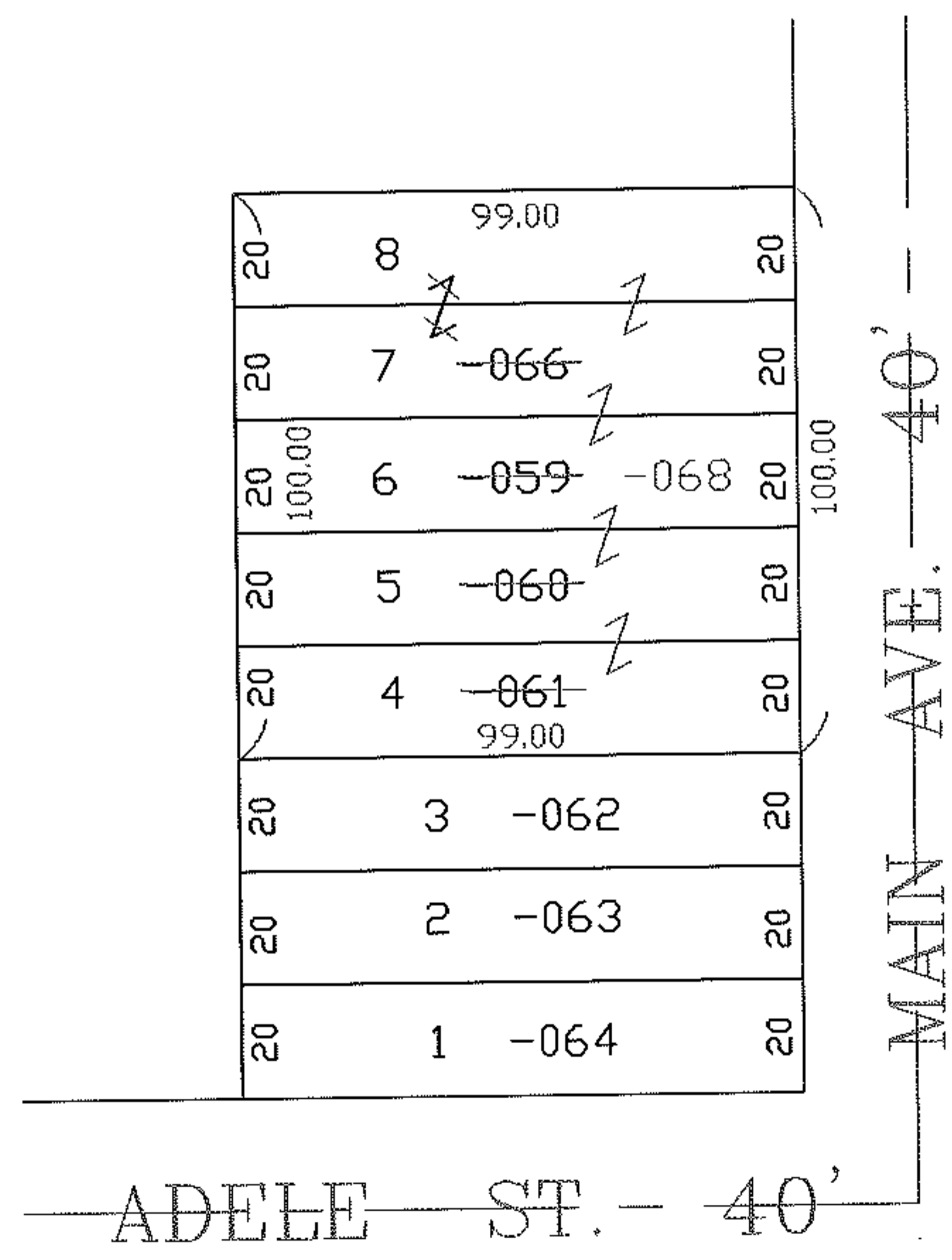
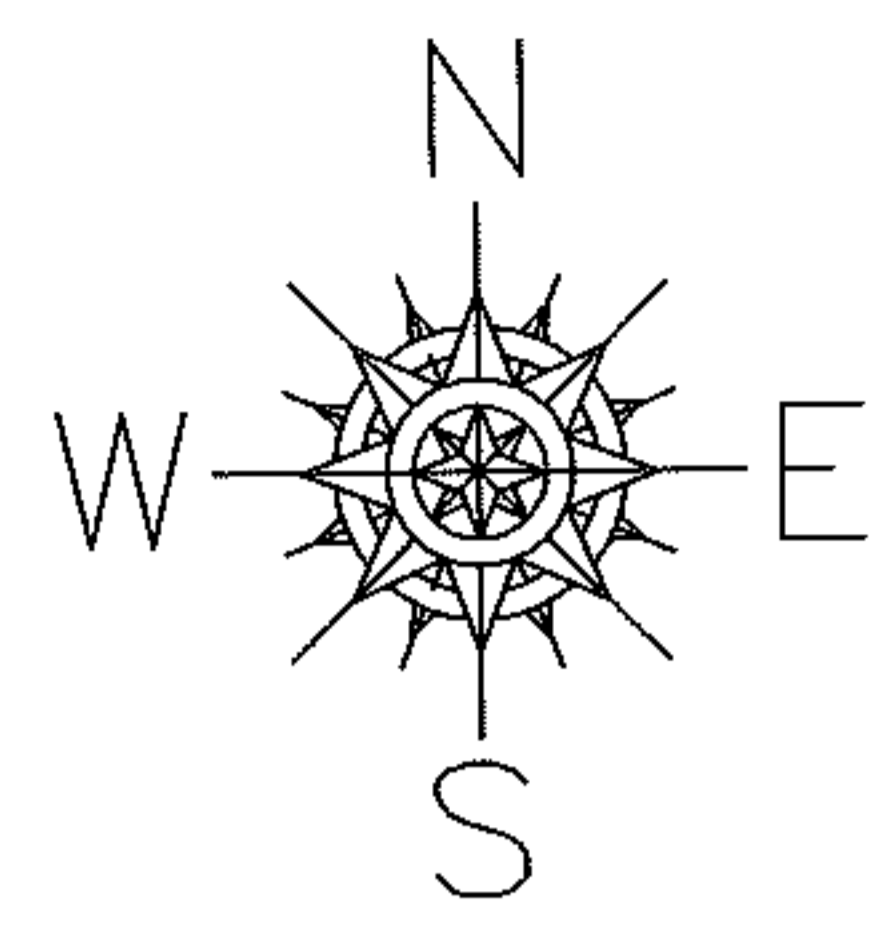
RASTER

PARENT PARCEL: 07-00-007-106-059, -060, -061, -066
CHILD PARCEL: 07-00-007-106-068
STARTING POINT: SL 4 THRU SL 8 IN RIDGEVILLE HEIGHTS V. 10 PG. 11-12

08-01668-C

COMBINATION

- ~~07-00-007-106-059~~
~~20 X 99~~
- ~~07-00-007-106-060~~
~~20 X 99~~
- ~~07-00-007-106-061~~
~~20 X 99~~
- ~~07-00-007-106-066~~
~~40 X 99~~
- 07-00-007-106-068
100 X 99



SPLITS/DEEDS PROCESSED

LORAIN COUNTY TAX MAP DEPARTMENT
226 MIDDLE AVE. ELYRIA, OHIO

SURVEYED BY: NONE
 CLOSURE: 0.00 : 10,000
 MAP PAGE(S): 07-00-007-A
 APPROVED BY: TJS DATE: 07/09/08
 SCALE: 1" = 100 PRIOR INSTRUMENT: DV XXXX/XXX