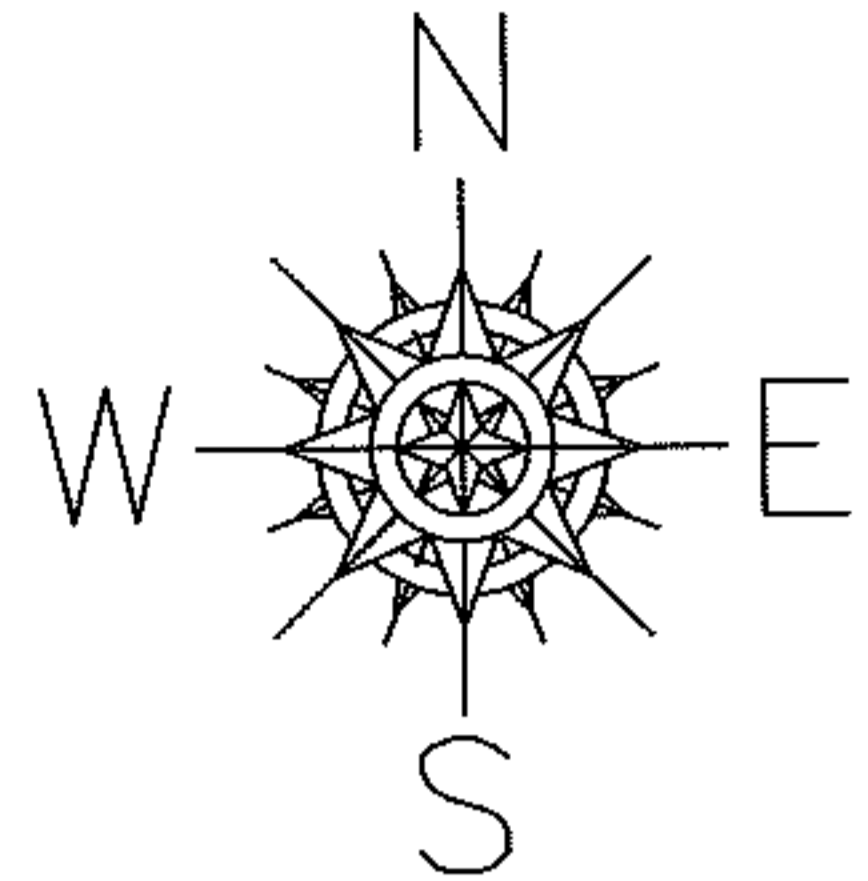
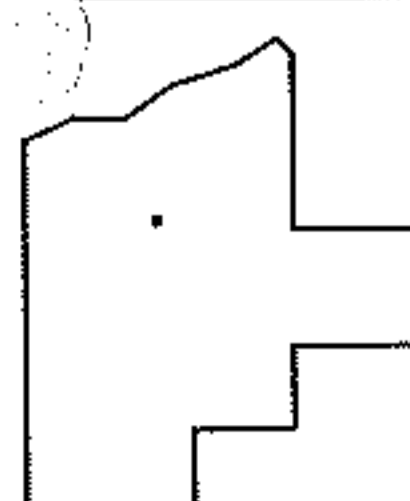
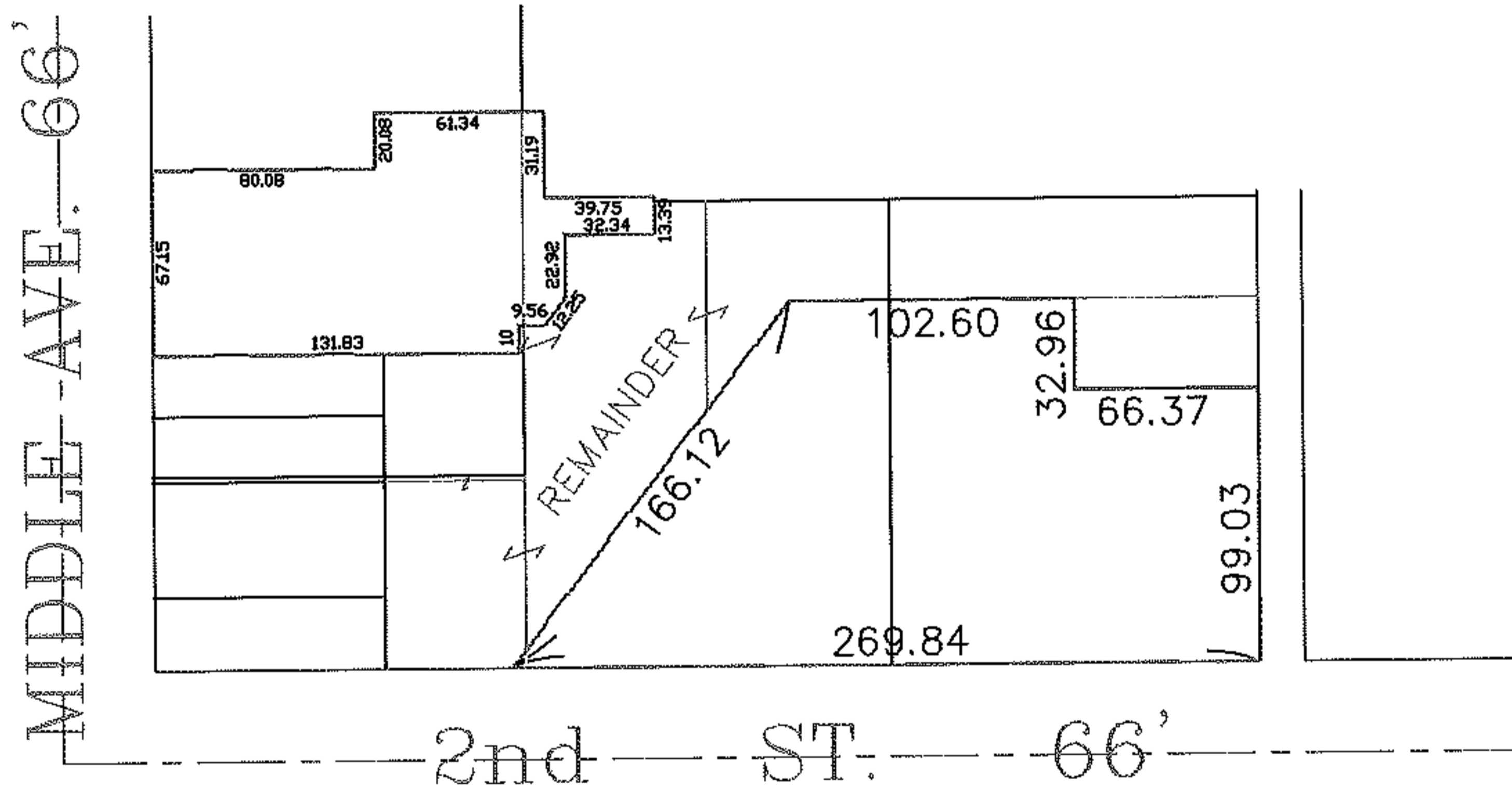


PARENT PARCEL: 06-26-063-000-038, -039, -041, -042, -043, -044, -073, -074, -011
CHILD PARCEL: XX-XX-XXX-XXX-XXX
STARTING POINT: XXXXXX

NO. 08-01664-D



DEED CHECK
REMAINDER &
COMMON AREA OF
TOKAR TOWER



SPLITS/DEEDS PROCESSED
LORAIN COUNTY TAX MAP DEPARTMENT
226 MIDDLE AVE. ELYRIA, OHIO

SURVEYED BY: XXXXXXXXXXXX
CLOSURE: XXXXXX
MAP PAGE(S): 6-120
APPROVED BY: TJS DATE: 07/07/08
SCALE: 1" = 100' PRIOR INSTRUMENT: DV XXXX/XXX