

RASTER

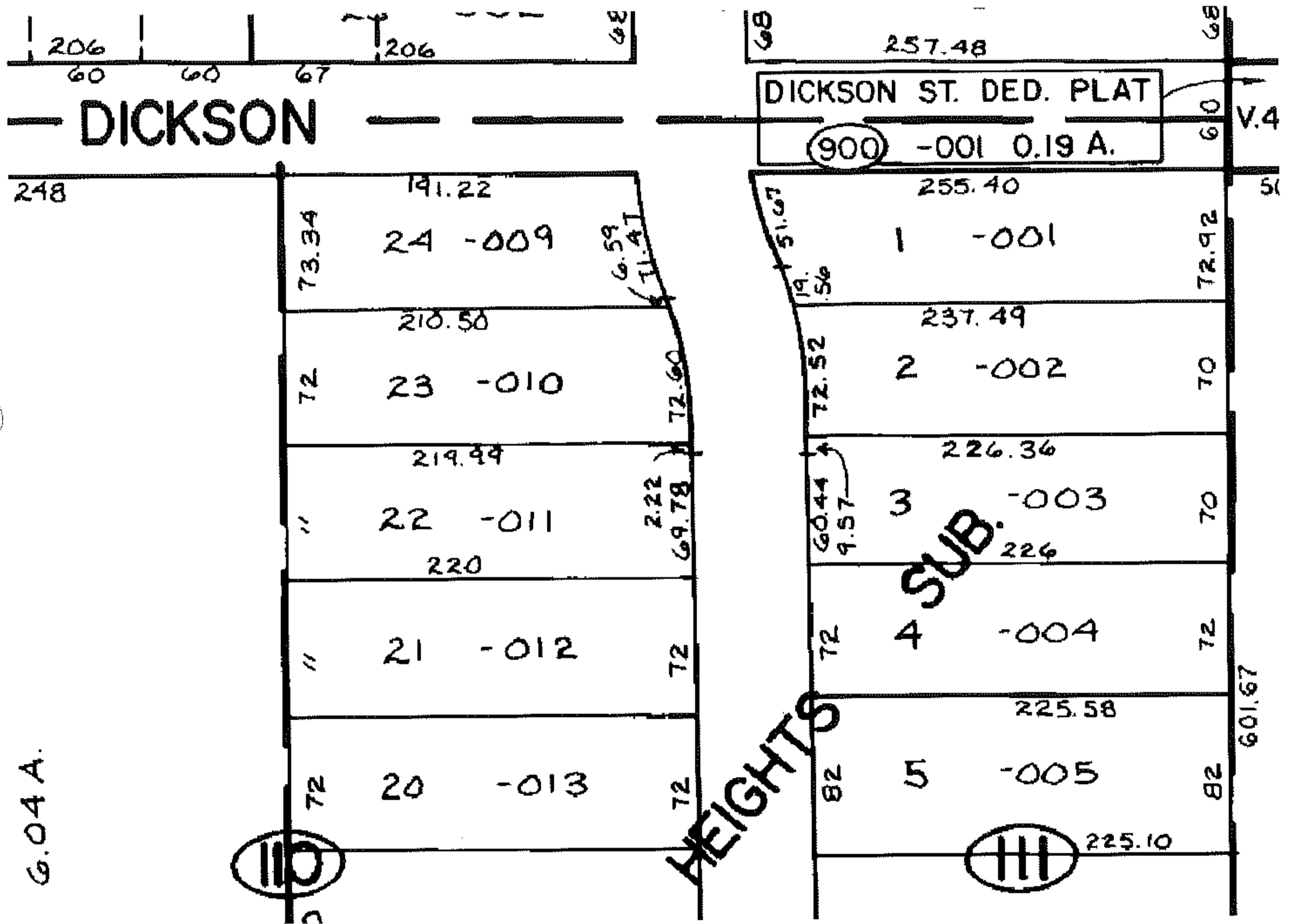
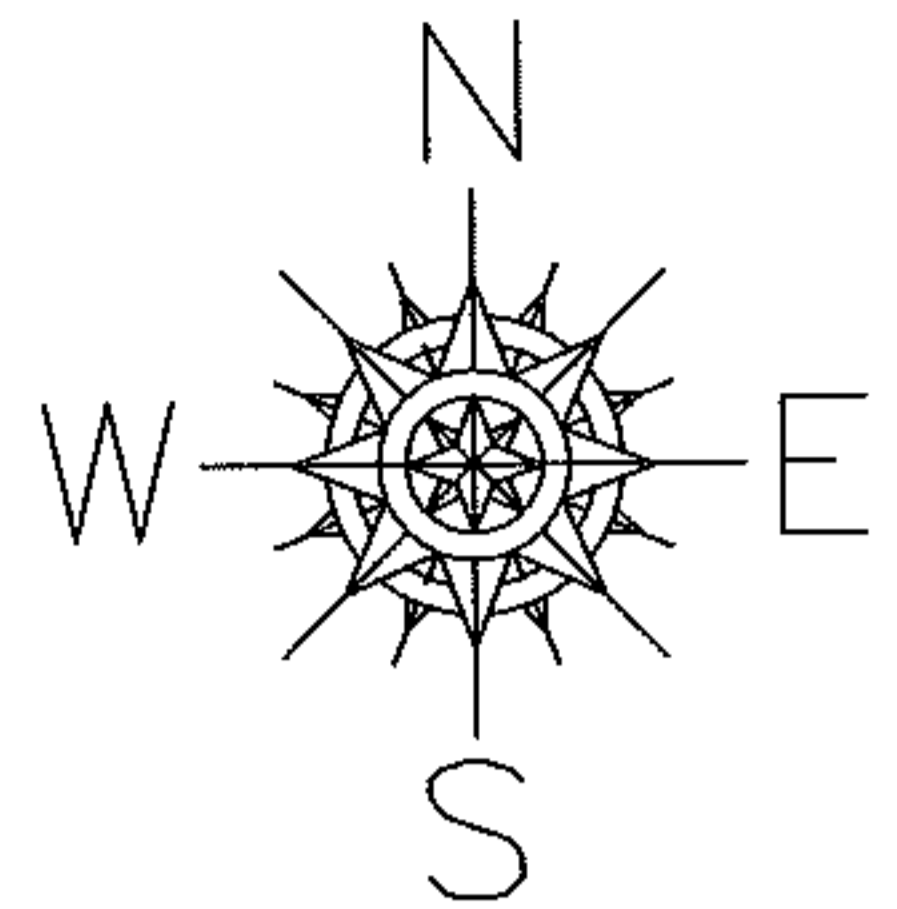
PARENT PARCEL: 18-00-022-110-009

CHILD PARCEL: --SAME--

STARTING POINT: S/L 24

08-01657-C

DUPLICATE DEPTH CORR ONLY
NO MAP CORRECTION



SPLITS/DEEDS PROCESSED

LORAIN COUNTY TAX MAP DEPARTMENT
226 MIDDLE AVE. ELYRIA, OHIO

SURVEYED BY: N/A

CLOSURE: N/A

MAP PAGE(S): 18-00-022-B

APPROVED BY: DRH DATE: 8/25/2008

SCALE: 1" = 100 PRIOR INSTRUMENT: DV 950/0128