

RASTER

PARENT PARCEL: 02-02-026-104-018

CHILD PARCEL: --SAME--

STARTING POINT: S/L 13

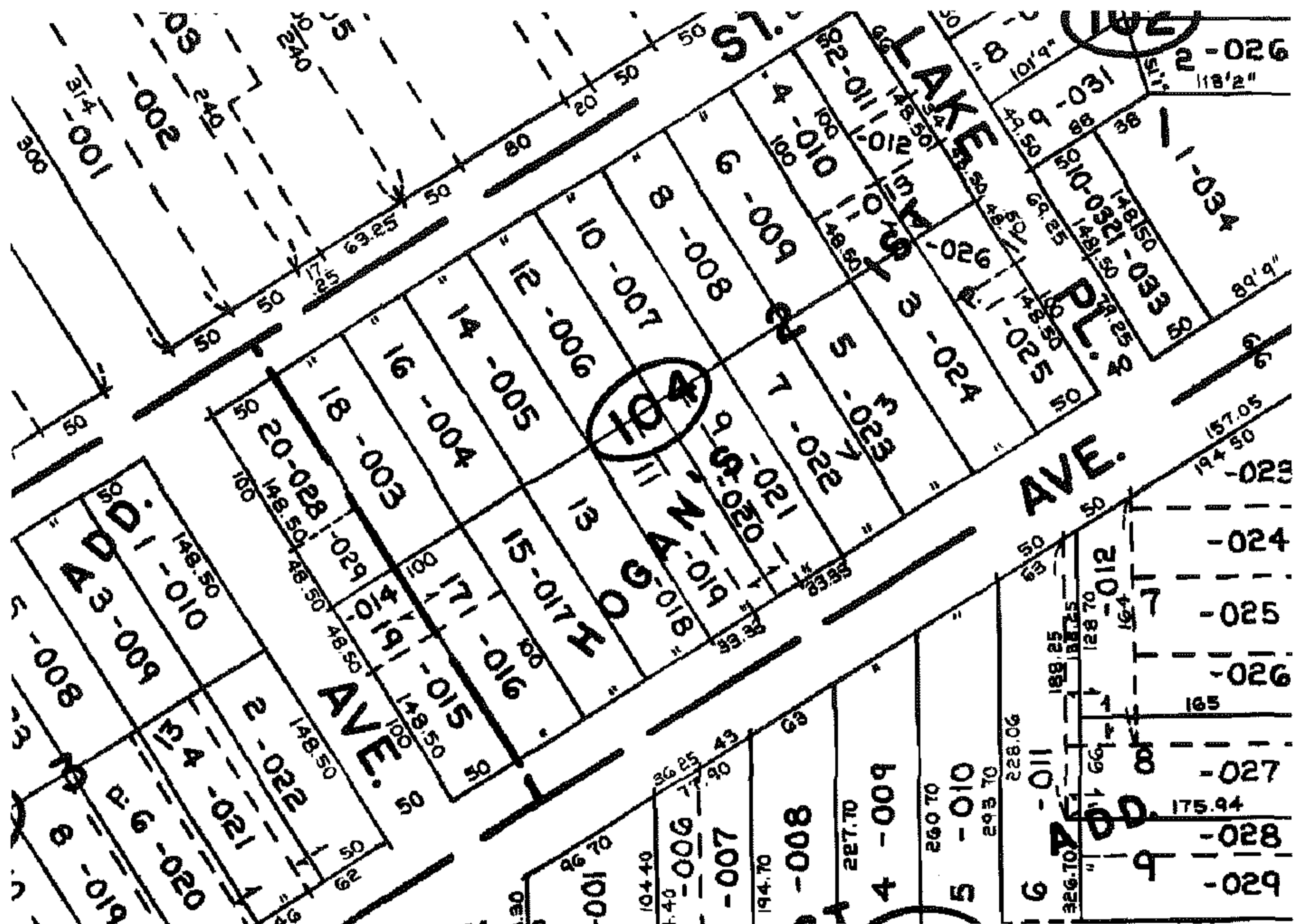
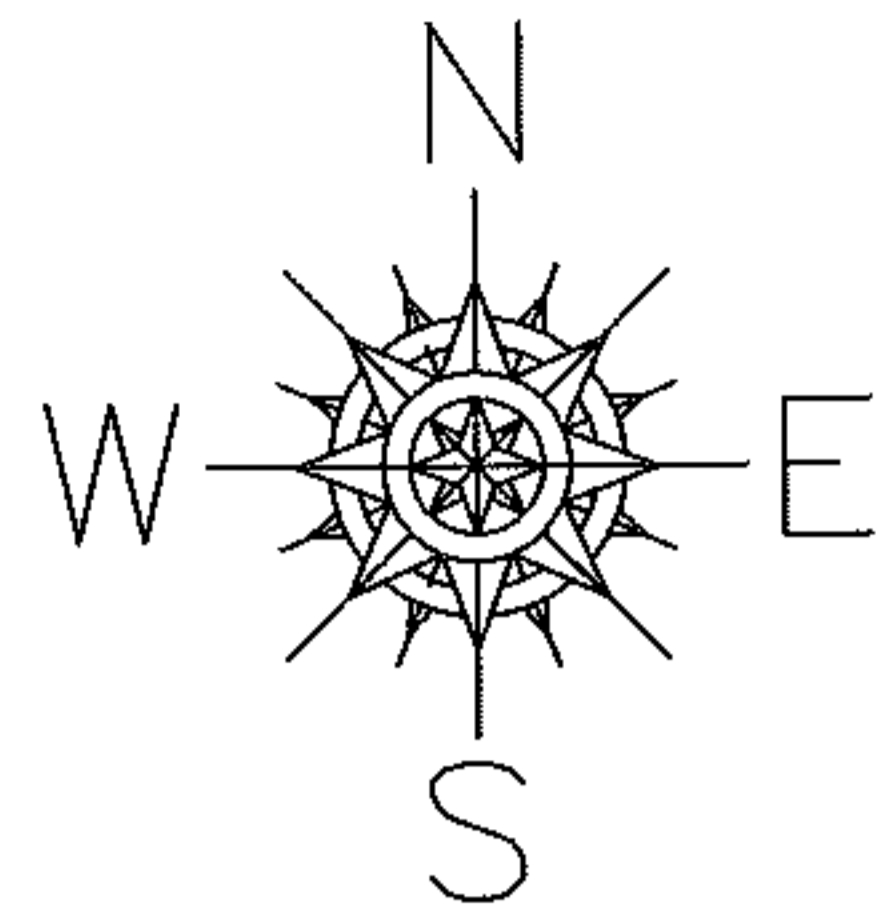
08-01654-C

DEPTH CORR. PER PLAT

02-02-026-104-018

~~50 x 148~~

50 x 148.50



SPLITS/DEEDS PROCESSED

LORAIN COUNTY TAX MAP DEPARTMENT
226 MIDDLE AVE. ELYRIA, OHIO

SURVEYED BY: N/A

CLOSURE: N/A

MAP PAGE(S): 02-02-026-A

APPROVED BY: DRH DATE: 8/25/2008

SCALE: NOT TO SCALE PRIOR INSTRUMENT: 20080251337