

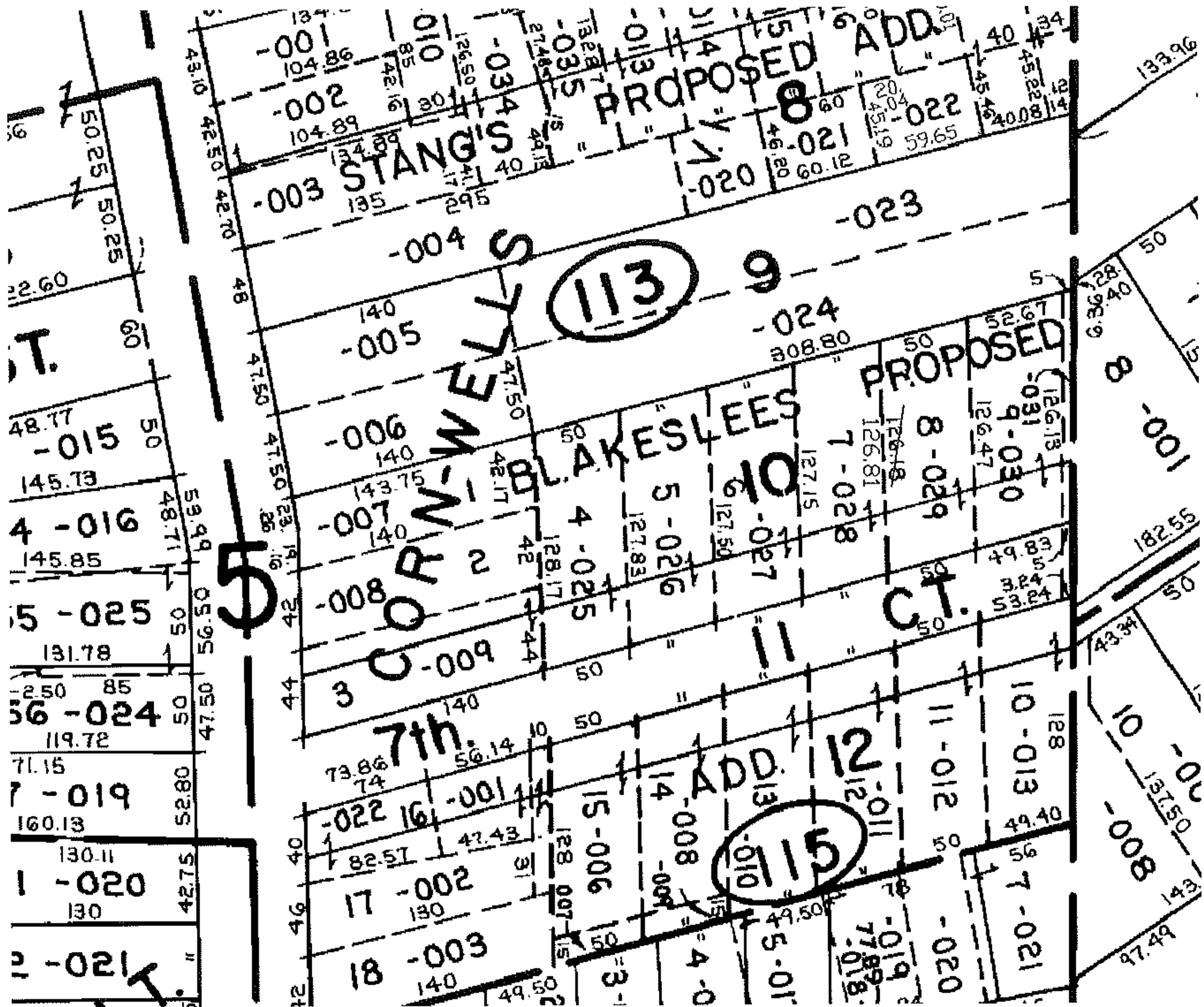
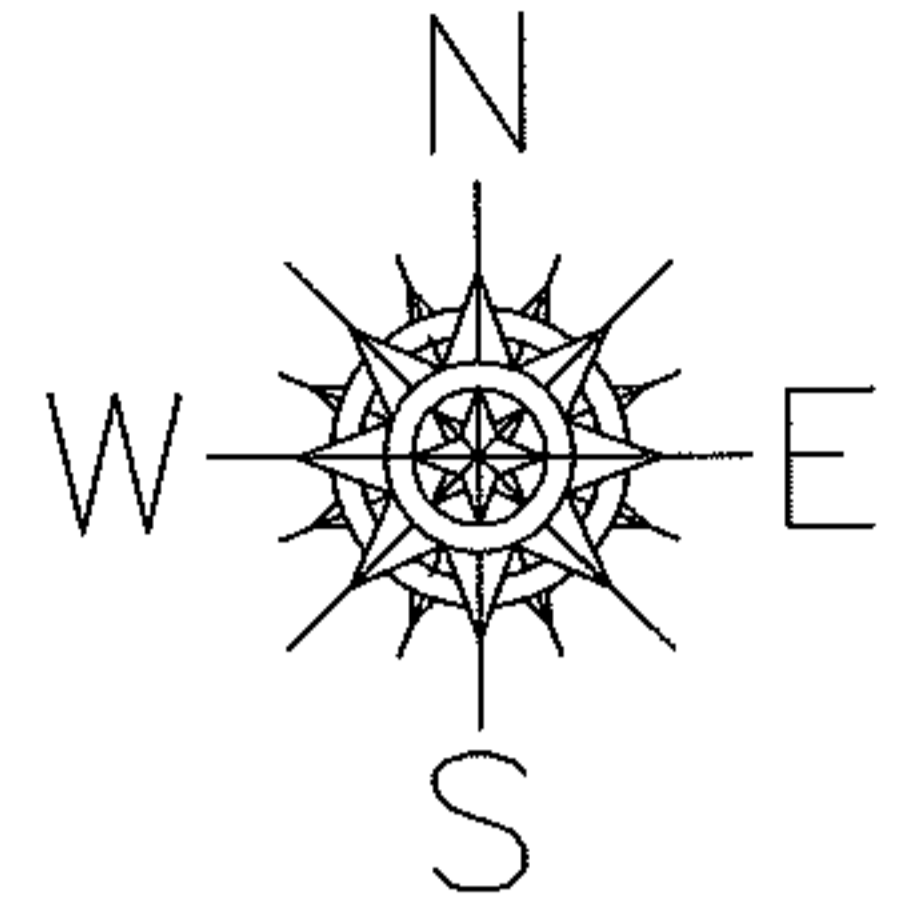
PARENT PARCEL: 02-01-005-113-028

CHILD PARCEL: --SAME--

STARTING POINT:

08-01648-C

DEPTH CORR.
PER DEED



SPLITS/DEEDS PROCESSED

LORAIN COUNTY TAX MAP DEPARTMENT
226 MIDDLE AVE. ELYRIA, OHIO

SURVEYED BY: N/A

CLOSURE: N/A

MAP PAGE(S): 02-01-004-B

APPROVED BY: DRH DATE: 7/25/2008

SCALE: NOT TO SCALE PRIOR INSTRUMENT: 20070225061