

RASIER

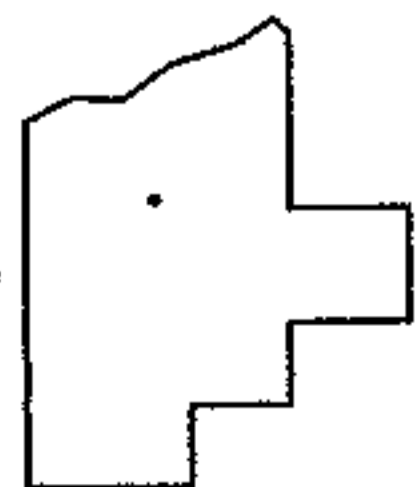
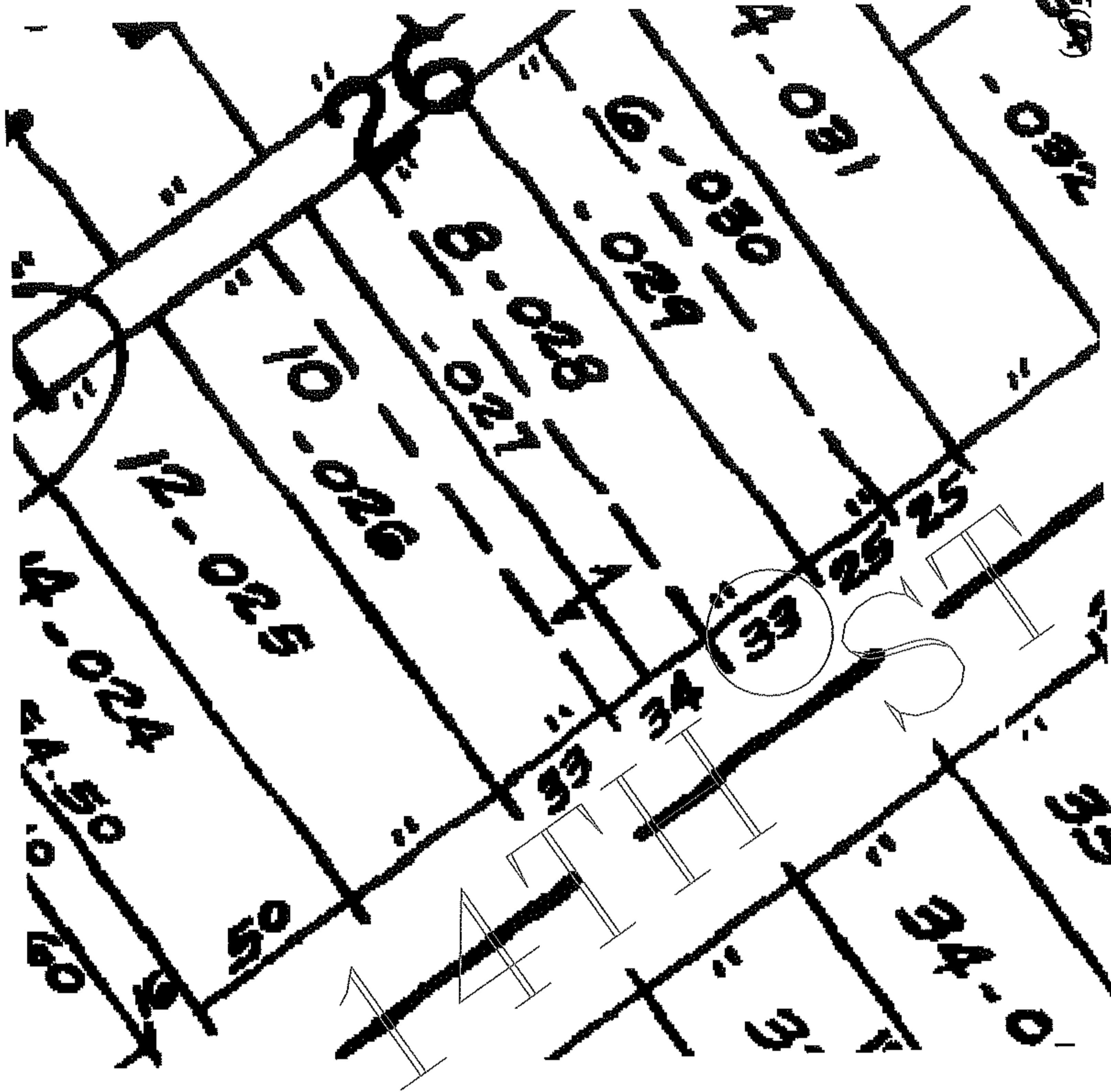
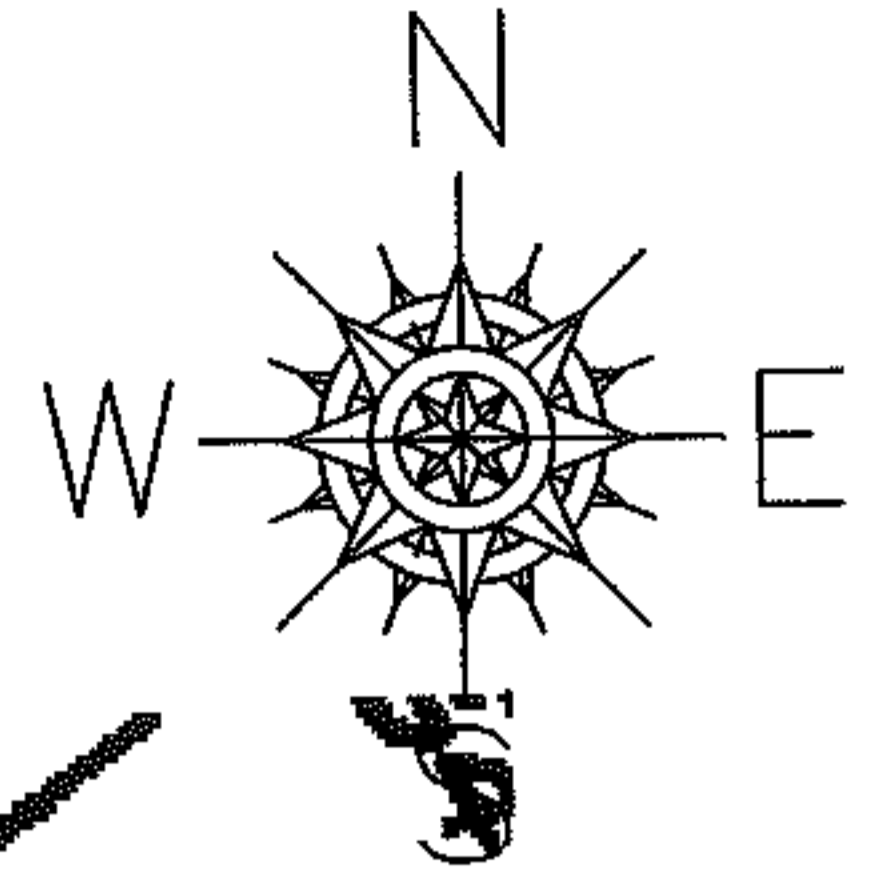
PARENT PARCEL: 02-01-003-131-028

08-01645-C

CHILD PARCEL: --SAME--

STARTING POINT: S.L. 8 IN SEHAH CHAMBERLAIN TRUSTEE'S ALLOTMENT

# FRONTAGE CORR PER MAP & DEED



## SPLITS/DEEDS PROCESSED

LORAIN COUNTY TAX MAP DEPARTMENT  
226 MIDDLE AVE. ELYRIA, OHIO

SURVEYED BY: N/A

CLOSURE: N/A

MAP PAGE(S): 02-01-003-F

APPROVED BY: DRH DATE: 5/13/2008

SCALE: NOT TO SCALE PRIOR INSTRUMENT: 20080252595