

RASER

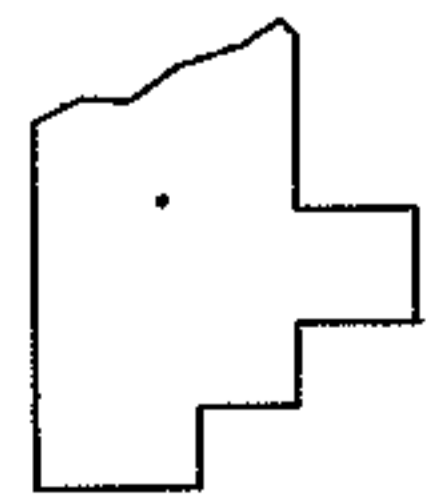
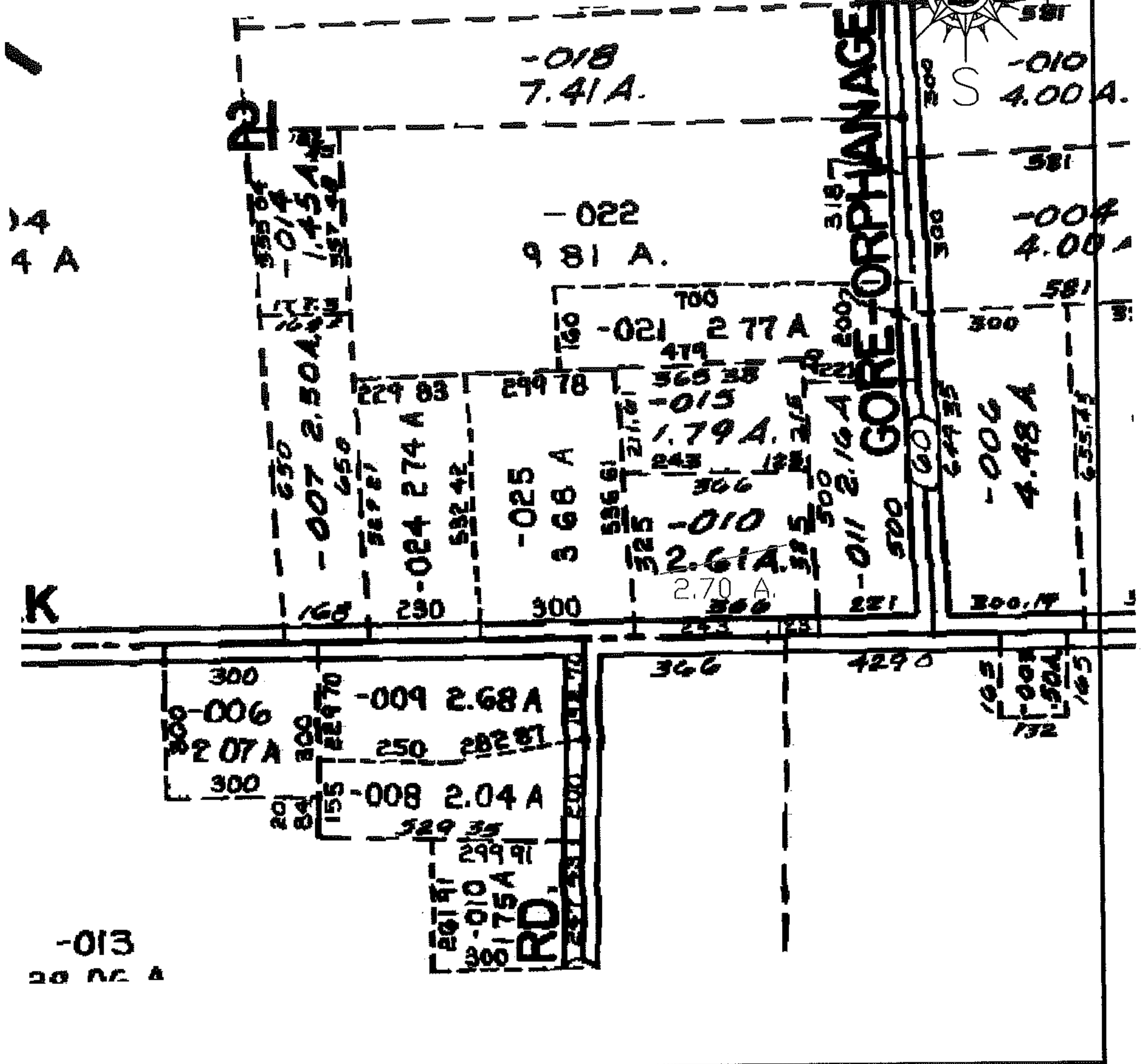
PARENT PARCEL: 13-11-021-000-010

08-01634-A

CHILD PARCEL: --SAME--

STARTING POINT: INT CL GORE ORPHANAGE AND RT. 20

AC. CORR.
PER DEEDS



SPLITS/DEEDS PROCESSED

LORAIN COUNTY TAX MAP DEPARTMENT
226 MIDDLE AVE. ELYRIA, OHIO

SURVEYED BY: N/A
 CLOSURE: N/A
 MAP PAGE(S): 13-A
 APPROVED BY: DRH DATE: 4/10/2008
 SCALE: 1" = 100 PRIOR INSTRUMENT: 1250/98