

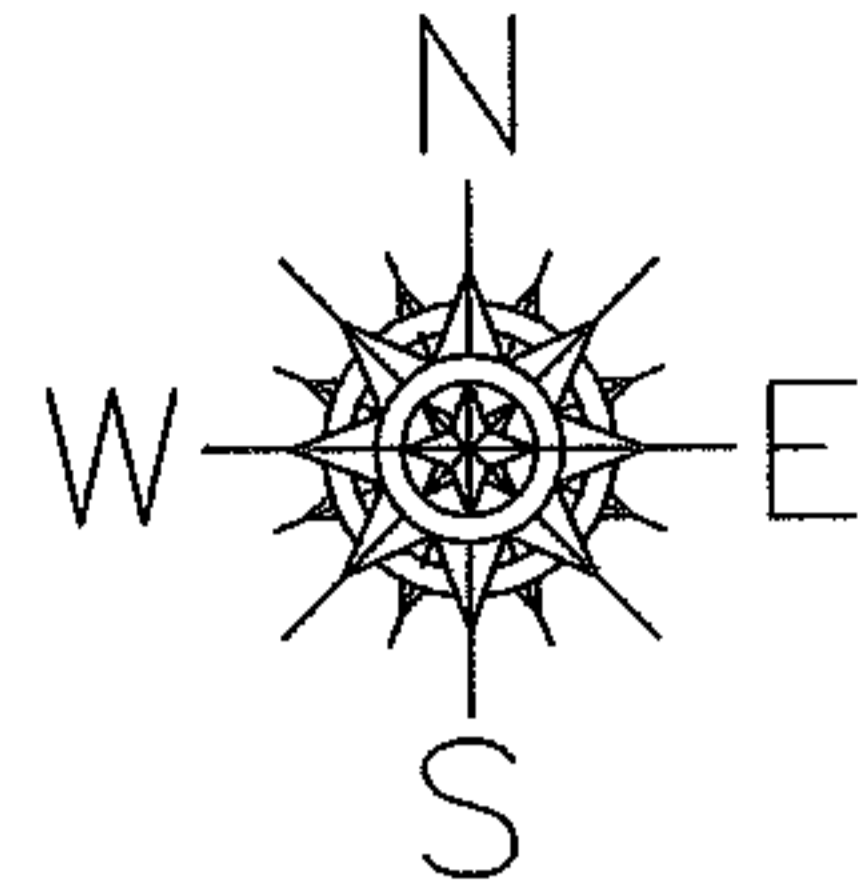
RASTER

PARENT PARCEL: 14-00-009-000-013 & 14-00-012-000-025 & 14-00-013-000-009

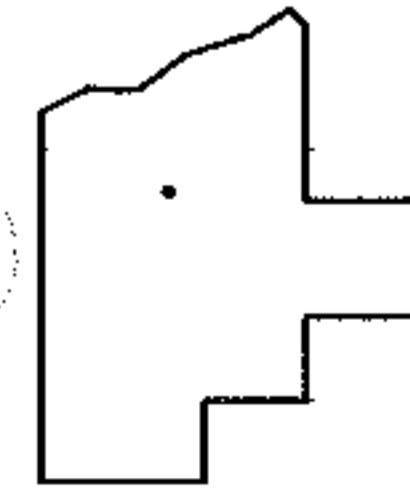
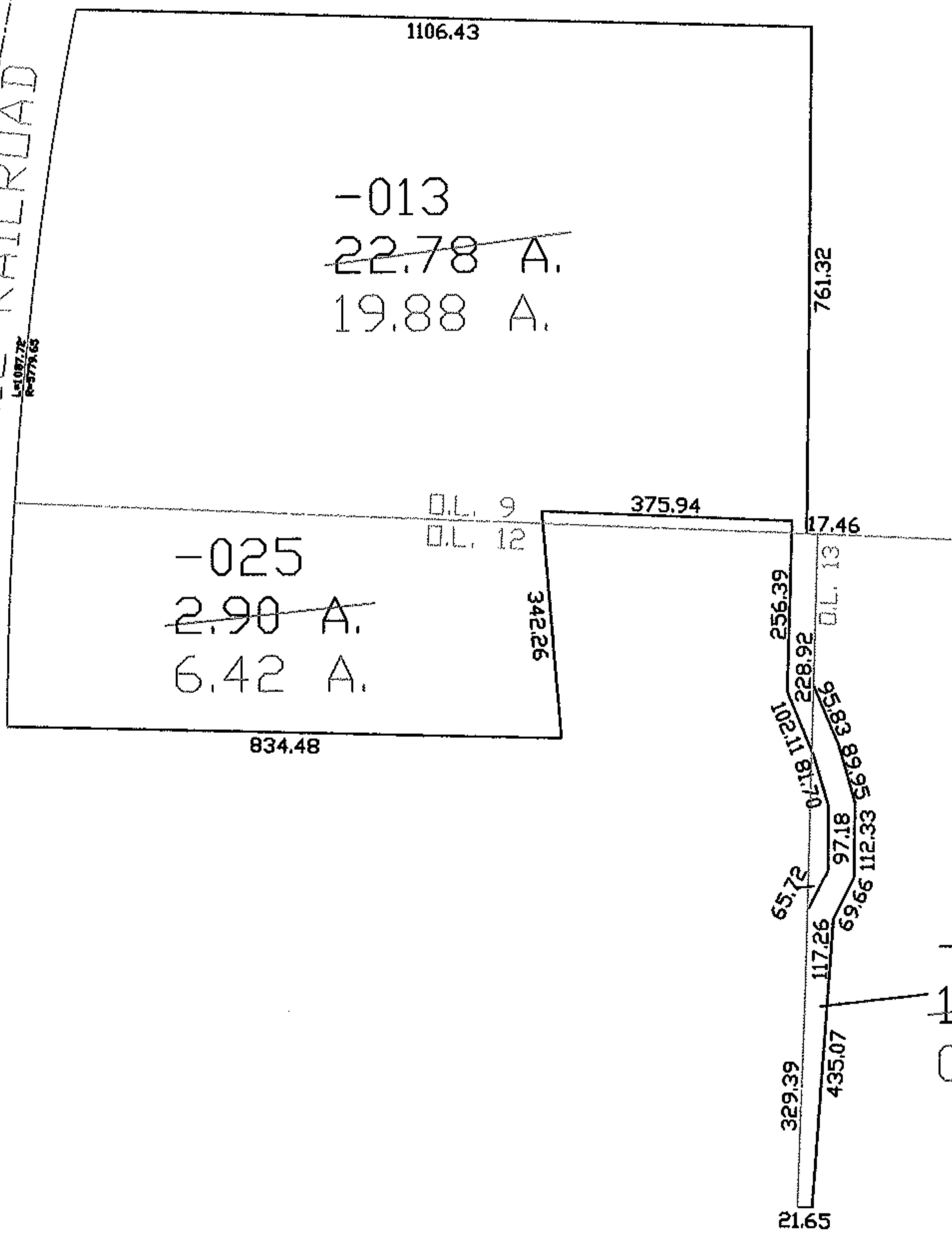
08-01633-D

CHILD PARCEL: --SAME--

STARTING POINT: NE CORNER OF O.L. 12



WHEELING & LAKE
ERIE RAILROAD



SPLITS/DEEDS PROCESSED

LORAIN COUNTY TAX MAP DEPARTMENT
226 MIDDLE AVE. ELYRIA, OHIO

SURVEYED BY: SCOTT D. ENGLAND
CLOSURE: 1:10,000
MAP PAGE(S): 14-00-009-B,14-00-012-B,14-00-013-A
APPROVED BY: DRH DATE: 4/10/2008
SCALE: 1" = 300 PRIOR INSTRUMENT: 20070228333