

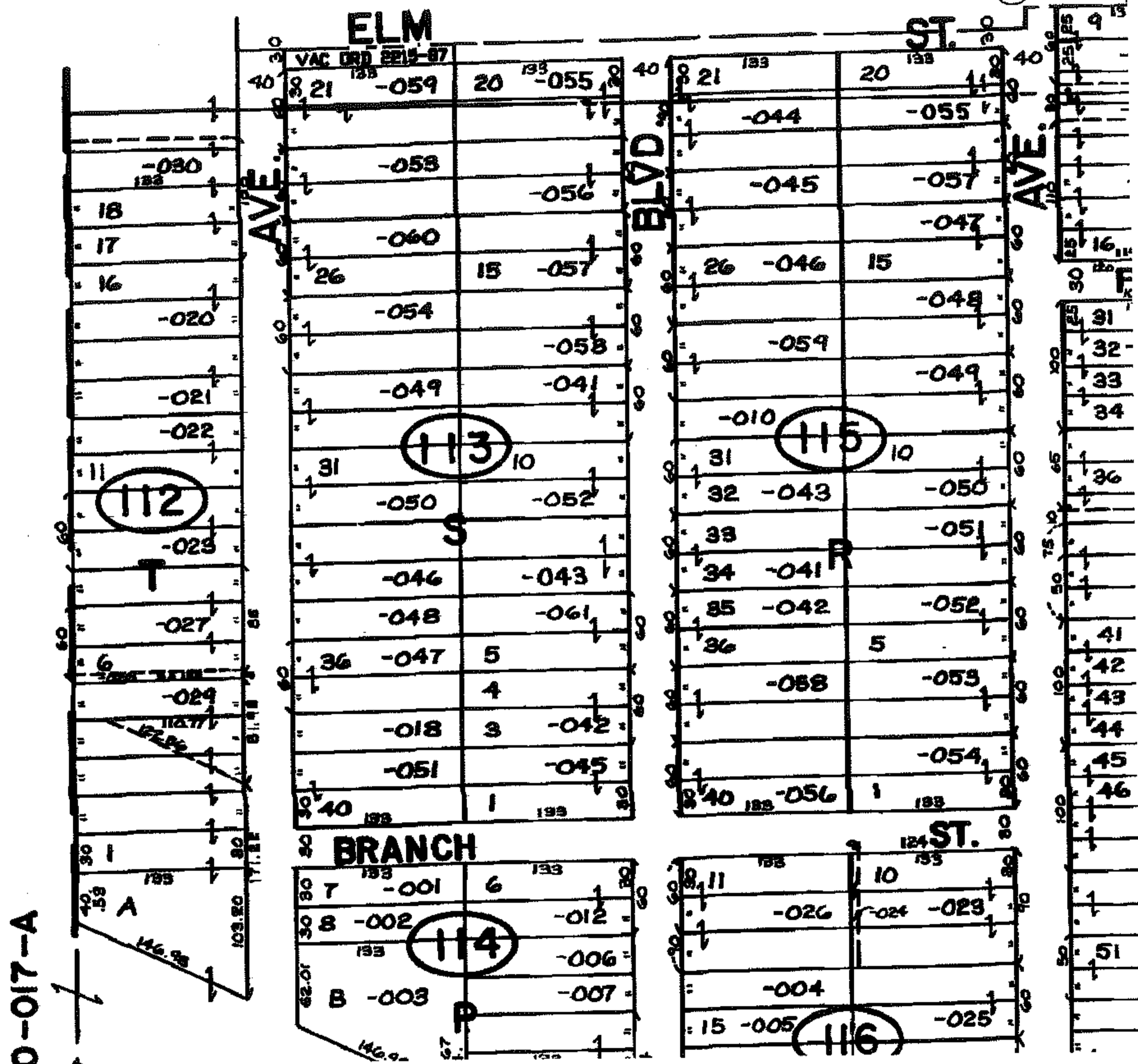
PARENT PARCEL: 07-00-017-113-059

CHILD PARCEL: --SAME--

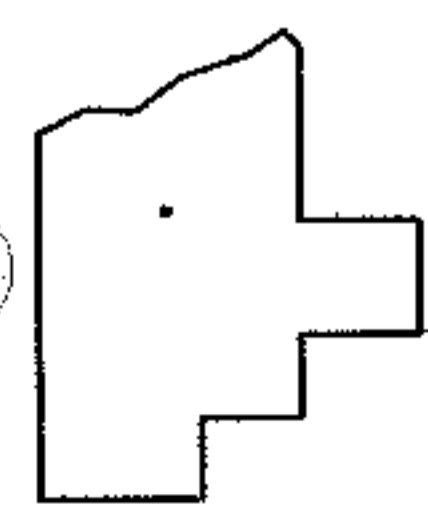
STARTING POINT: S/L 21 & 22 IN CLEVELAND ROAD HOMESITE

08-01631-C

FRONTAGE CORR
NO MAP CORR



0-017-A



SPLITS/DEEDS PROCESSED
LORAIN COUNTY TAX MAP DEPARTMENT
226 MIDDLE AVE. ELYRIA, OHIO

SURVEYED BY: N/A
CLOSURE: N/A
MAP PAGE(S): 07-00-017-B
APPROVED BY: DRH DATE: 4/10/2008
SCALE: 1" = 100 PRIOR INSTRUMENT: 20000691759