

PLASTER

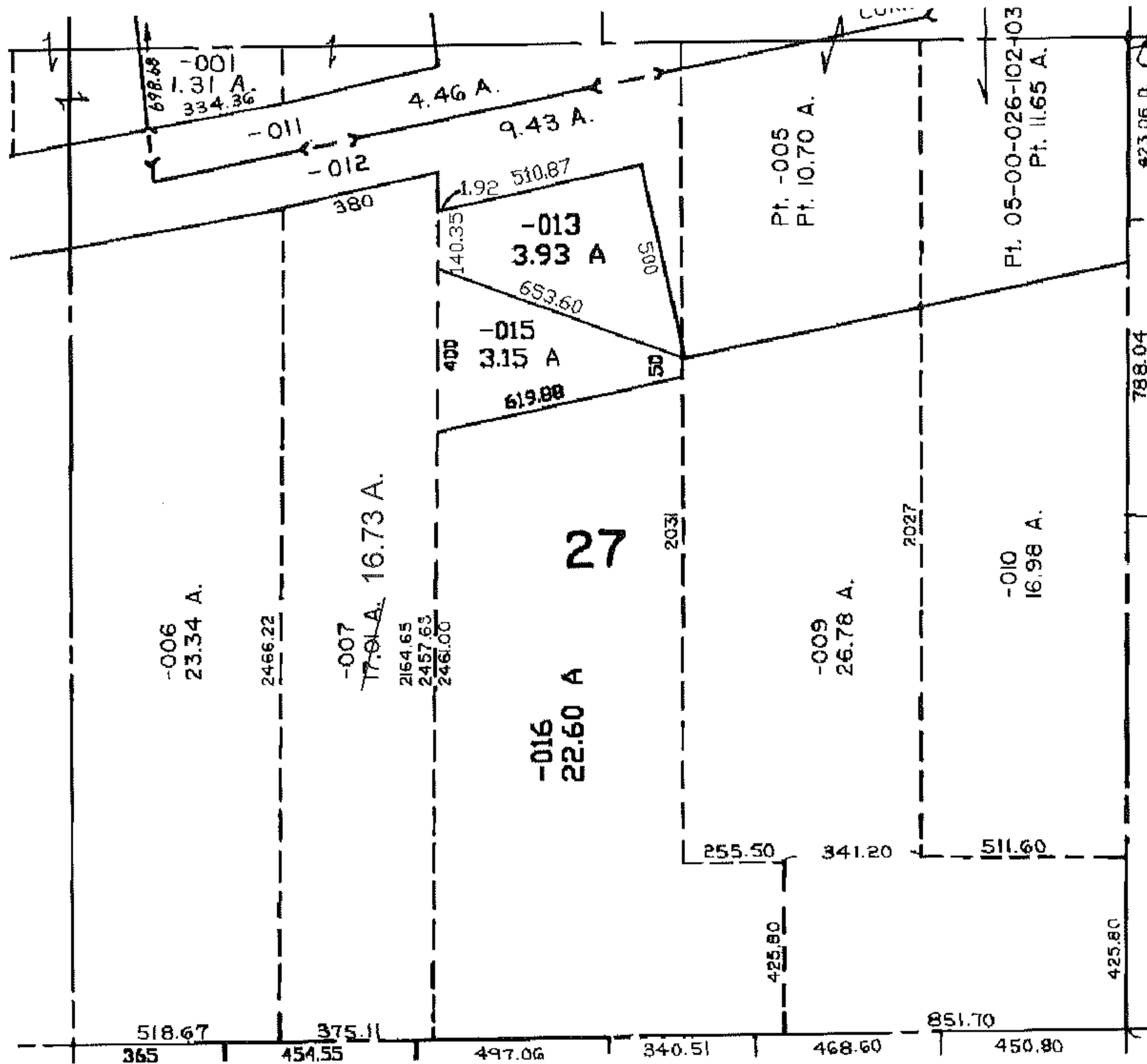
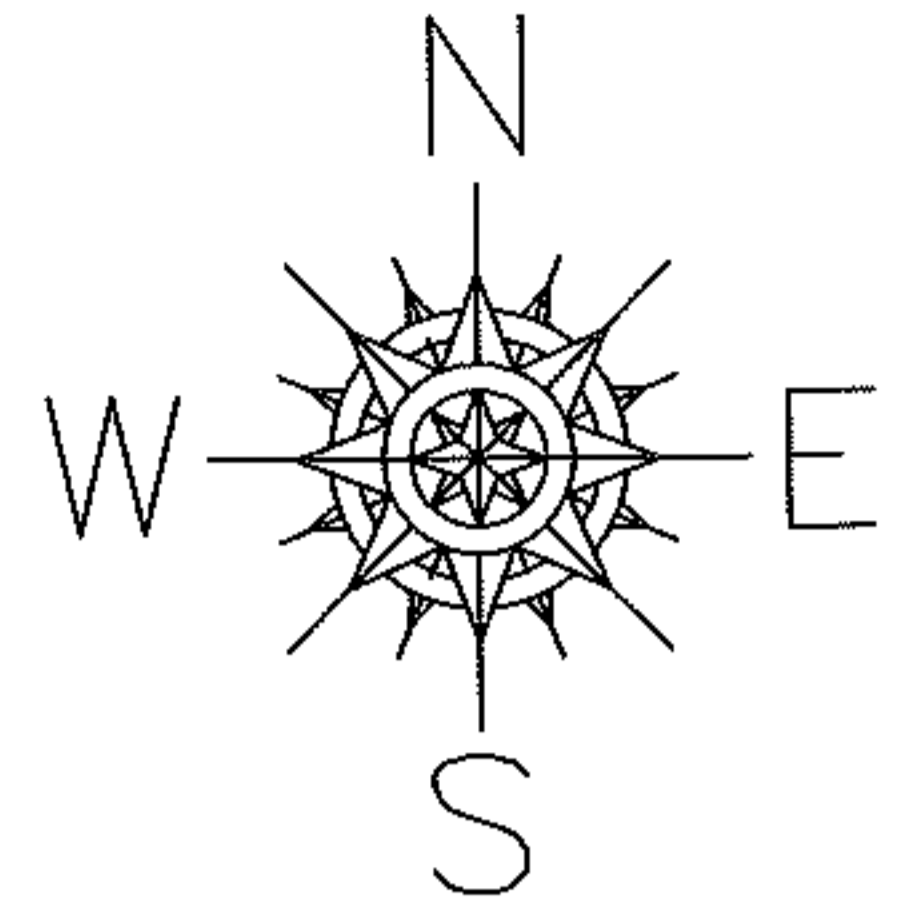
PARENT PARCEL: 05-00-027-000-007

CHILD PARCEL: --SAME--

STARTING POINT:

08-01628-C

AC. CORR. PER DEED



SPLITS/DEEDS PROCESSED

LORAIN COUNTY TAX MAP DEPARTMENT
226 MIDDLE AVE. ELYRIA, OHIO

SURVEYED BY: N/A

CLOSURE: N/A

MAP PAGE(S): 5-F

APPROVED BY: DRH DATE: 8/25/2008

SCALE: NOT TO SCALE PRIOR INSTRUMENT: 20070214336