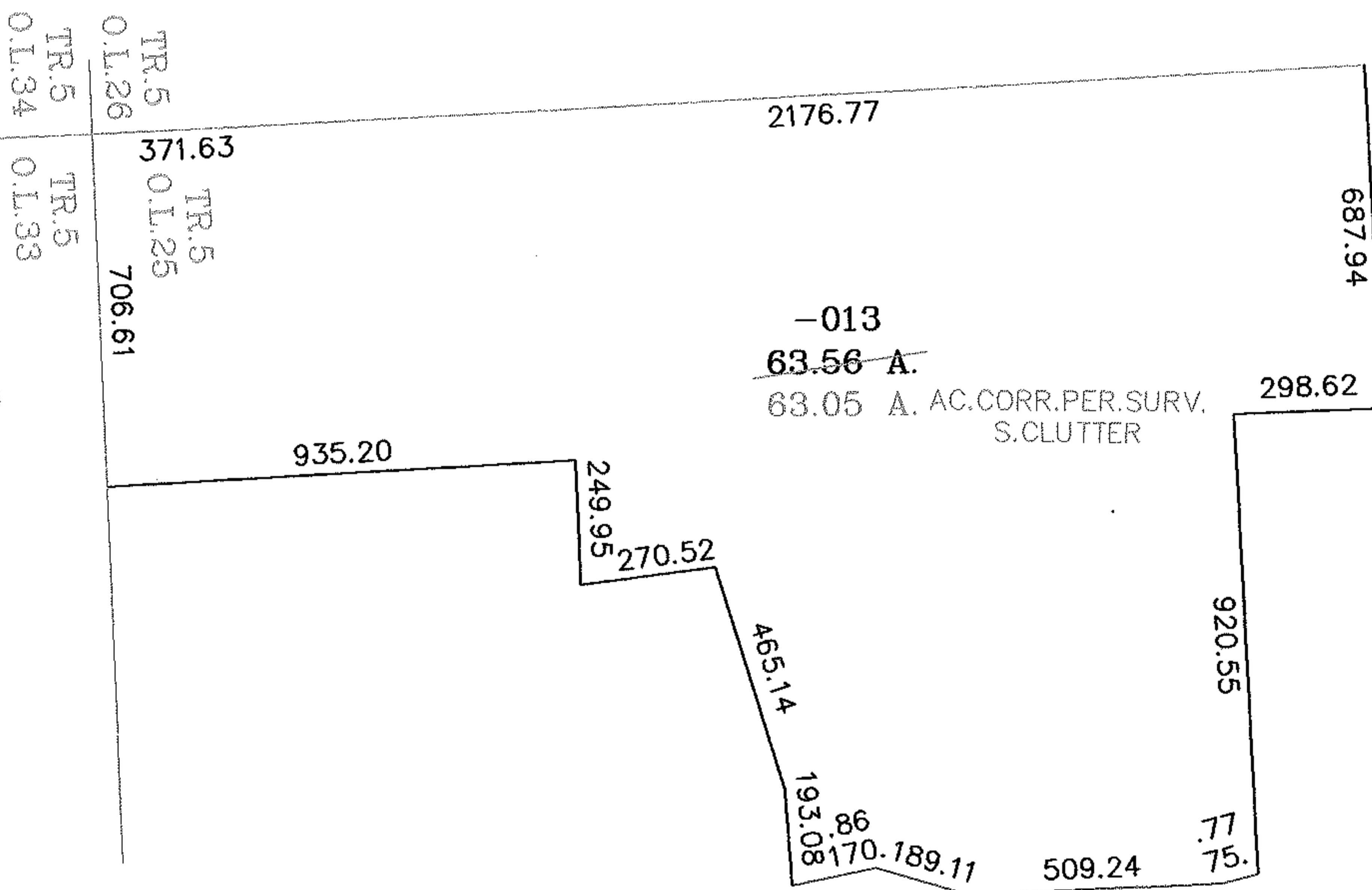
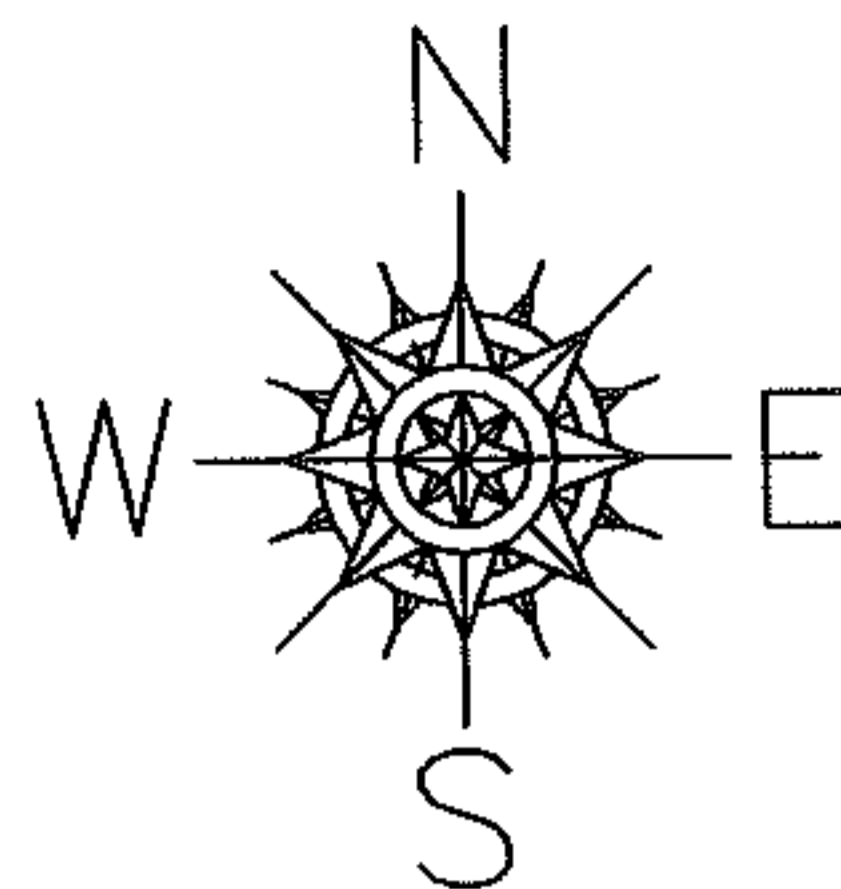


PARENT PARCEL: 21-05-025-000-013

CHILD PARCEL:

STARTING POINT: NORTHWEST CORNER OF TR.5 O.L.25

08-01627-C



NEW LONDON-LAFAYETTE RD.(S.R.162)



SPLITS/DEEDS PROCESSED
LORAIN COUNTY TAX MAP DEPARTMENT
 226 MIDDLE AVE. ELYRIA, OHIO

SURVEYED BY: STEVEN W. CLUTTER
 CLOSURE: .00:10.000
 MAP PAGE(S): 21-05-025-B
 APPROVED BY: RRM DATE: 4/3/08
 SCALE: 1" = 400 PRIOR INSTRUMENT: DV 951/968