

RASTER

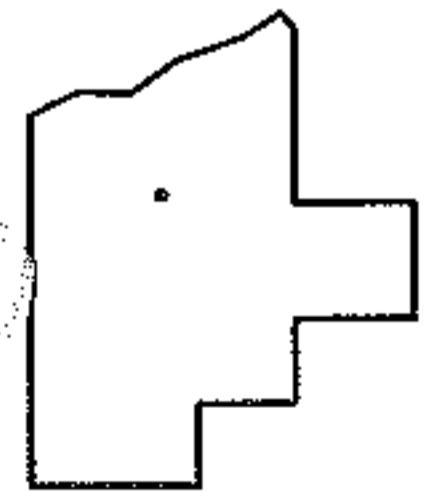
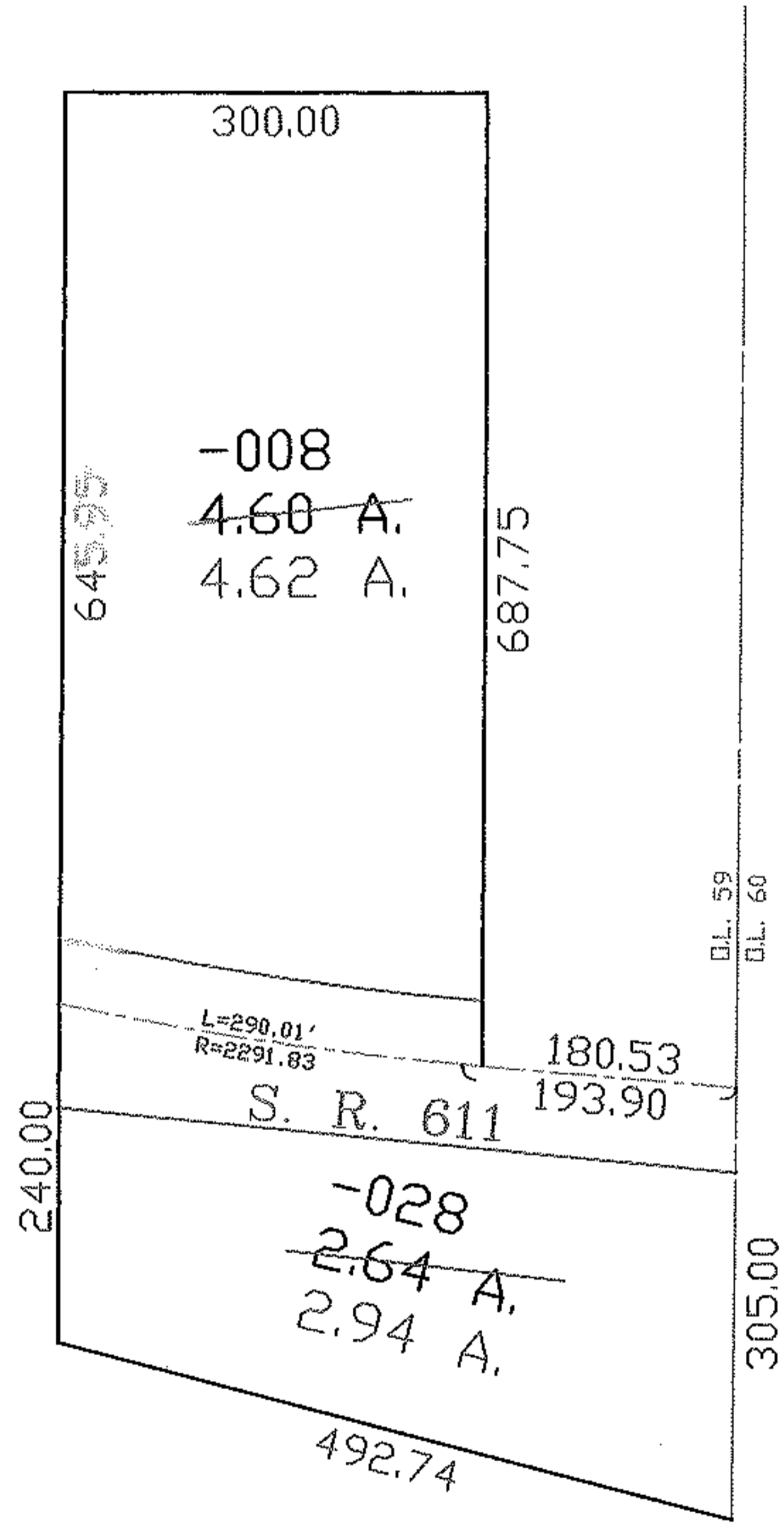
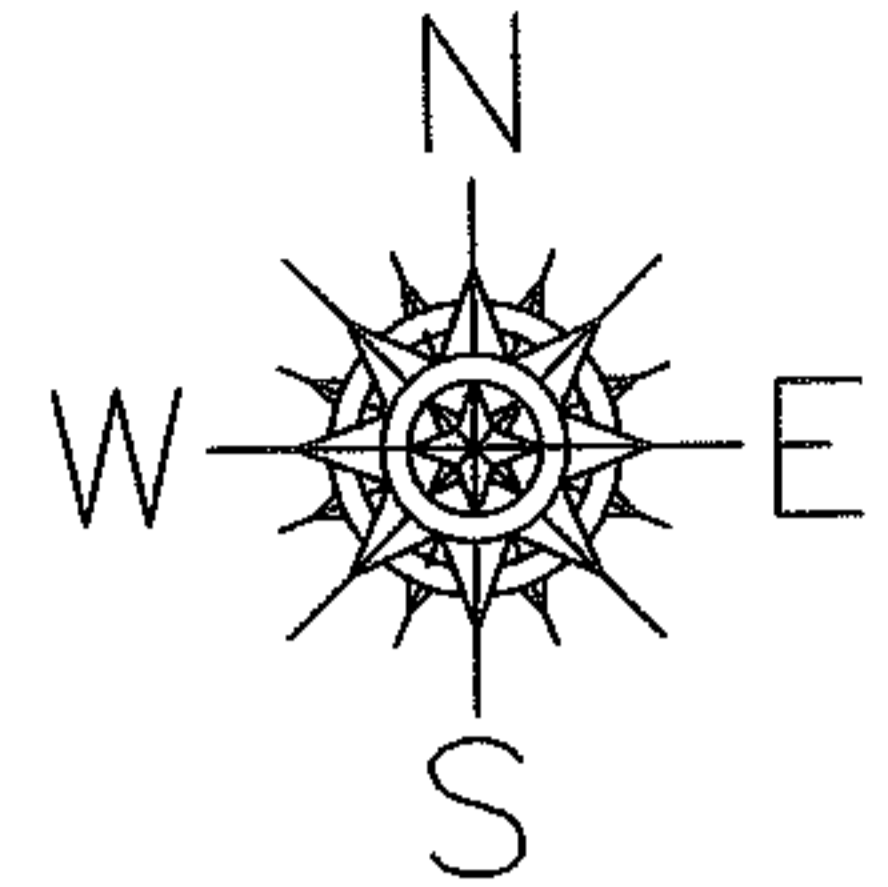
PARENT PARCEL: 03-00-059-000-008, -028

08-01620-C

CHILD PARCEL: --SAME--

STARTING POINT: INT CL 611 AND E LINE OF O.L. 59

AC. CORR
PER SURVEY
CHRISTOPHER M HIRZEL



SPLITS/DEEDS PROCESSED
LORAIN COUNTY TAX MAP DEPARTMENT
226 MIDDLE AVE. ELYRIA, OHIO

SURVEYED BY: CHRISTOPHER M. HIRZEL
CLOSURE: 1:10.000
MAP PAGE(S): 03-00-059-B
APPROVED BY: DRH DATE: 3/19/2008
SCALE: 1" = 200' PRIOR INSTRUMENT: 19980517763