

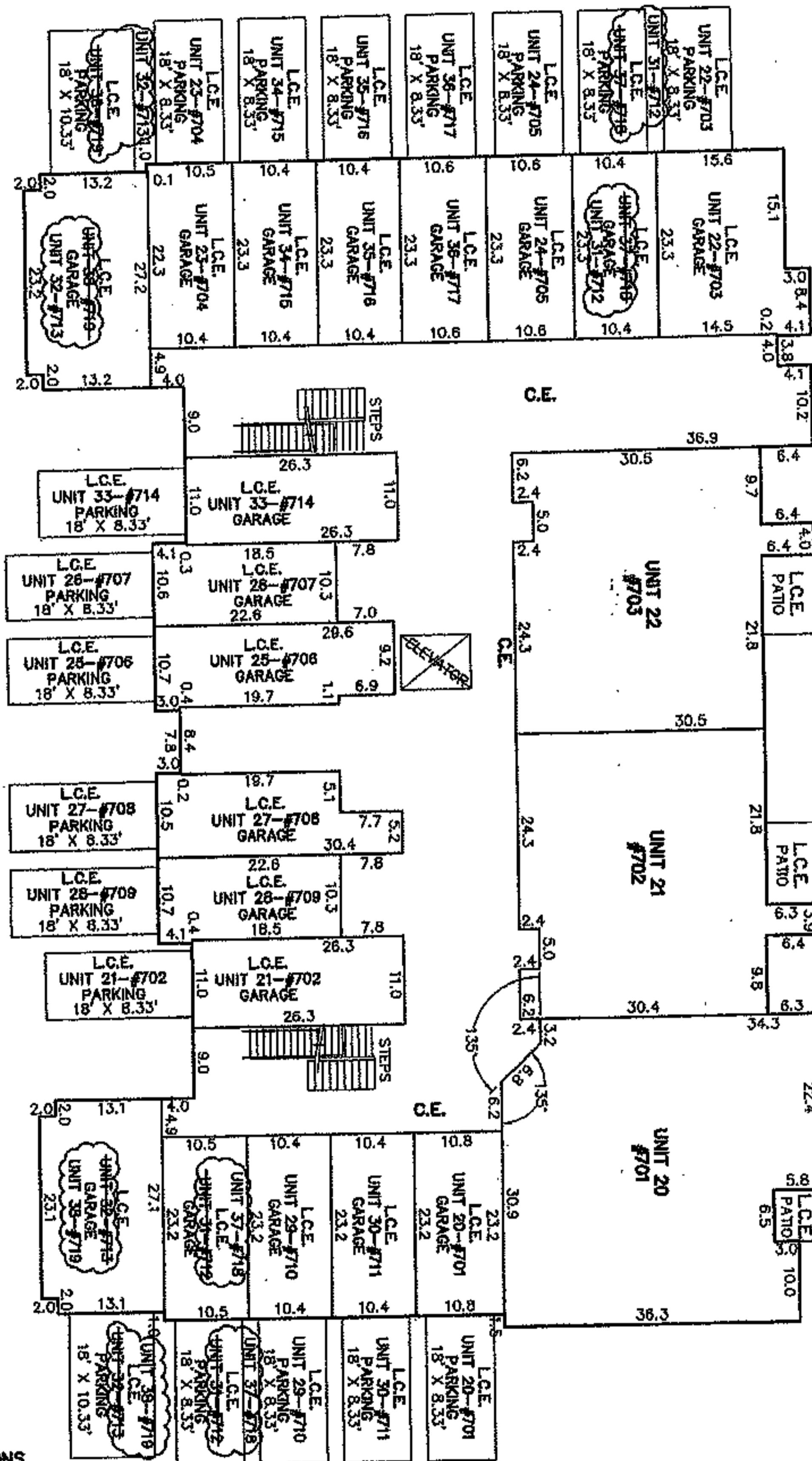
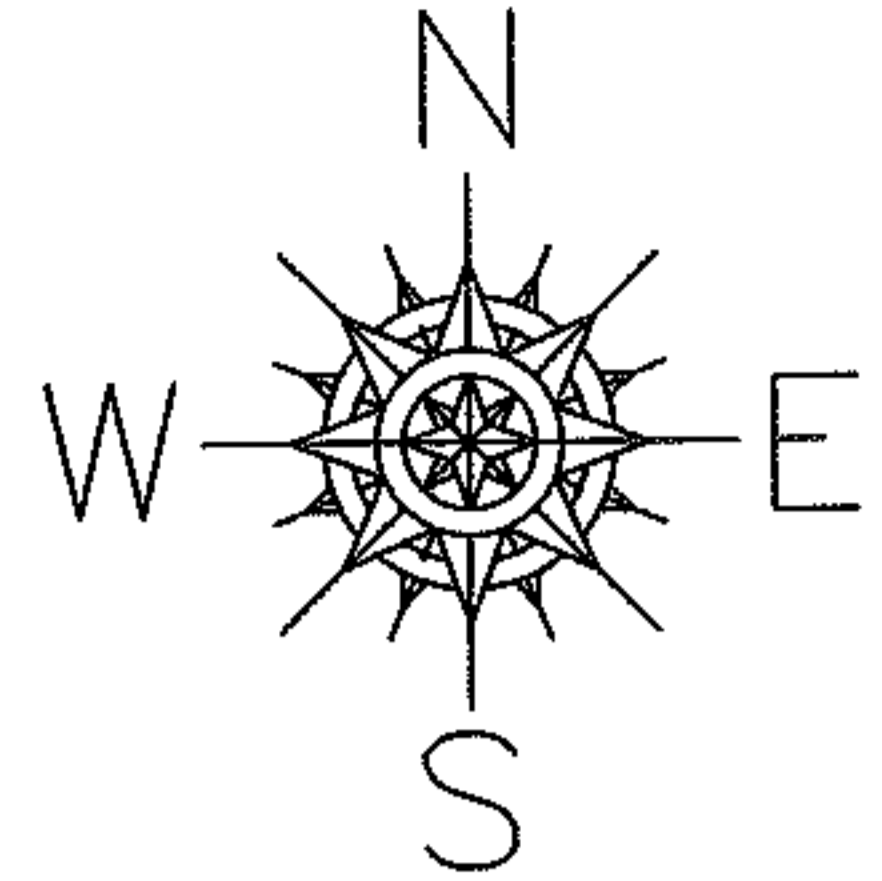
PARENT PARCEL: CERTIFICATE OF CORR. AQUA MARINE CONDO. NO.1 PH. 1

CHILD PARCEL: XX-XX-XXX-XXX-XXX

STARTING POINT: XXXXXX

08-01613-X

**AQUA MARINE CONDOMINIUM NO. 1 PHASE 1  
CERTIFICATE OF CORRECTION CHANGES**  
BUILDING #7 GARAGE & PARKING SPACE NUMBERING CORRECTION  
TO VOLUME 91 OF PLATS PAGE 14 OF LORAIN COUNTY RECORDS



**DEFINITIONS**  
UNIT # (UNIT NUMBER)  
#818 (UNIT ADDRESS)  
C.E. (COMMON ELEMENT)  
L.C.E. (LIMITED COMMON ELEMENT)



PG. 3 OF 4

PRIOR INSTRUMENT: PV. 91 PG. 12-16

**SPLITS/DEEDS PROCESSED**

**LORAIN COUNTY TAX MAP DEPARTMENT**  
226 MIDDLE AVE. ELYRIA, OHIO

SURVEYED BY: JAMES T. SAYLER

CLOSURE: XXXXXX

MAP PAGE(S): 04-00-006-F

APPROVED BY: TJS DATE: 3/10/08

SCALE: 1" = 100'