

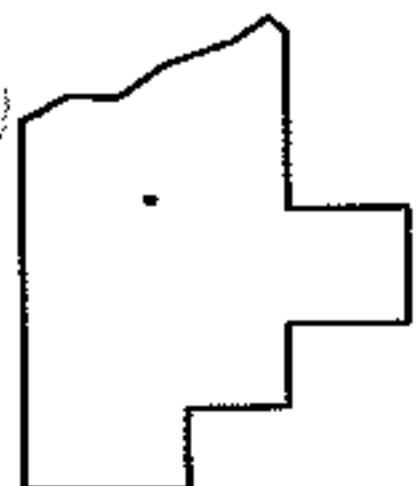
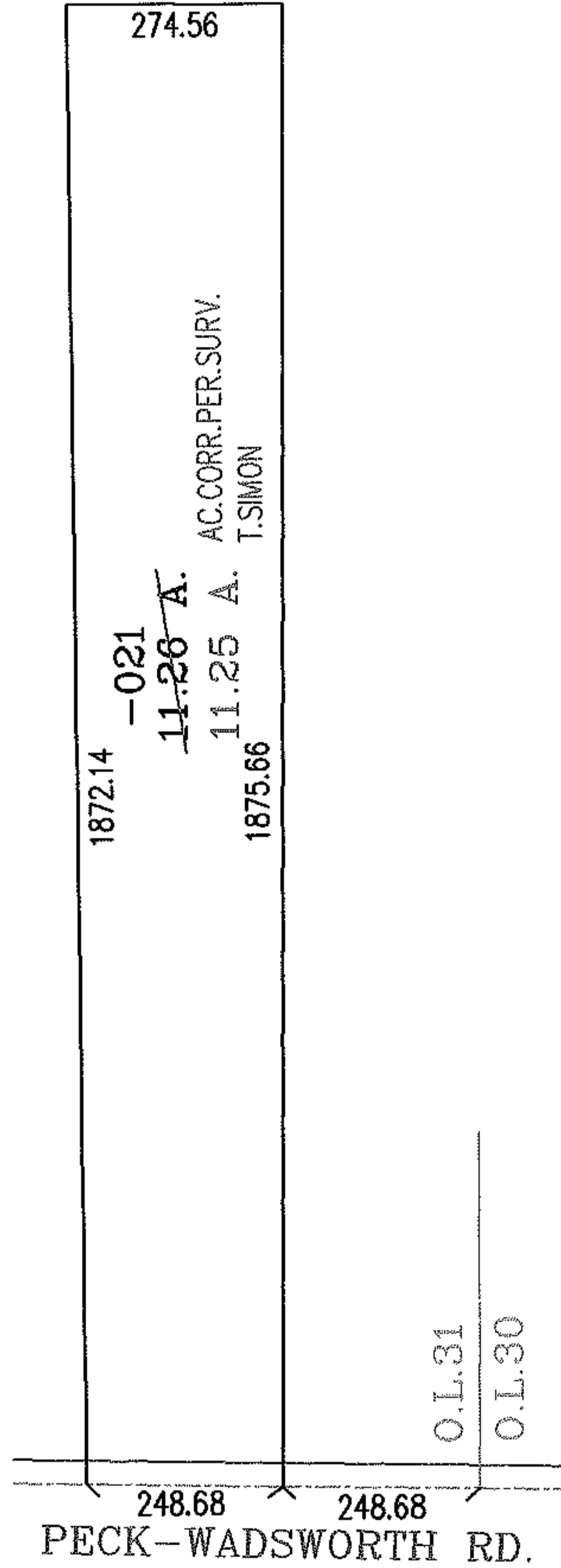
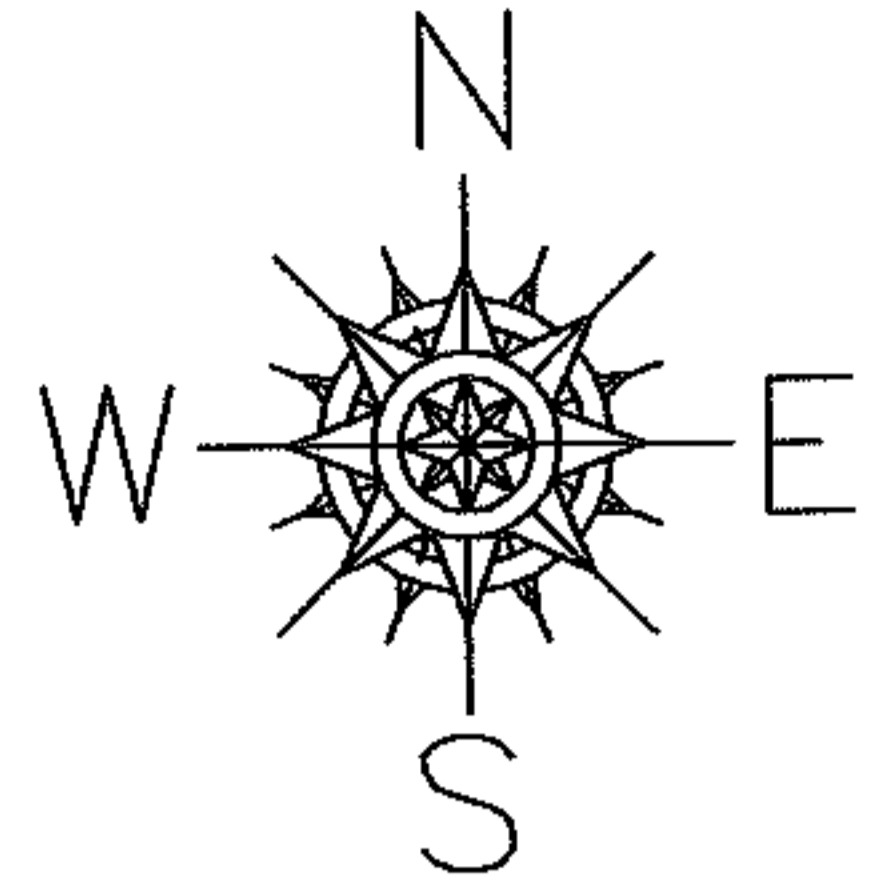
RASTER

PARENT PARCEL: 18-00-031-000-021

CHILD PARCEL:

STARTING POINT: SOUTHEAST CORNER OF O.L.31

08-01611-C



SPLITS/DEEDS PROCESSED
LORAIN COUNTY TAX MAP DEPARTMENT
 226 MIDDLE AVE. ELYRIA, OHIO

SURVEYED BY: THOMAS M. SNEZEK

CLOSURE: .00:10.00

MAP PAGE(S): 18-B

APPROVED BY: RRM DATE: 3/3/08

SCALE: 1" = 300 PRIOR INSTRUMENT: 20070215581