

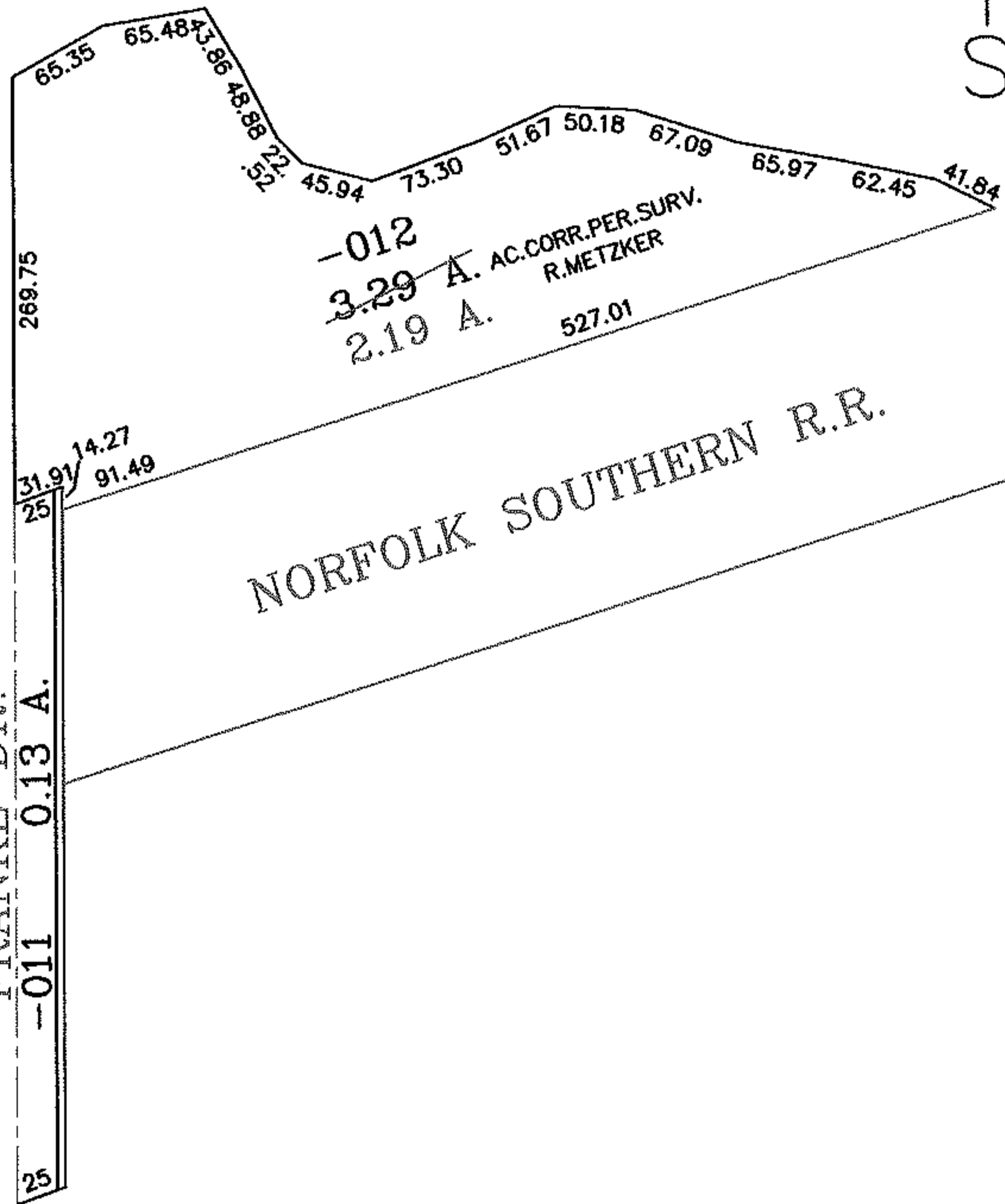
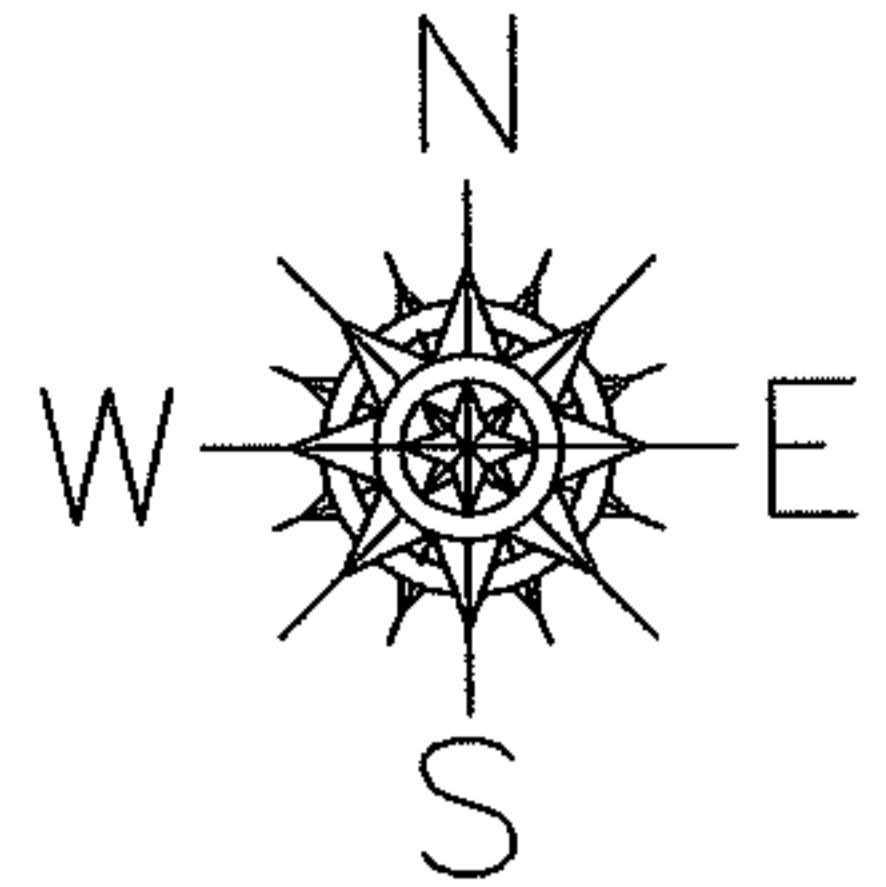
PARENT PARCEL: 02-02-021-101-011,-012

CHILD PARCEL:

STARTING POINT: SOUTHEAST CORNER OF S/L 16 IN GRANDVIEW SUB. VOL.11 PGS. 2-3

08-01604-C

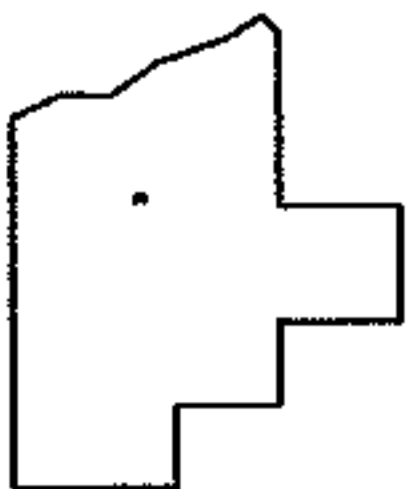
2 OF 2



LAKE RD.

NEW MAP

02-02-021-101-011
NEEDS TO BE MOVED DOWN



SPLITS/DEEDS PROCESSED

LORAIN COUNTY TAX MAP DEPARTMENT
226 MIDDLE AVE. ELYRIA, OHIO

SURVEYED BY: RICHARD METZKER
CLOSURE: .00:10.000
MAP PAGE(S): 02-02-021-A
APPROVED BY: RRM DATE: 2/8/08
SCALE: 1" = 150' PRIOR INSTRUMENT: OR 159/228