

RASTER

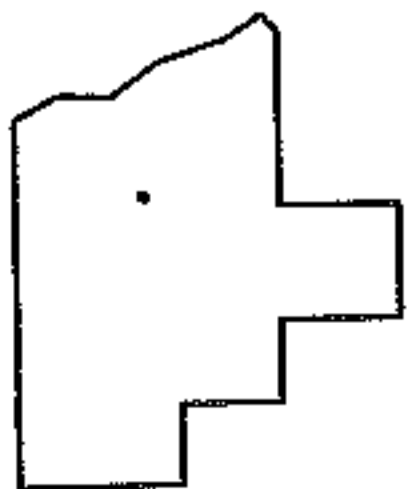
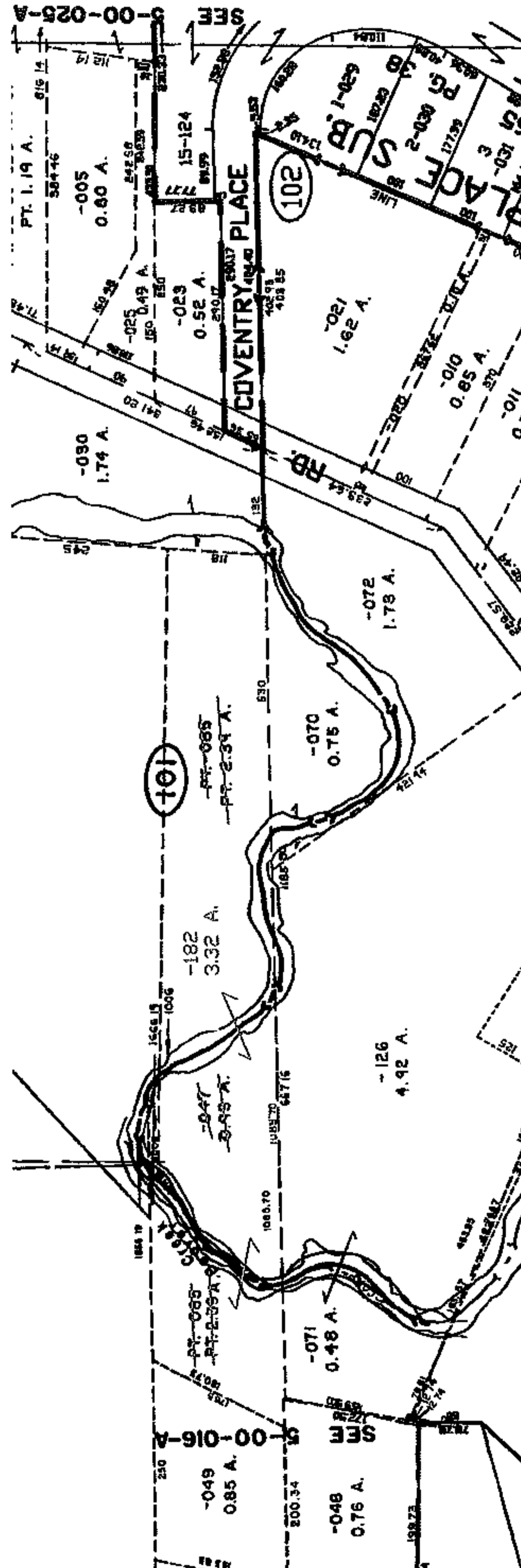
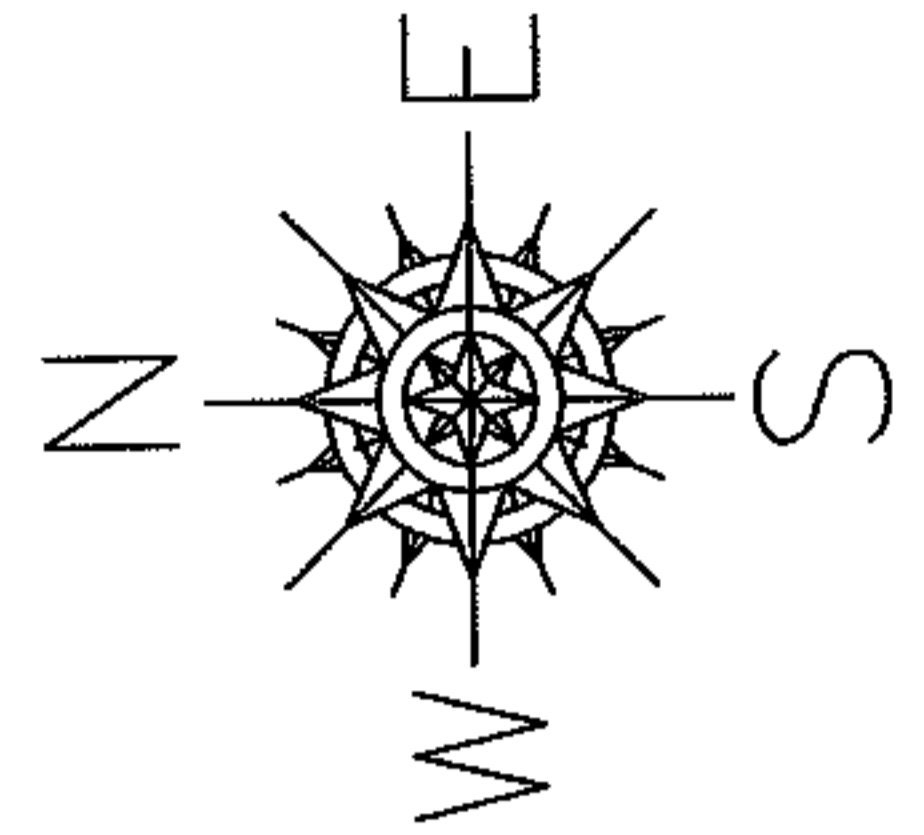
PARENT PARCEL: 05-00-016-101-085 & -047

CHILD PARCEL: 05-00-016-101-182

STARTING POINT:

08-01603-D

COMBINATION TO CORRECT  
CLERICAL ERROR IN MAP DEPT



SPLITS/DEEDS PROCESSED

LORAIN COUNTY TAX MAP DEPARTMENT  
226 MIDDLE AVE. ELYRIA, OHIO

SURVEYED BY: N/A

CLOSURE: N/A

MAP PAGE(S): 05-00-016-A & B

APPROVED BY: DRH DATE: 2/15/2008

SCALE: 1" = 100 PRIOR INSTRUMENT: 20040979216