

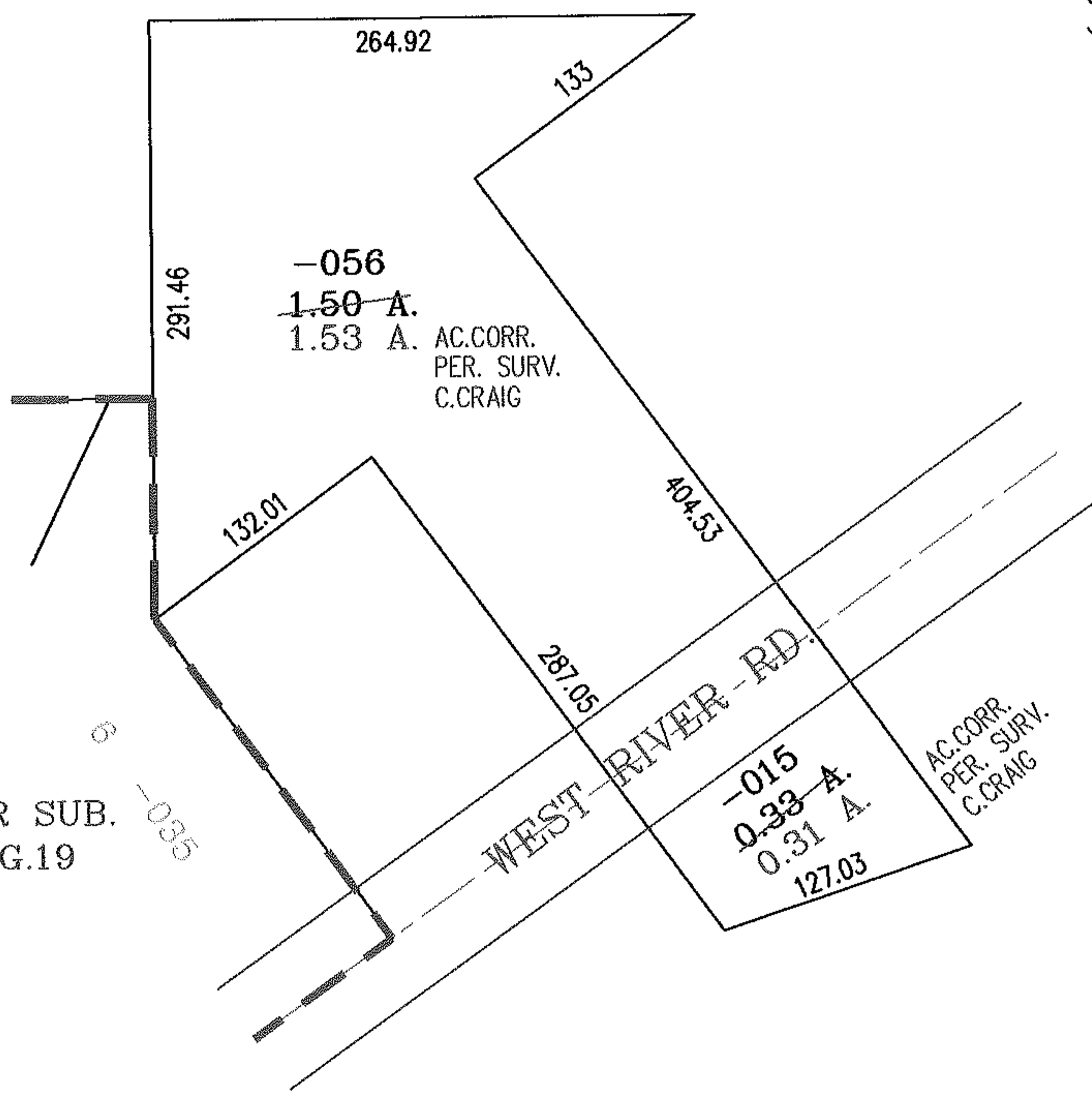
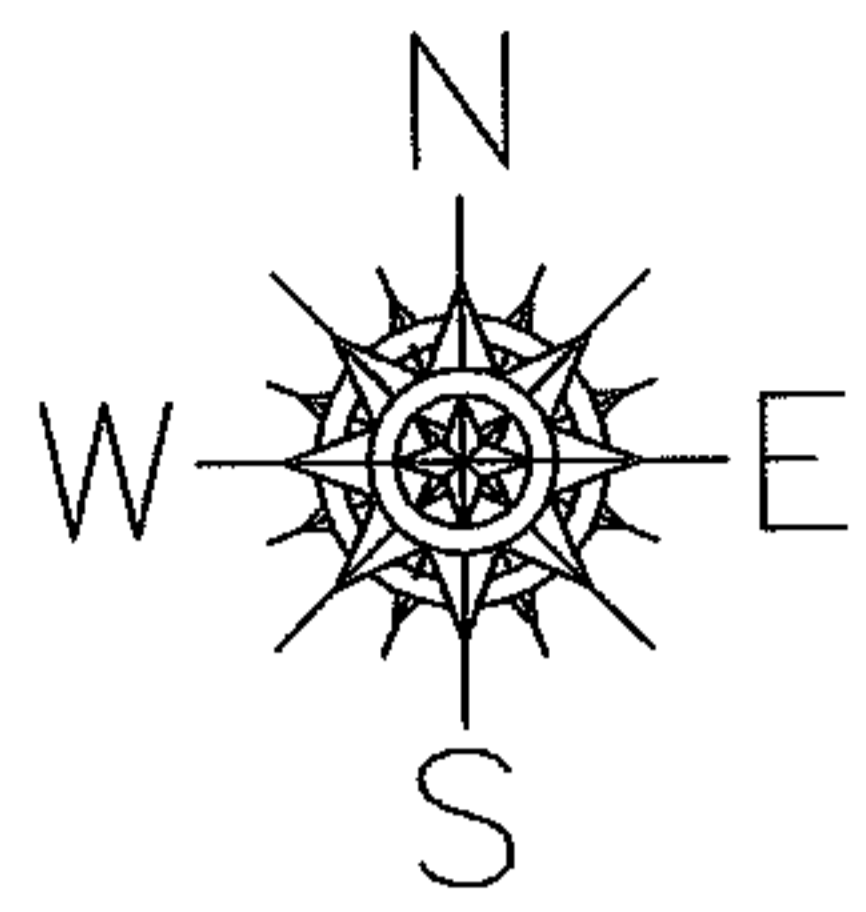
RASTER

PARENT PARCEL: 12-00-040-101-056, 12-00-040-102-015

08-01601-X

CHILD PARCEL:

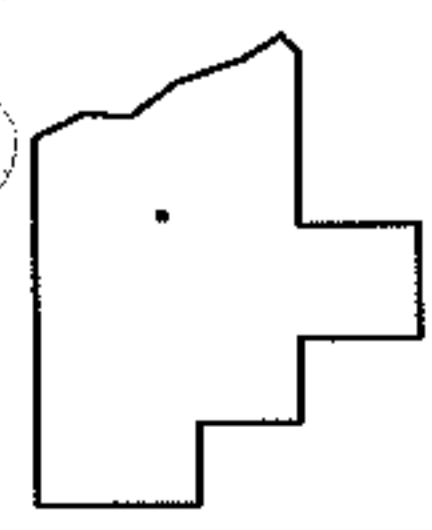
STARTING POINT: A CORNER OF S/L 6 IN WEST RIVER SUB. VOL.19 PG.19



-056
~~1.50~~ A.
1.53 A. AC.CORR.
PER. SURV.
C.CRAIG

-015
~~0.33~~ A.
0.31 A. AC.CORR.
PER. SURV.
C.CRAIG

WEST RIVER SUB.
VOL.19 PG.19



SPLITS/DEEDS PROCESSED

LORAIN COUNTY TAX MAP DEPARTMENT
226 MIDDLE AVE. ELYRIA, OHIO

SURVEYED BY: CHAD E. CRAIG
CLOSURE: .00:10,000
MAP PAGE(S): 12-00-040-B
APPROVED BY: RRM DATE: 2/7/08
SCALE: 1" = 100 PRIOR INSTRUMENT: 20070206606