

RASTER

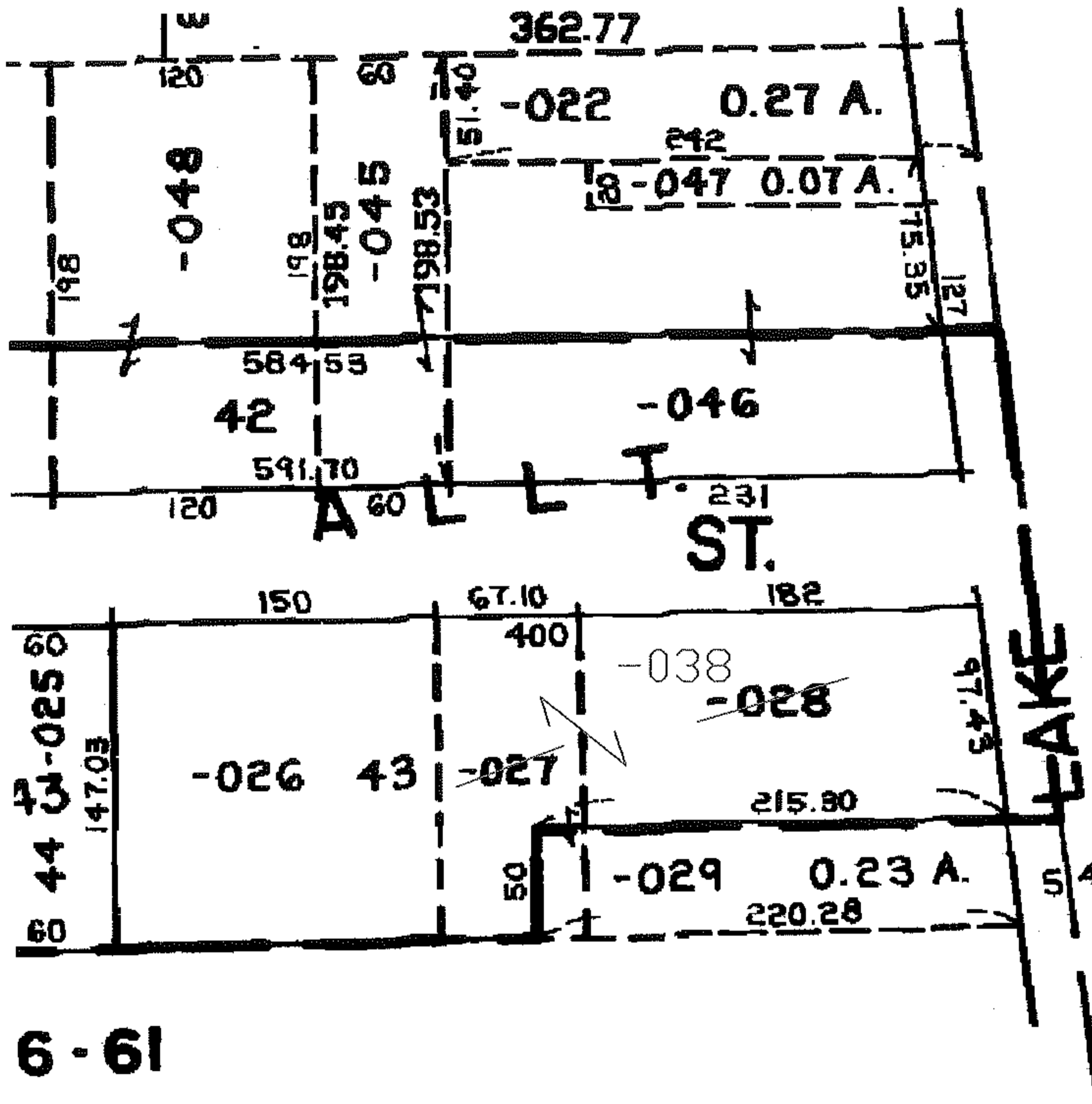
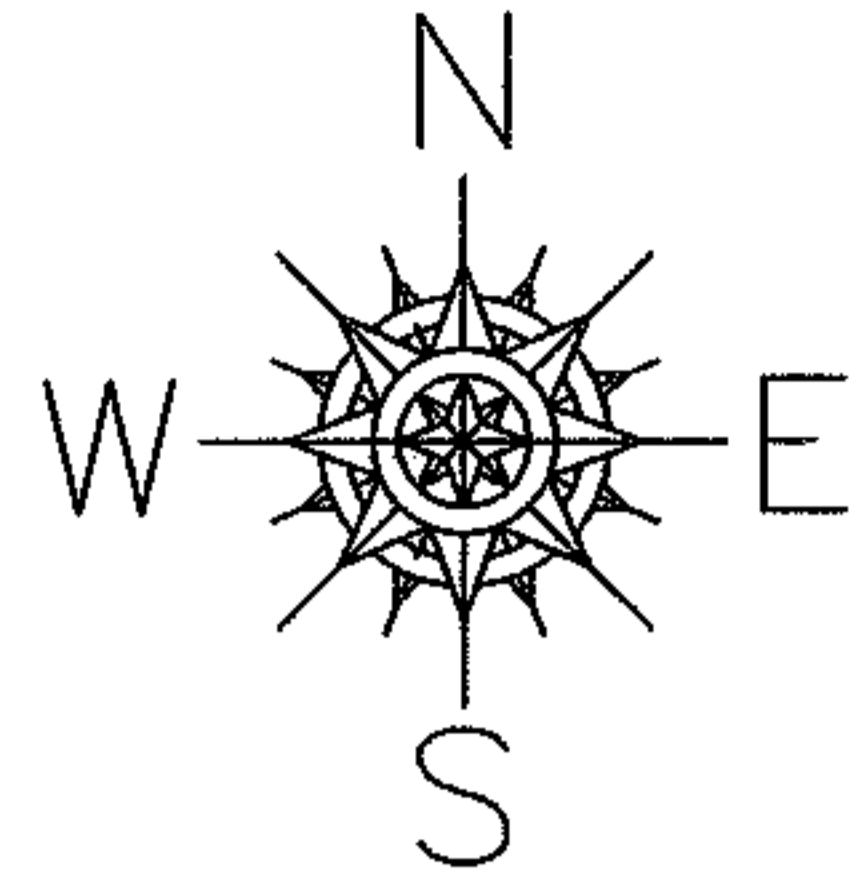
PARENT PARCEL: 06-24-037-104-027, -028

CHILD PARCEL: 06-24-037-104-038

STARTING POINT: SE CORNER OF ORCHARD GROVE ALLOT (INT WITH LAKE AVE)

08-01599-D

COMB PER DEED



6-61

SPLITS/DEEDS PROCESSED

LORAIN COUNTY TAX MAP DEPARTMENT
226 MIDDLE AVE. ELYRIA, OHIO

SURVEYED BY: N/A

CLOSURE: N/A

MAP PAGE(S): 06-42

APPROVED BY: DRH DATE: 2/5/2008

SCALE: NOT TO SCALE PRIOR INSTRUMENT: 20030886568