

RASTER

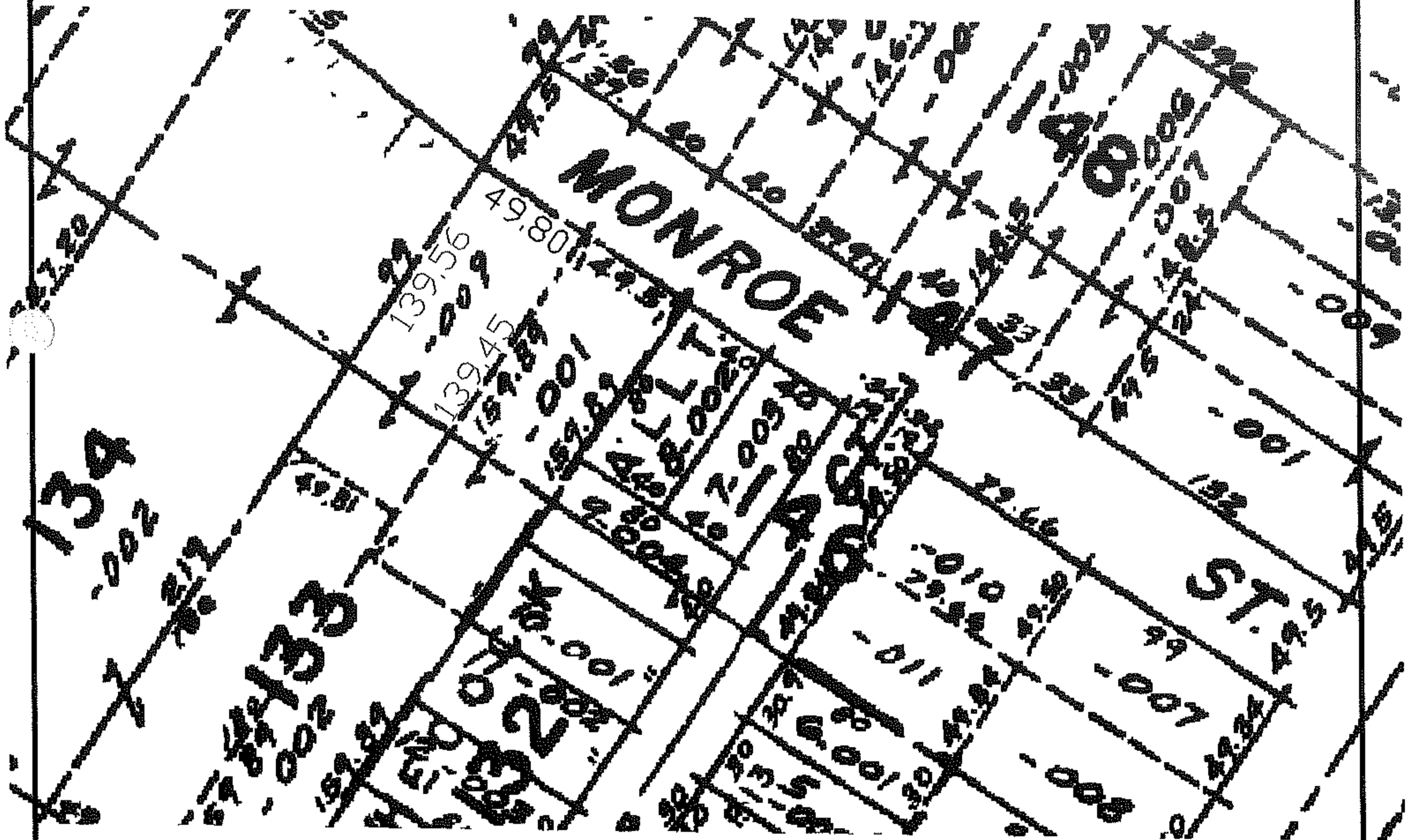
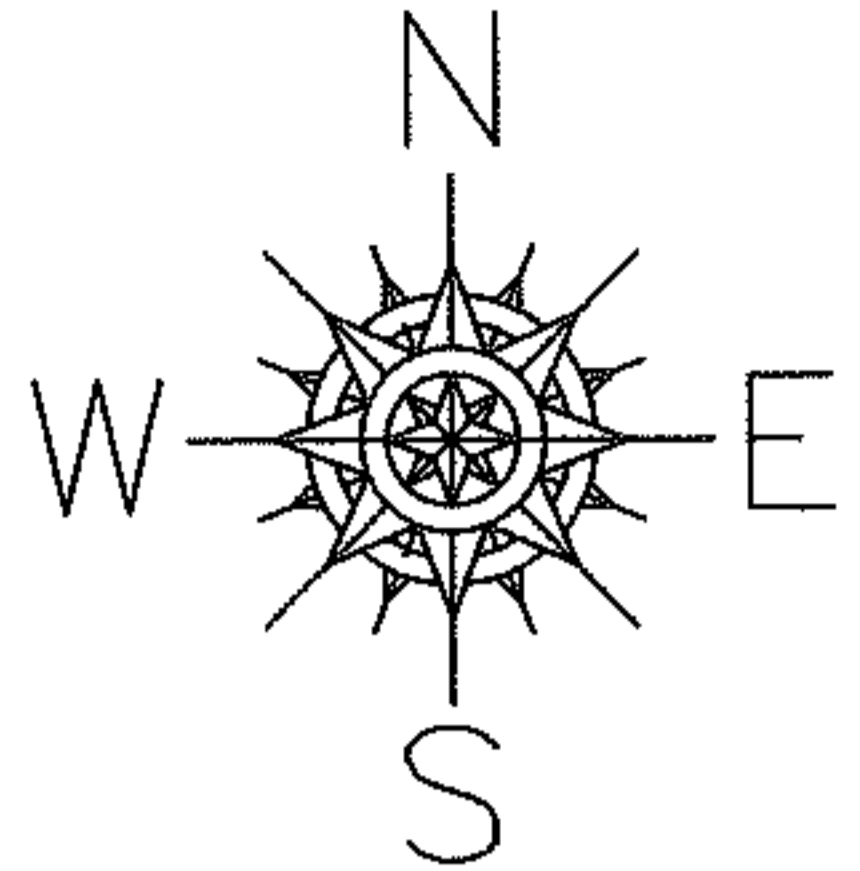
PARENT PARCEL: 06-24-146-000-009

CHILD PARCEL: --SAME--

STARTING POINT: INT NW LINE OF FLORAL COURT AND NE LINE OF LODI ST

08-01591-C

DEPTH CORR PER DEEDS



SPLITS/DEEDS PROCESSED

LORAIN COUNTY TAX MAP DEPARTMENT
226 MIDDLE AVE. ELYRIA, OHIO

SURVEYED BY: N/A
CLOSURE: N/A
MAP PAGE(S): 06-100
APPROVED BY: DRH DATE: 1/24/2008
SCALE: NOT TO SCALE PRIOR INSTRUMENT: OR 479/196