

RASTER

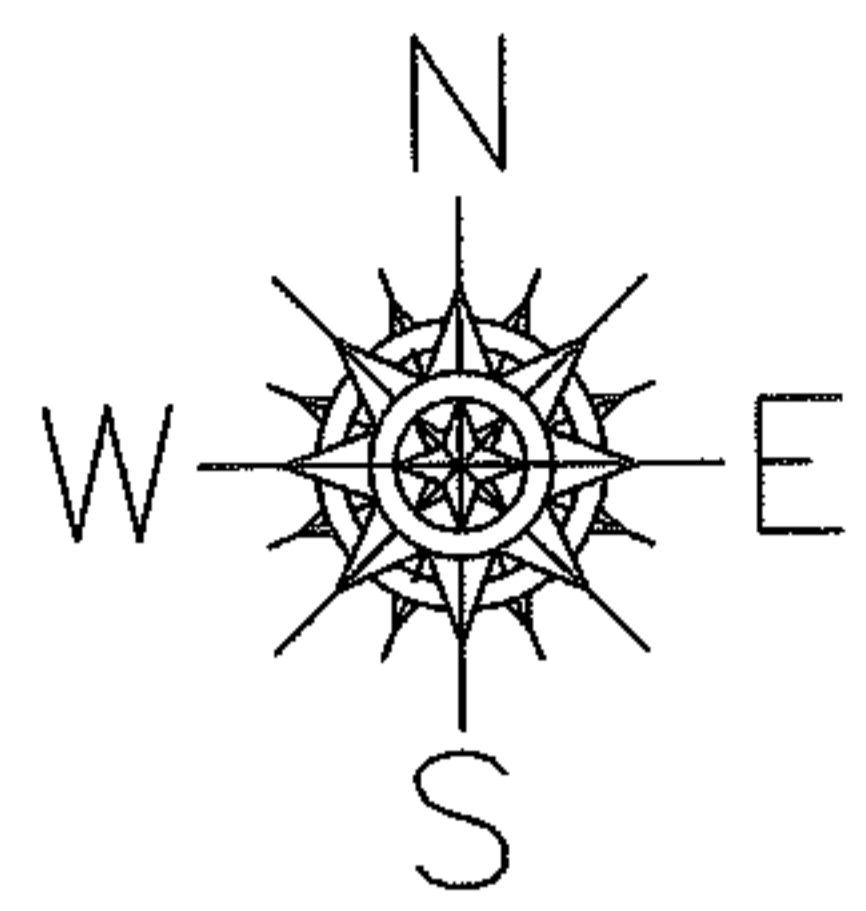
PARENT PARCEL: 11-00-009-102-023

08-01589-C

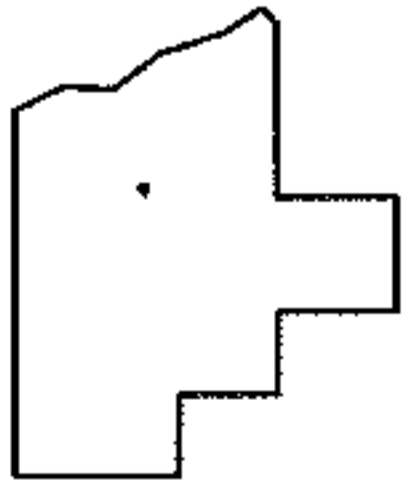
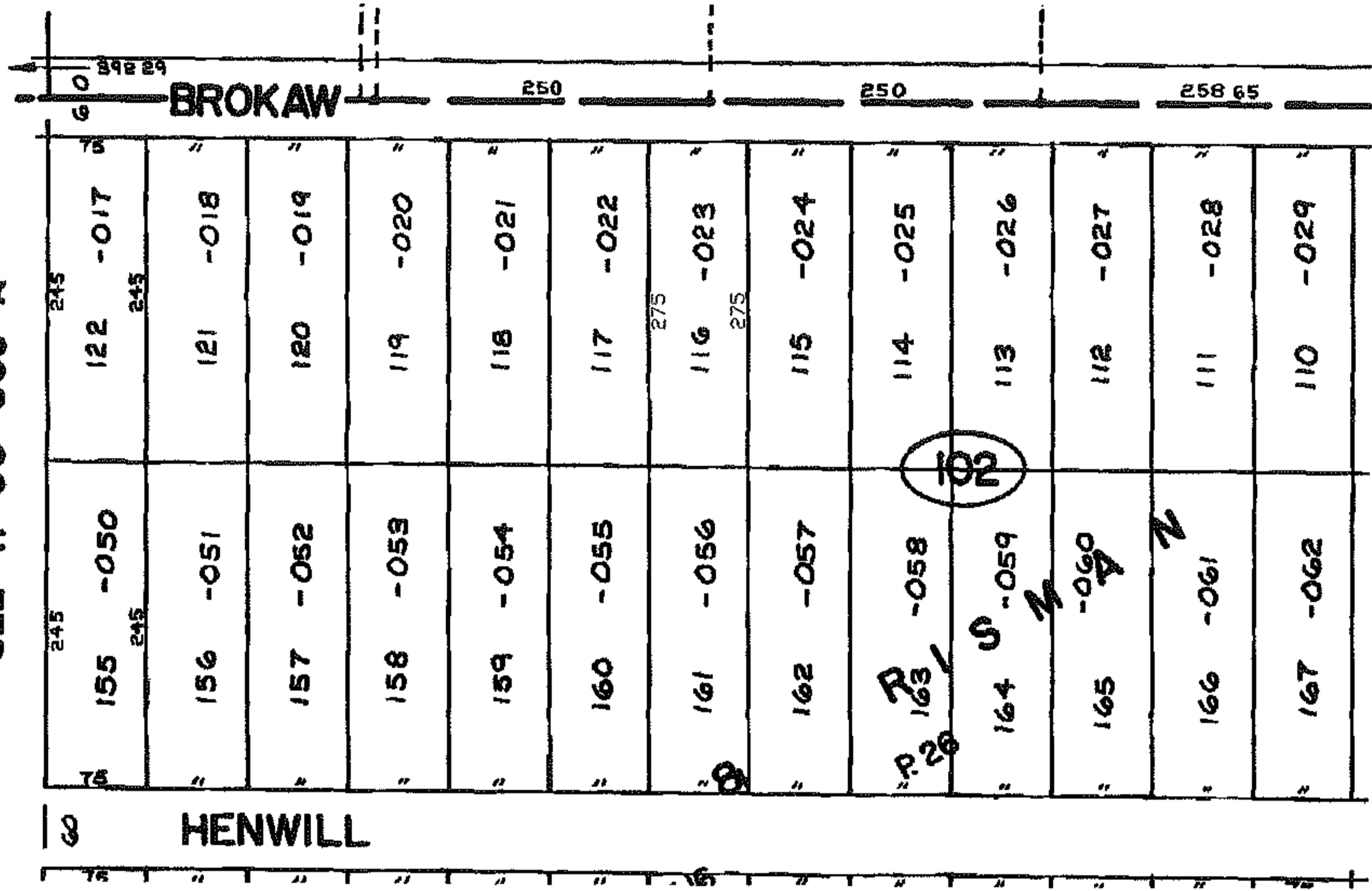
CHILD PARCEL: --SAME--

STARTING POINT: S/L 16 DROSD & HISMAN ALLOT

DEPTH CORR. PER PLAT



SEE 11-00-009-A



SPLITS/DEEDS PROCESSED

LORAIN COUNTY TAX MAP DEPARTMENT
226 MIDDLE AVE. ELYRIA, OHIO

SURVEYED BY: N/A
 CLOSURE: N/A
 MAP PAGE(S): 11-00-009-B
 APPROVED BY: DRH DATE: 1/8/2008
 SCALE: 1" = 100' PRIOR INSTRUMENT: 20070192362