

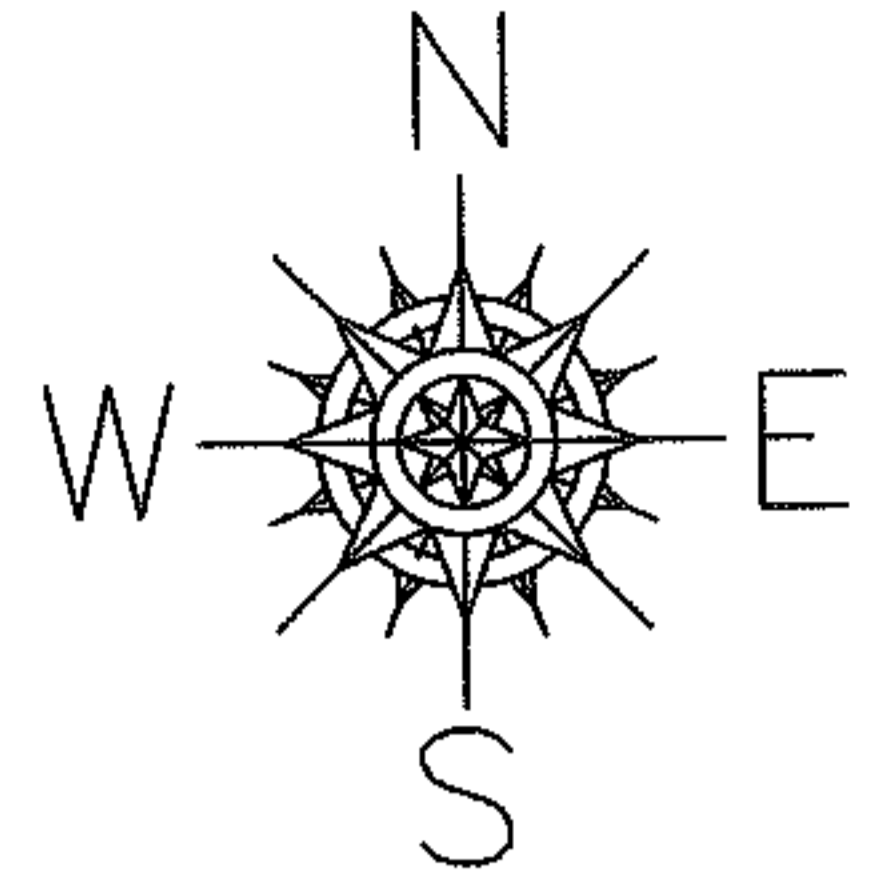
PARENT PARCEL: 03-00-107-101-007

07-01577-D

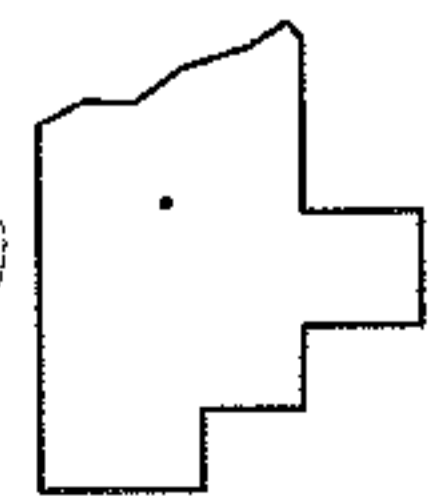
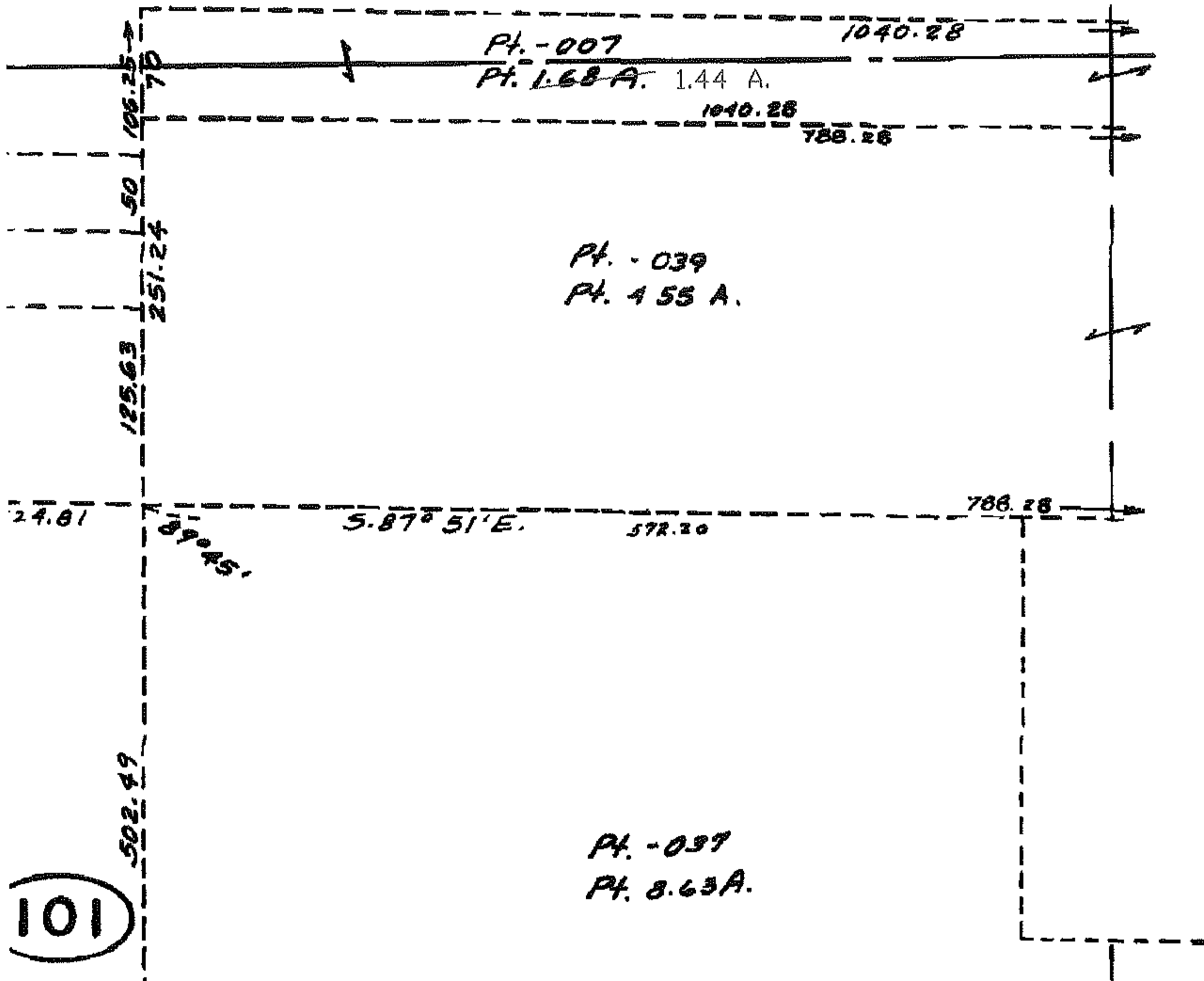
CHILD PARCEL: --SAME--

STARTING POINT:

AC. CORR.  
PER DEED



E 3-00-102-A



SPLITS/DEEDS PROCESSED

LORAIN COUNTY TAX MAP DEPARTMENT  
226 MIDDLE AVE. ELYRIA, OHIO

SURVEYED BY: N/A  
 CLOSURE: N/A  
 MAP PAGE(S): 03-00-107-A  
 APPROVED BY: DRH DATE: 12/10/2007  
 SCALE: NOT TO SCALE PRIOR INSTRUMENT: 624/153