

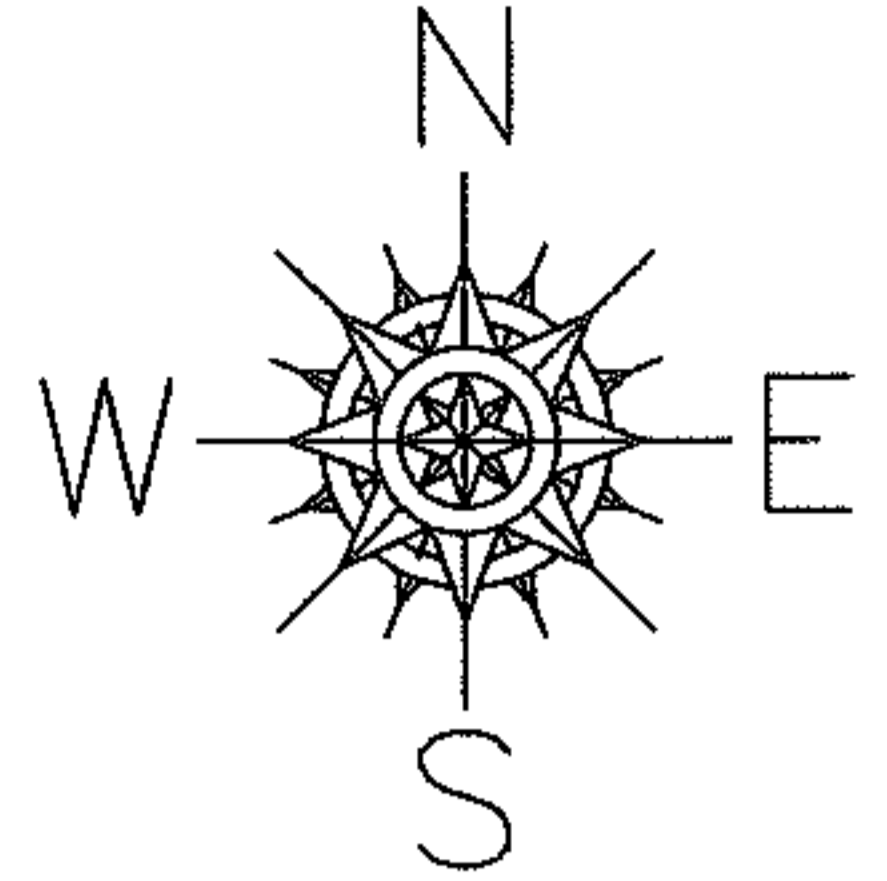
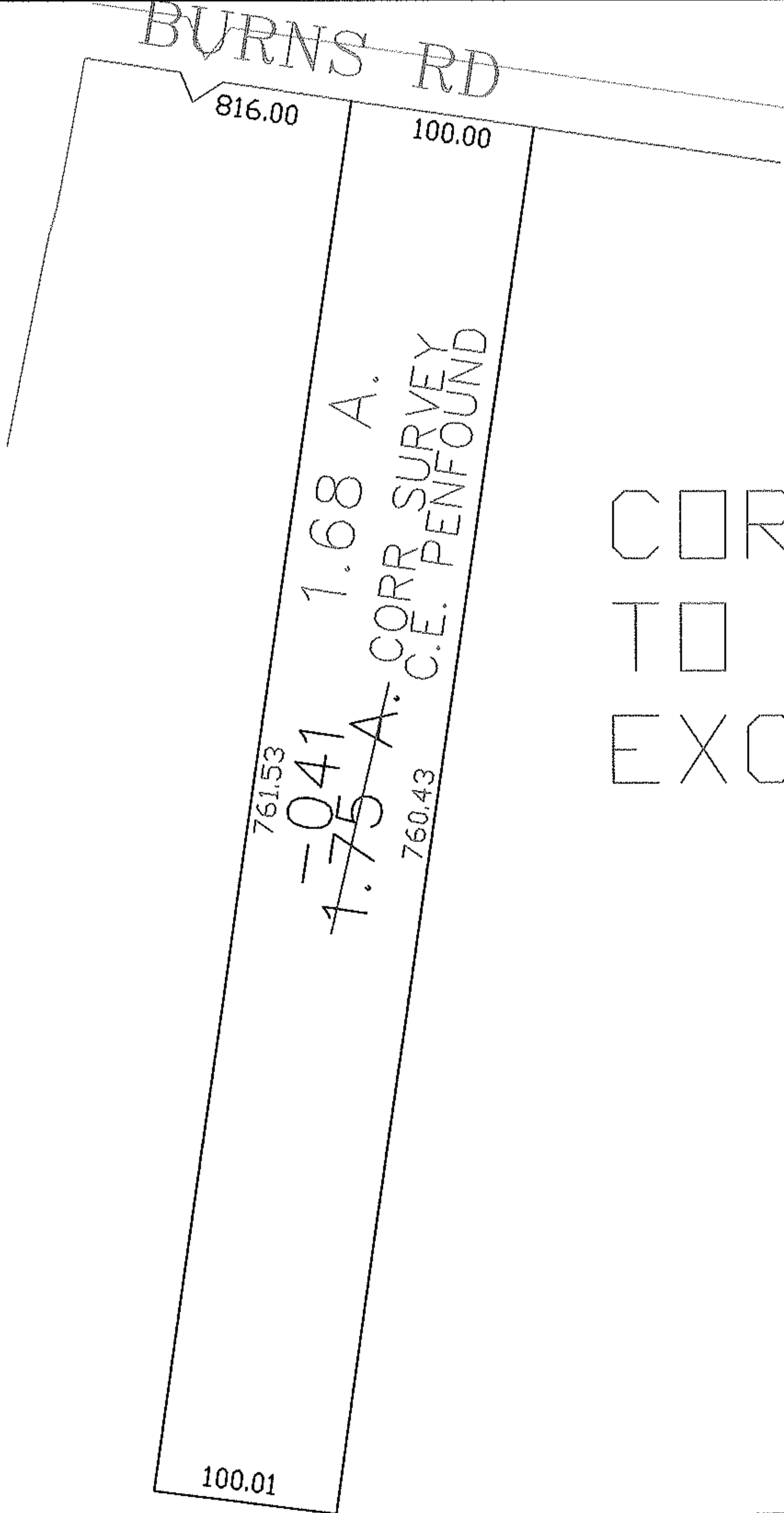
RASTER

PARENT PARCEL: 07-00-044-102-041

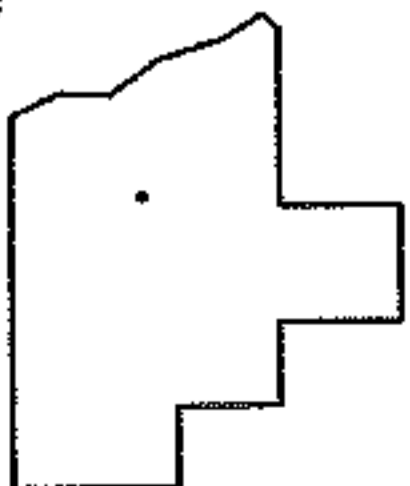
CHILD PARCEL: SAME

STARTING POINT: SIDELINE OF BURNS RD & RIDGEVILLE TWP LINE

07-01560-C



CORR
TO INC
EXCEPTION



SPLITS/DEEDS PROCESSED

LORAIN COUNTY TAX MAP DEPARTMENT
226 MIDDLE AVE. ELYRIA, OHIO

SURVEYED BY: C.E. PENFOUND

CLOSURE: 0.00 : 10.000

MAP PAGE(S): 07-00-044-B

APPROVED BY: DRH DATE: 1/24/2008

SCALE: 1" = 100 PRIOR INSTRUMENT: DV 546/20