

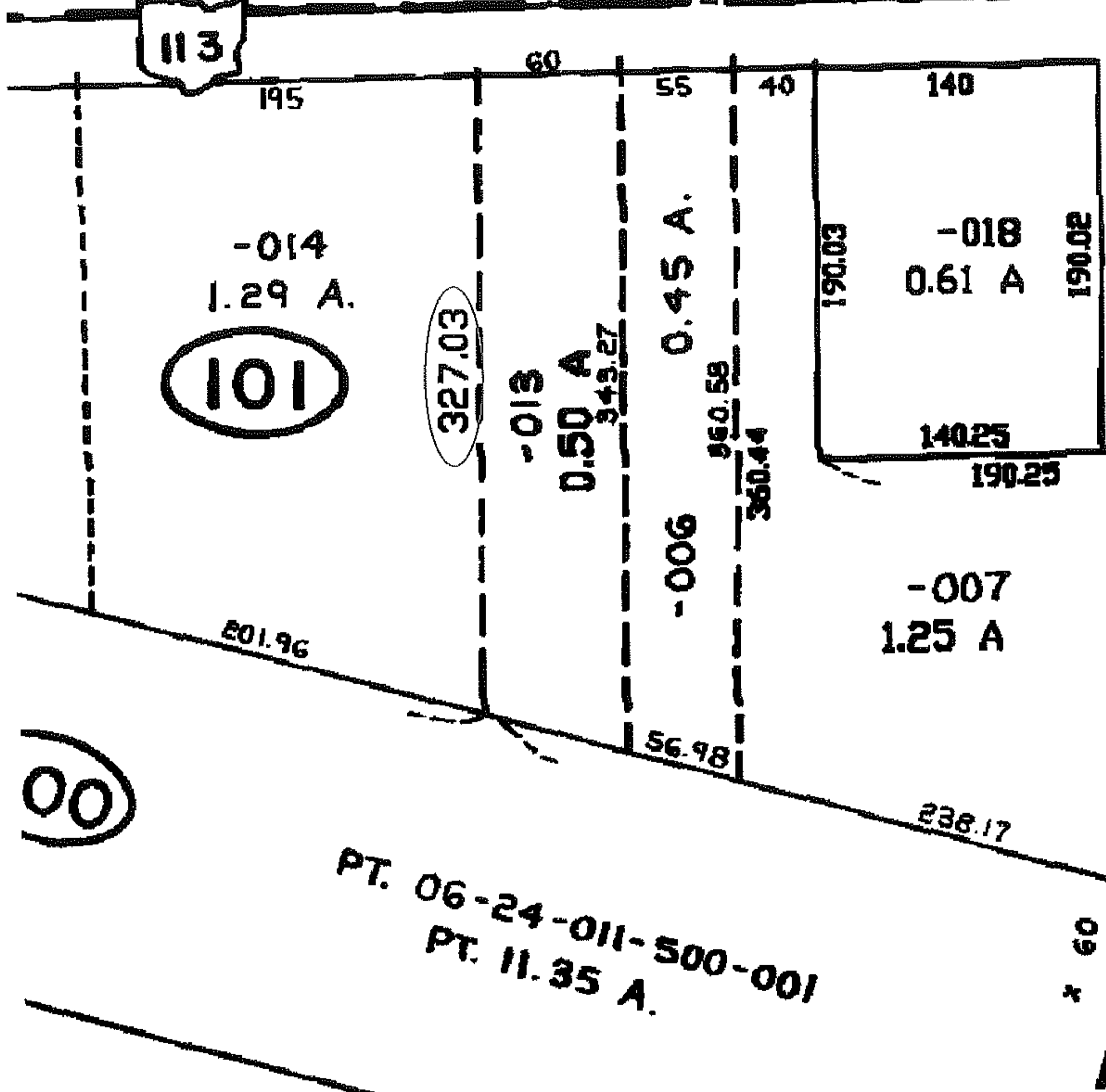
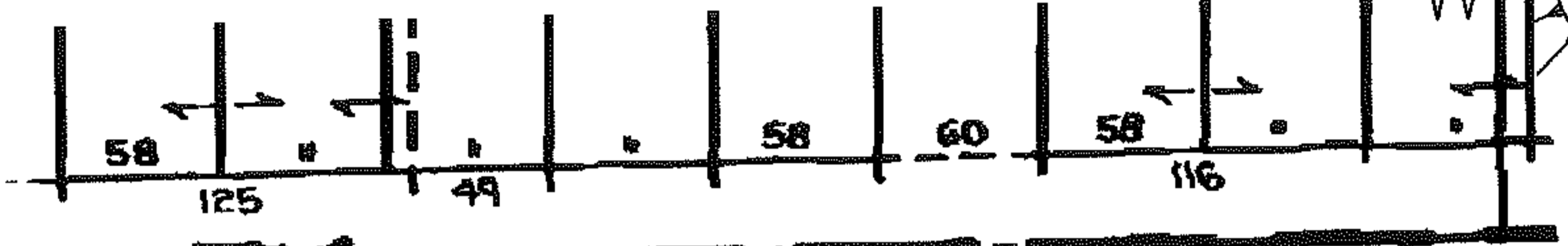
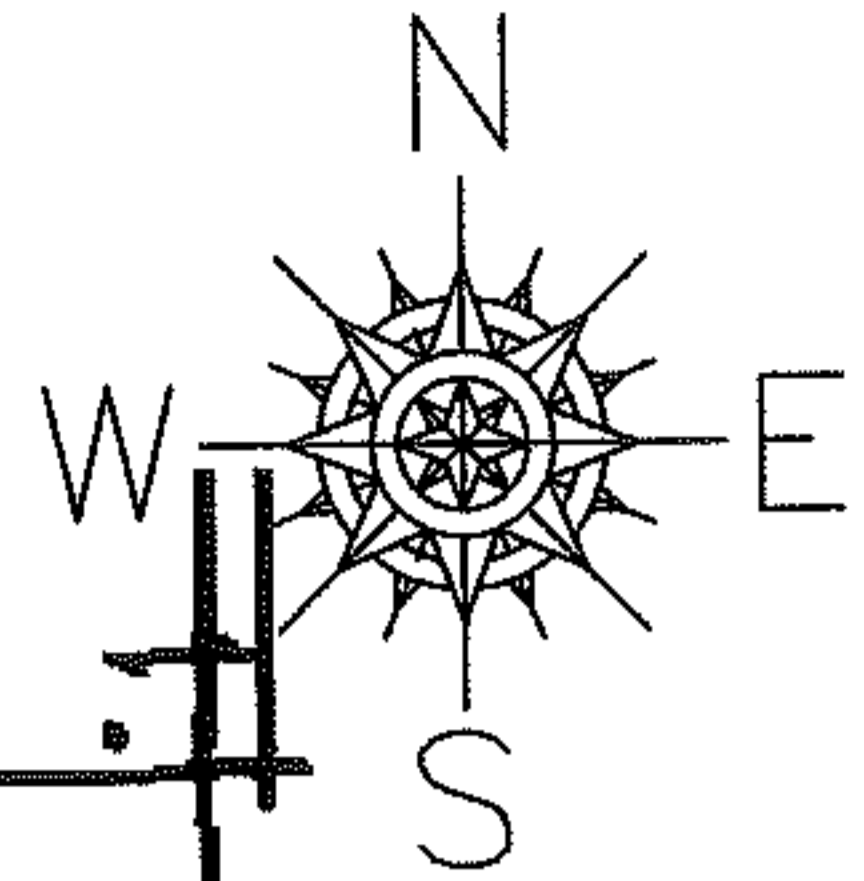
PARENT PARCEL: 06-24-012-101-013

07-01539-C

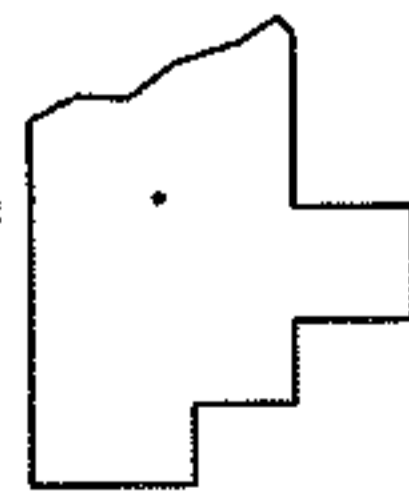
CHILD PARCEL: --SAME--

STARTING POINT: LOWELL ST AND PENFIELD AVE

DEPTH CORR PER SURVEY



PT. 06-24-011-500-001
PT. 11.35 A.



SPLITS/DEEDS PROCESSED

LORAIN COUNTY TAX MAP DEPARTMENT
226 MIDDLE AVE. ELYRIA, OHIO

SURVEYED BY: RAY HOLLIS
CLOSURE: 1:10,000
MAP PAGE(S): 06-096
APPROVED BY: DRH DATE: 10/10/2007
SCALE: NOT TO SCALE PRIOR INSTRUMENT: 20070224588