

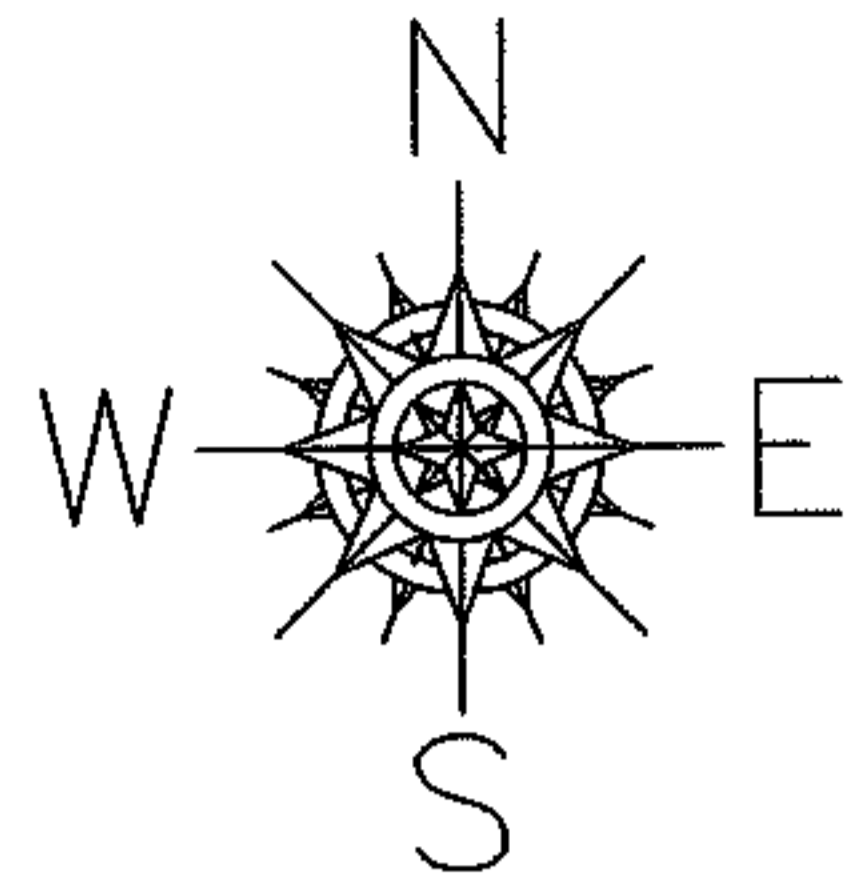
RASTER

PARENT PARCEL: 02-01-006-163-020

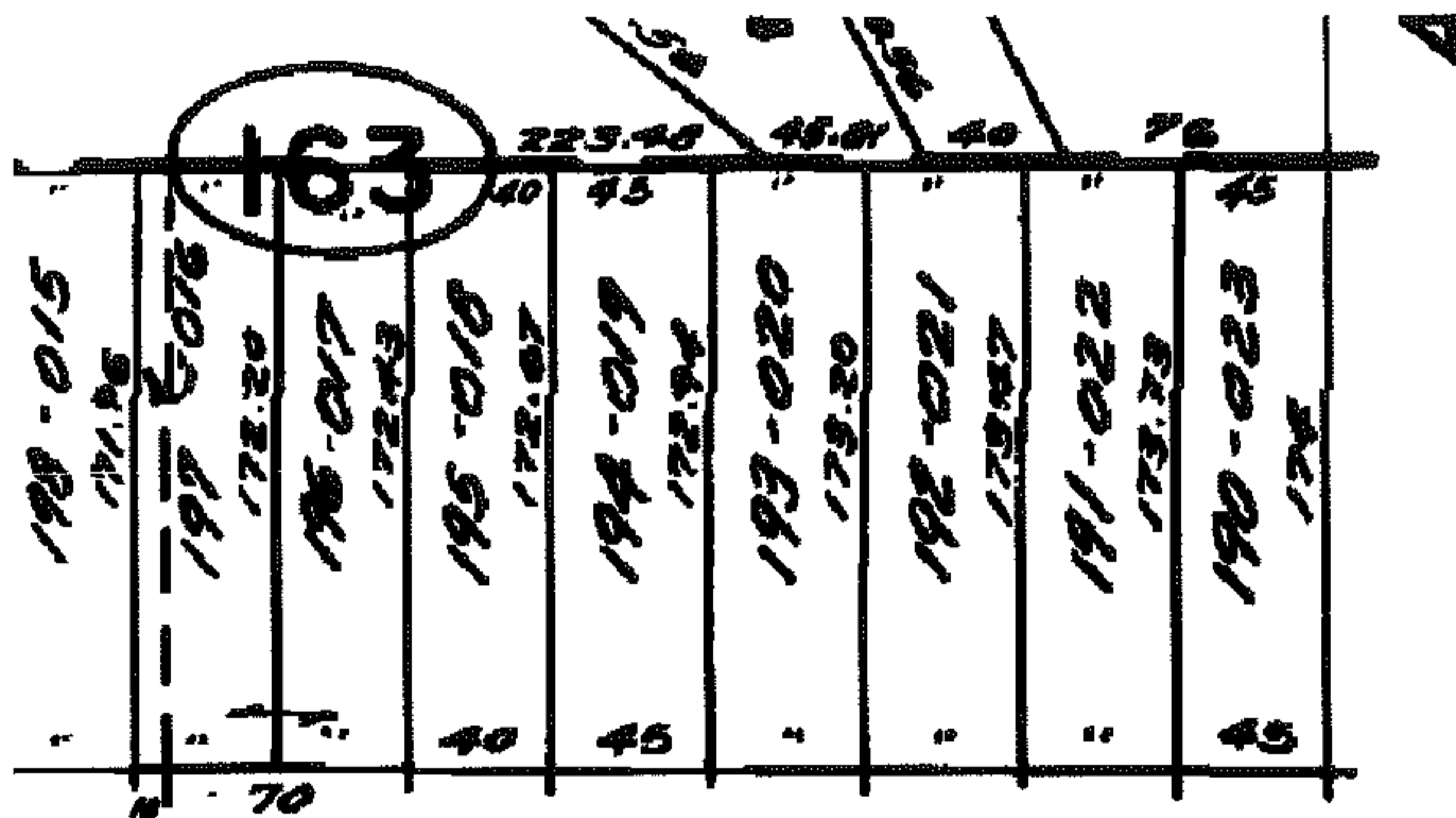
07-01514-A

CHILD PARCEL: --SAME--

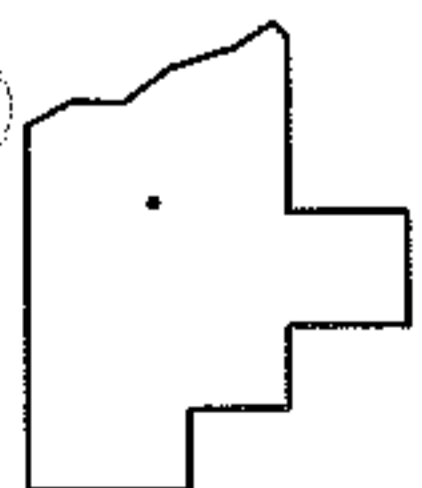
STARTING POINT: S.L. 193 IN HIGHLAND BLVD SUB.



DEPTH CORR  
PER PLAT NO MAP CORR



**HIGHLAND PARK**



SPLITS/DEEDS PROCESSED

LORAIN COUNTY TAX MAP DEPARTMENT  
226 MIDDLE AVE. ELYRIA, OHIO

SURVEYED BY: N/A  
 CLOSURE: N/A  
 MAP PAGE(S): 02-01-006-F  
 APPROVED BY: DRH DATE: 7/19/2007  
 SCALE: NOT TO SCALE PRIOR INSTRUMENT: 20070202831