

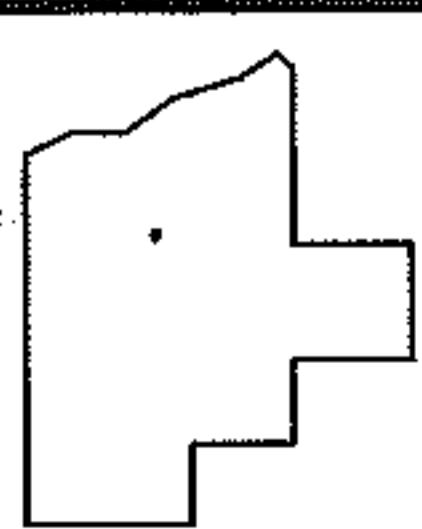
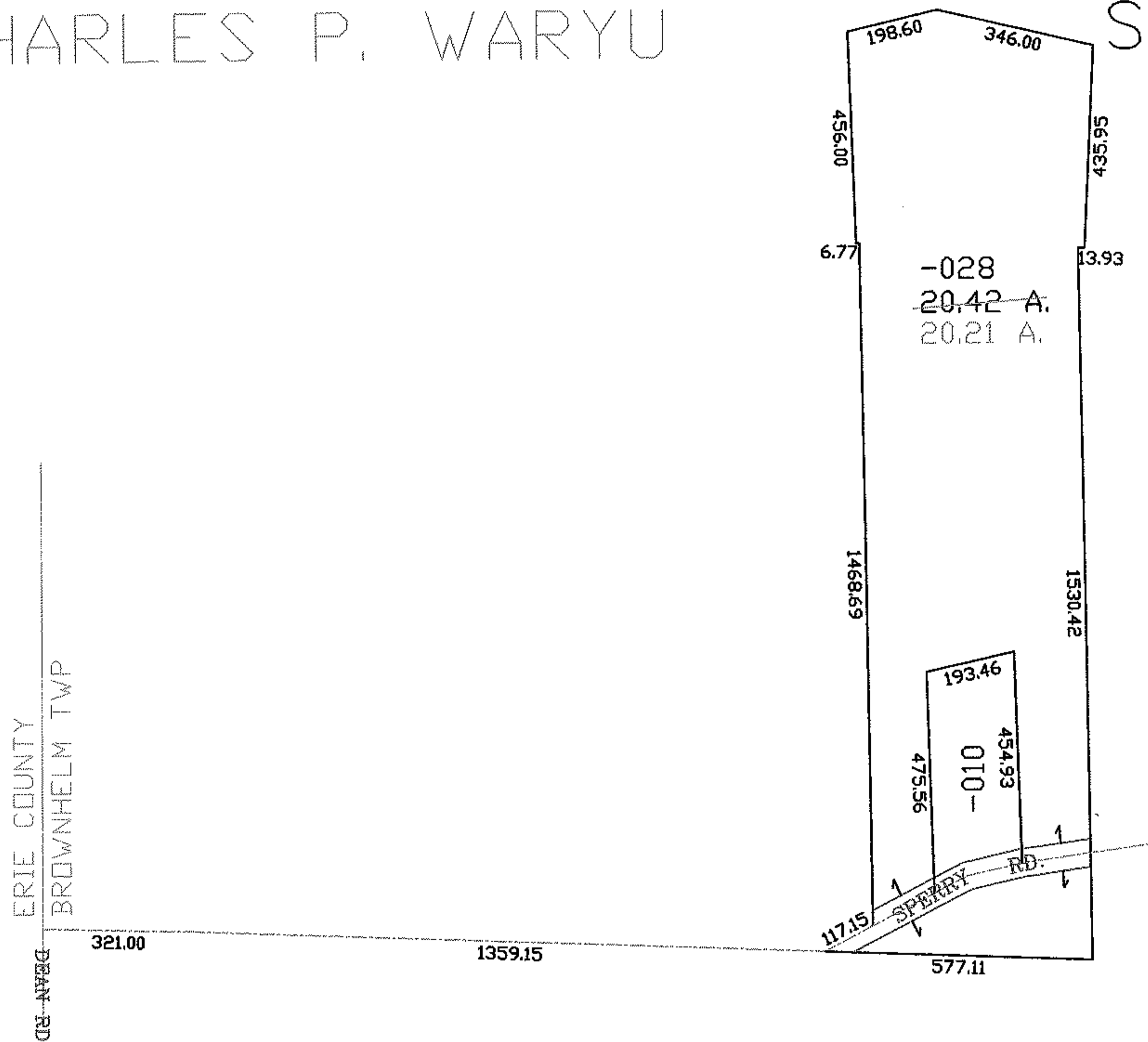
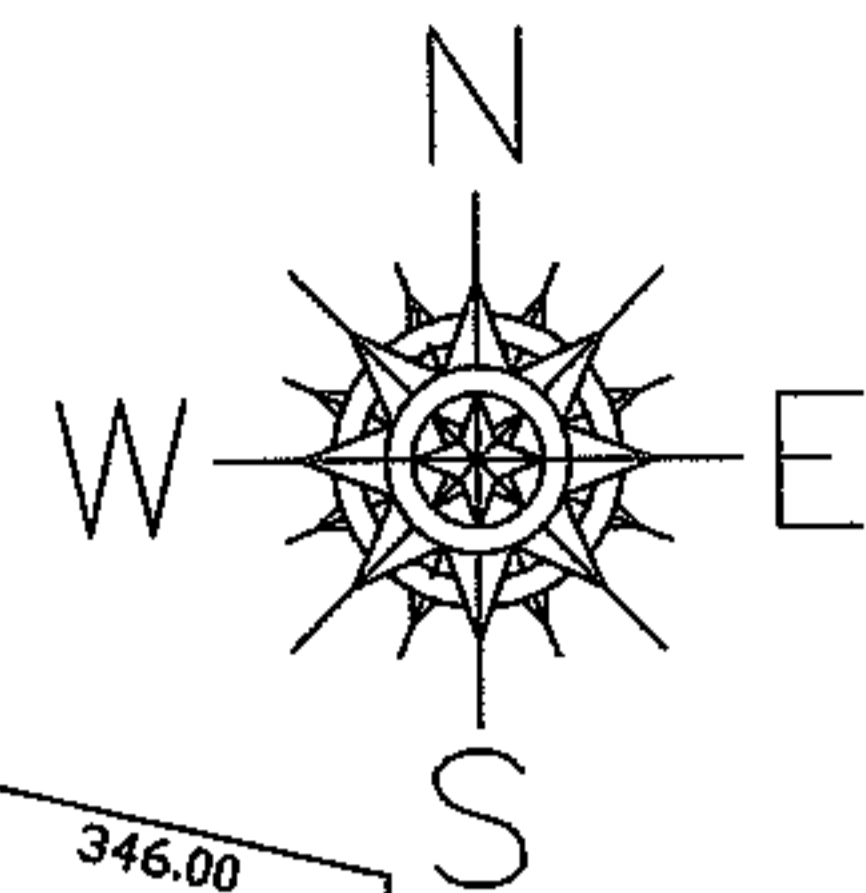
PARENT PARCEL: 01-00-065-000-028

CHILD PARCEL: --SAME--

STARTING POINT: INT CL SPERRY RD AND DEAN RD

07-01501-A

AC. CORR.
PER SURVEY
CHARLES P. WARYU



SPLITS/DEEDS PROCESSED
LORAIN COUNTY TAX MAP DEPARTMENT
226 MIDDLE AVE. ELYRIA, OHIO

SURVEYED BY: CHARLES P. WARYU
CLOSURE: 1:10,000
MAP PAGE(S): ~~01-00-065-000-028~~ 01-I
APPROVED BY: DRH DATE: 7/3/2007
SCALE: 1" = 400' PRIOR INSTRUMENT: 2005018716