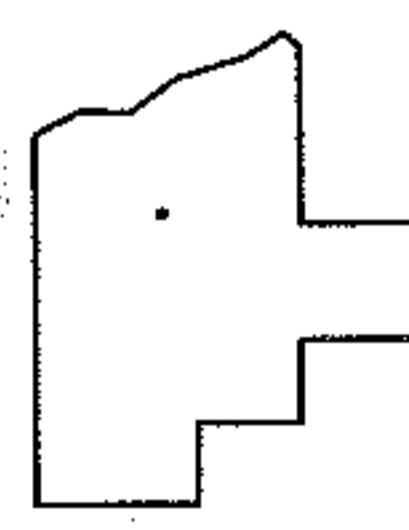
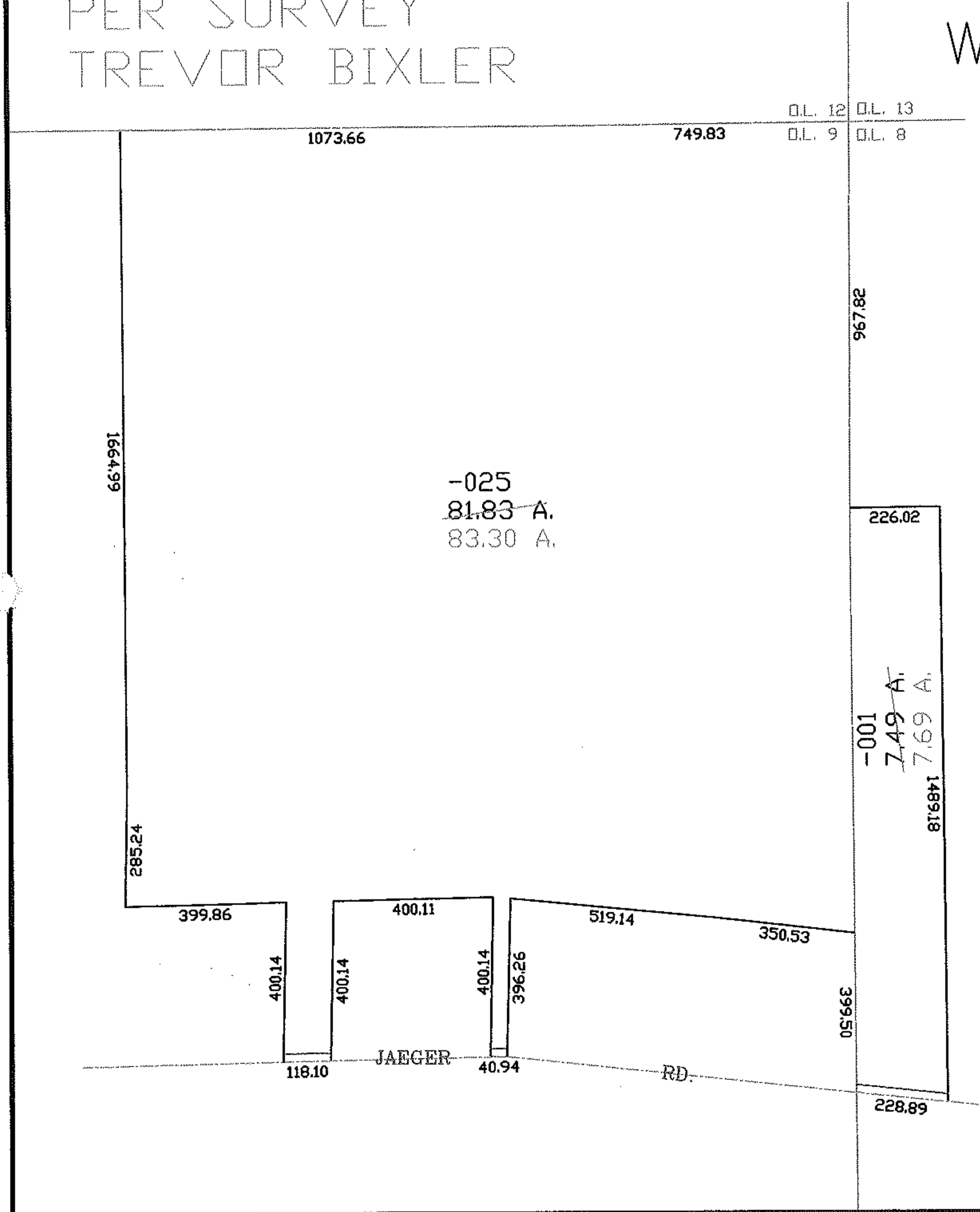
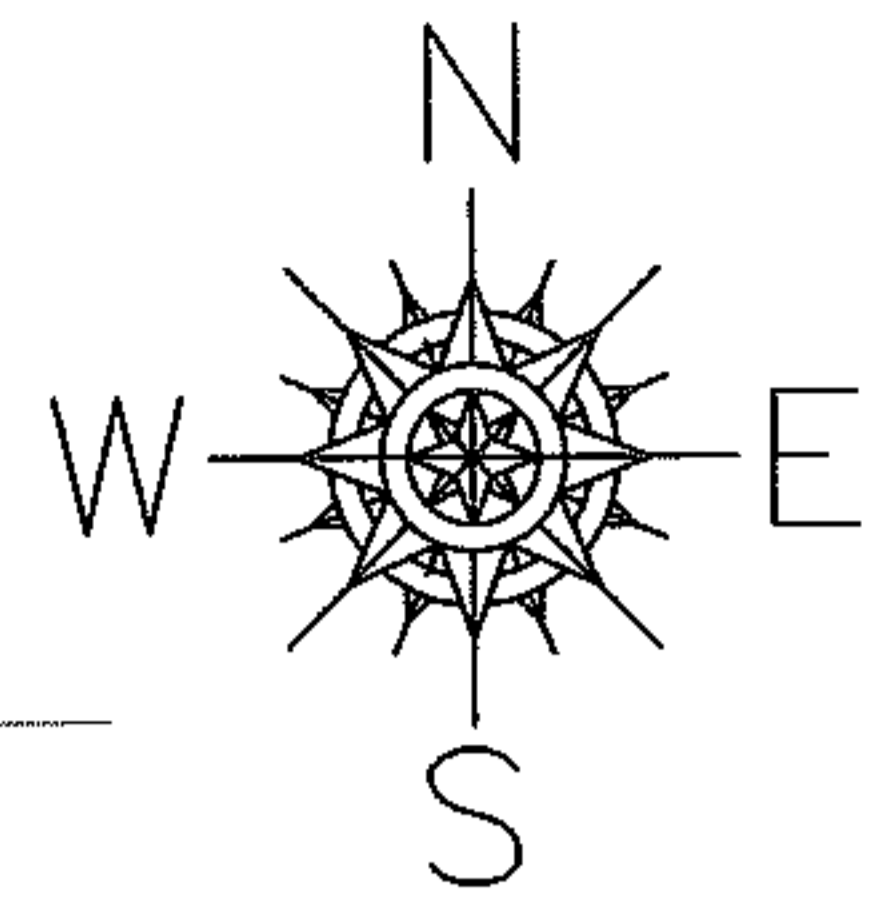


RASTER

PARENT PARCEL: 02-02-008-107-001, 02-02-009-101-025  
CHILD PARCEL: --SAME--  
STARTING POINT: MON BOX INT CL JAEGER RD AND E LINE O.L.9

07-01500-C

AC.CORR.  
PER SURVEY  
TREVOR BIXLER



**SPLITS/DEEDS PROCESSED**  
LORAIN COUNTY TAX MAP DEPARTMENT  
226 MIDDLE AVE. ELYRIA, OHIO

SURVEYED BY: TREVOR A. BIXLER  
CLOSURE: 1:10,000  
MAP PAGE(S): 02-02-008-A, 02-02-009-B  
APPROVED BY: DRH DATE: 7/9/2007  
SCALE: 1" = 400' PRIOR INSTRUMENT: 20000711951