

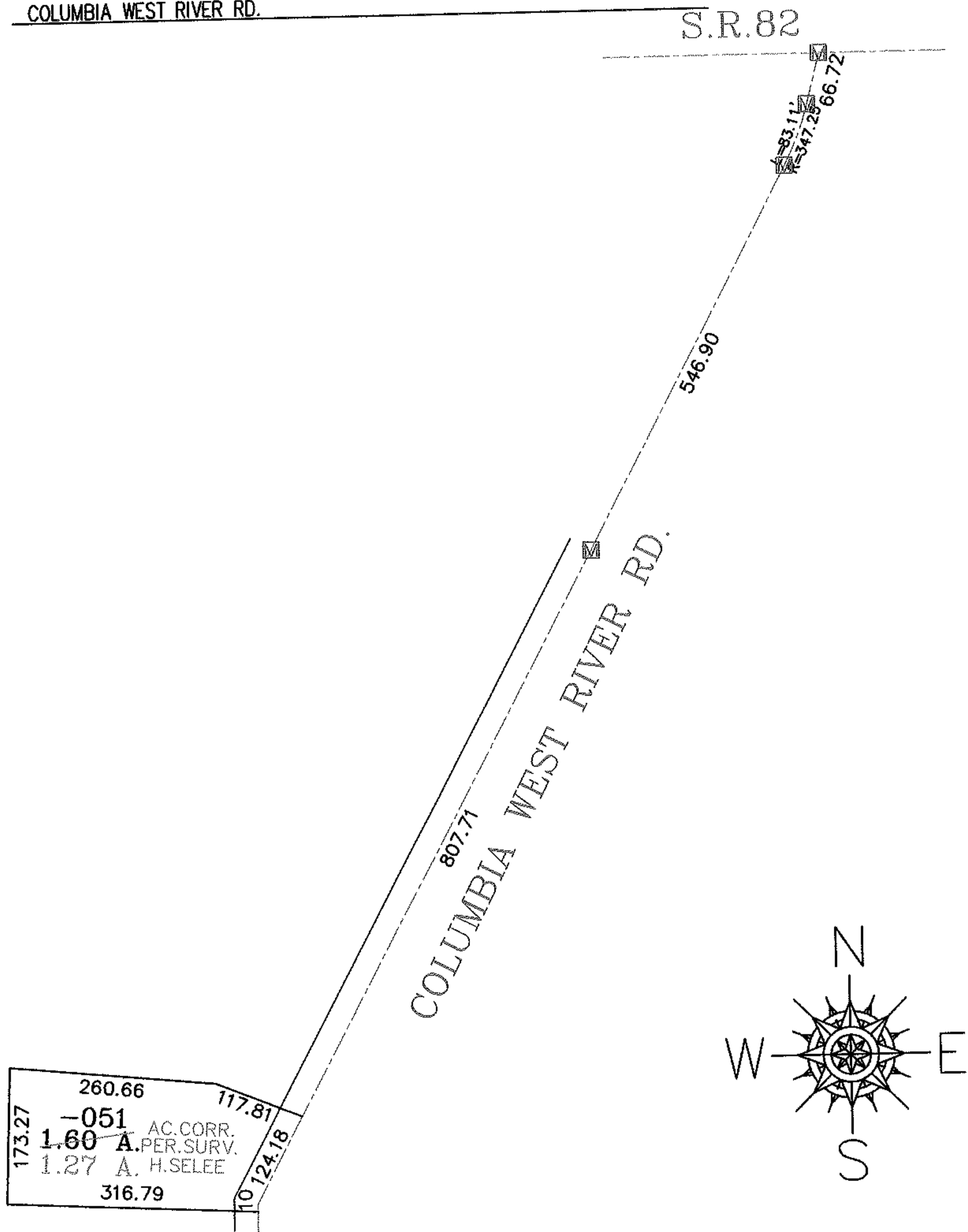
RASTER

PARENT PARCEL: 12-00-055-101-051

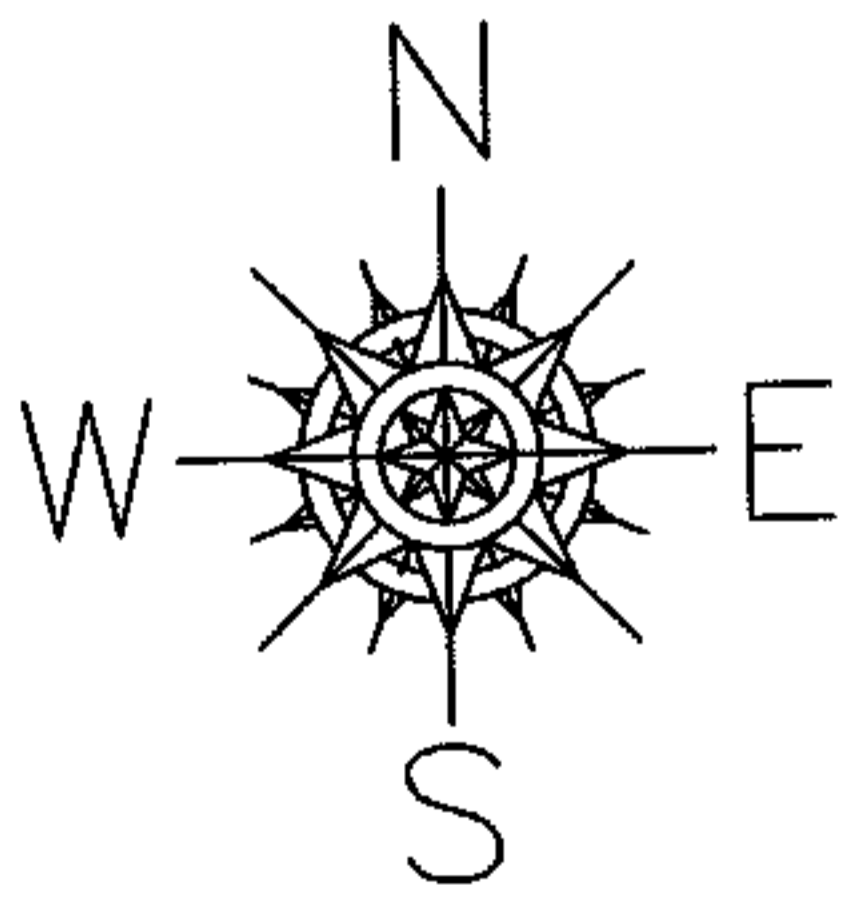
07-01493-D

CHILD PARCEL:

STARTING POINT: AT A MON BOX AT THE INTERSECTION OF C/L OF S.R.82 AND C/L OF COLUMBIA WEST RIVER RD.

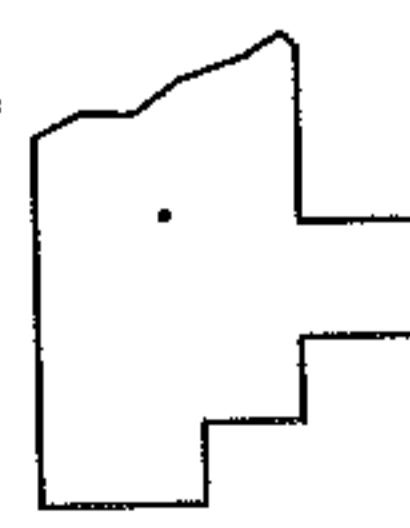


260.66
 117.81
 316.79
 173.27
 -051 AC. CORR.
 1.60 A. PER. SURV.
 1.27 A. H. SELEE
 10 124.18



COLUMBIA WEST RIVER RD.

S.R.82



SPLITS/DEEDS PROCESSED
 LORAIN COUNTY TAX MAP DEPARTMENT
 226 MIDDLE AVE. ELYRIA, OHIO

SURVEYED BY: HOWARD R. SELEE
 CLOSURE: .00:10.000
 MAP PAGE(S): 12-00-055-A
 APPROVED BY: RRM DATE: 6-20-07
 SCALE: 1" = 200' PRIOR INSTRUMENT: 98581847