

RASTER

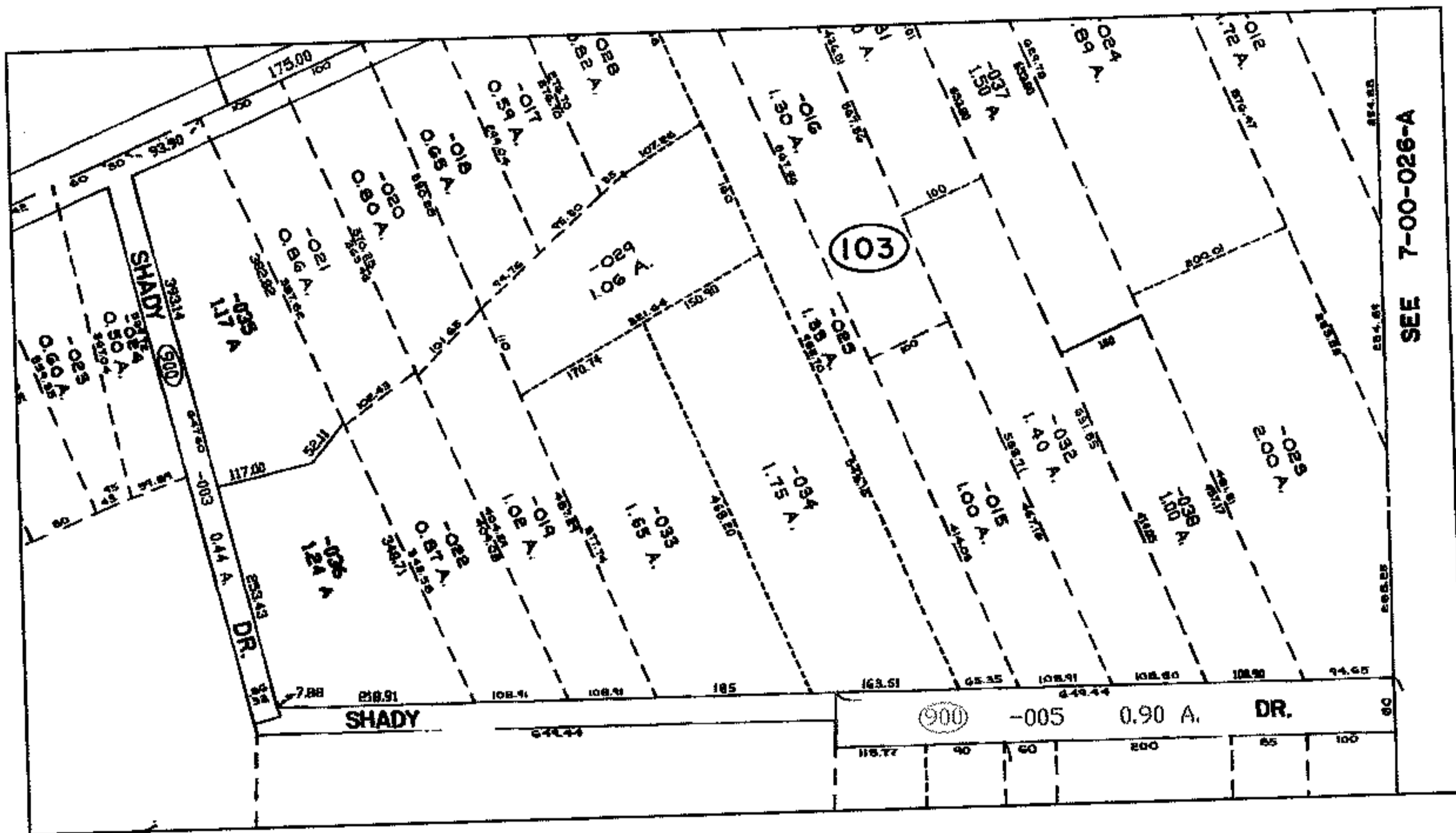
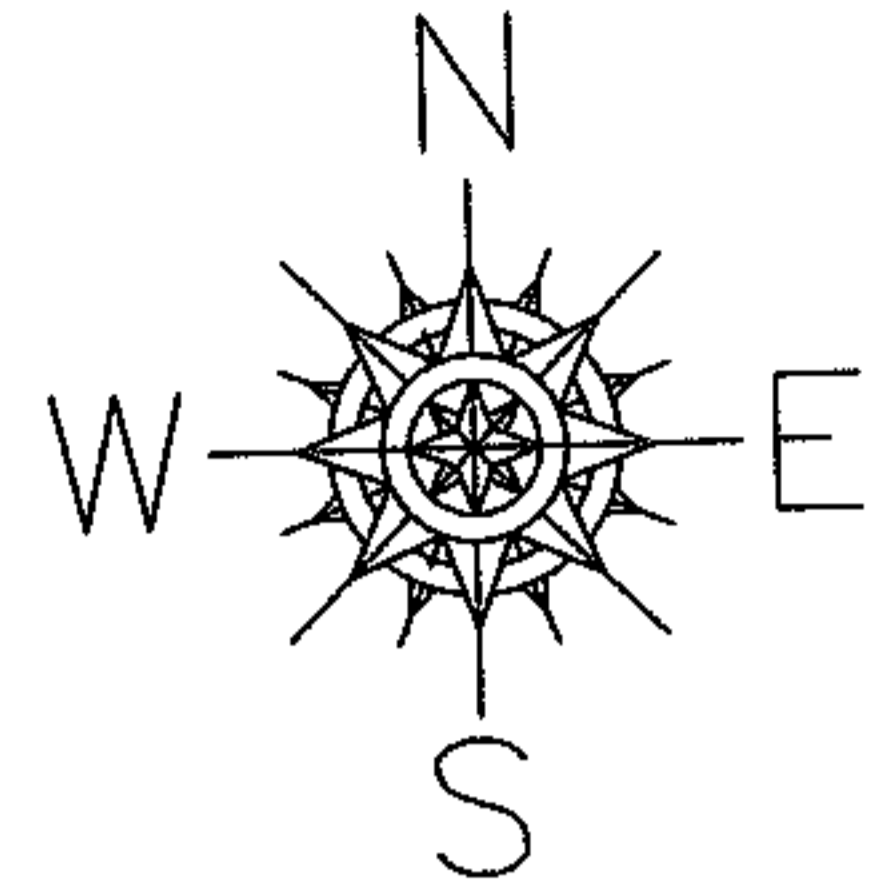
07-01475-C

PARENT PARCEL: ADD TO DUPLICATE

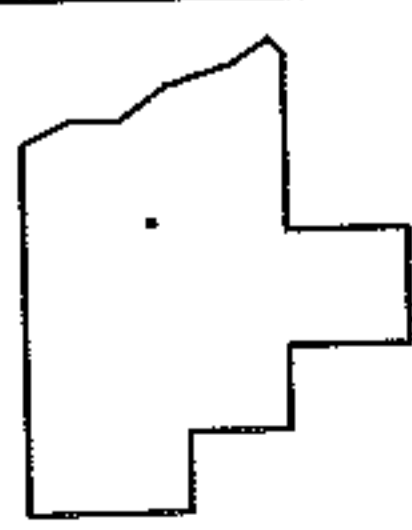
CHILD PARCEL: 07-00-035-900-005

STARTING POINT: SHADY DR.

ADD TO DUP.
PER DEED
1134/529



SEE 7-00-026-A



SPLITS/DEEDS PROCESSED

LORAIN COUNTY TAX MAP DEPARTMENT
226 MIDDLE AVE. ELYRIA, OHIO

SURVEYED BY: N/A

CLOSURE: N/A

MAP PAGE(S): 07-00-035-B

APPROVED BY: DRH DATE: 4/13/2007

SCALE: 1" = 400 PRIOR INSTRUMENT: 1134/529