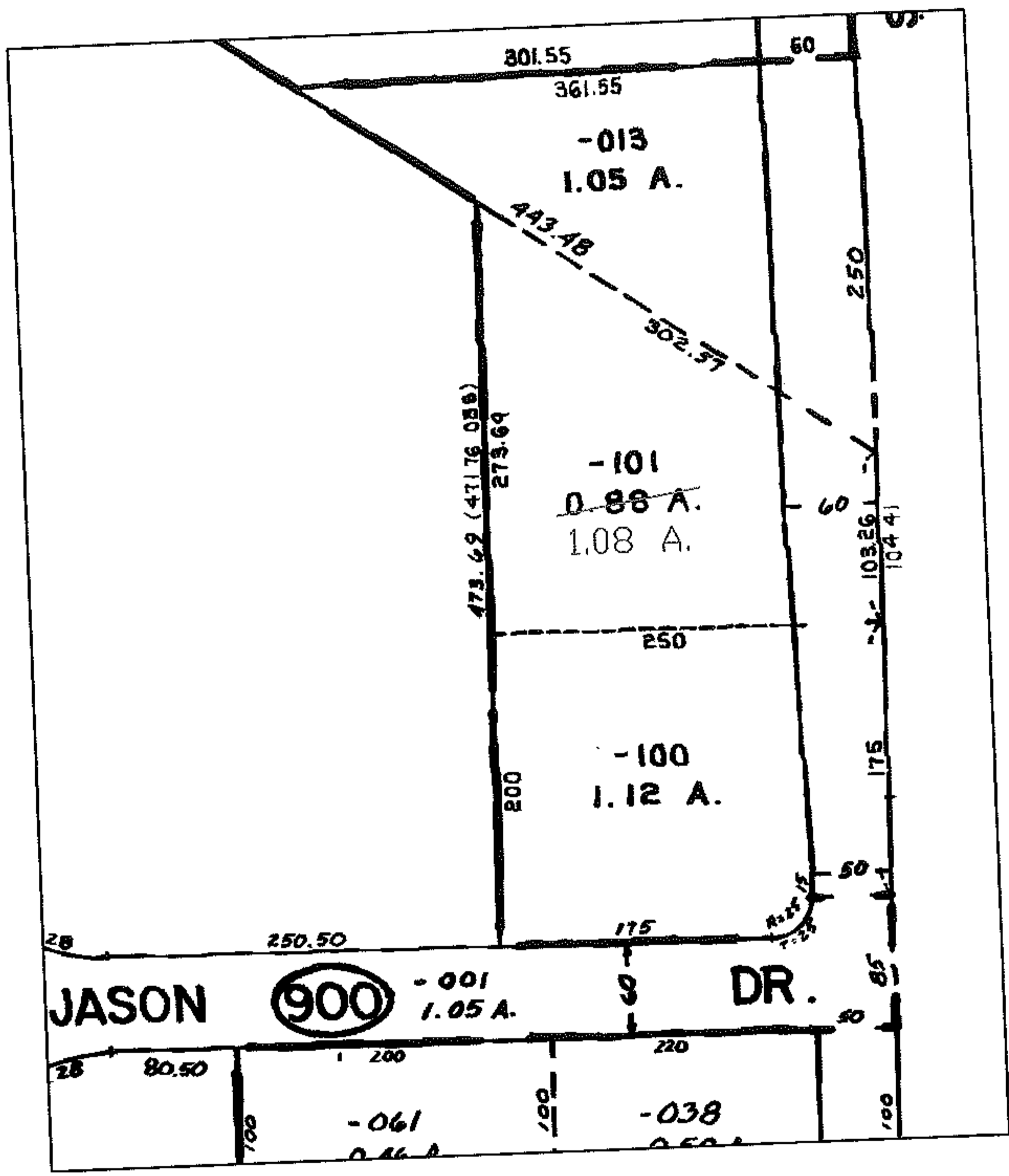
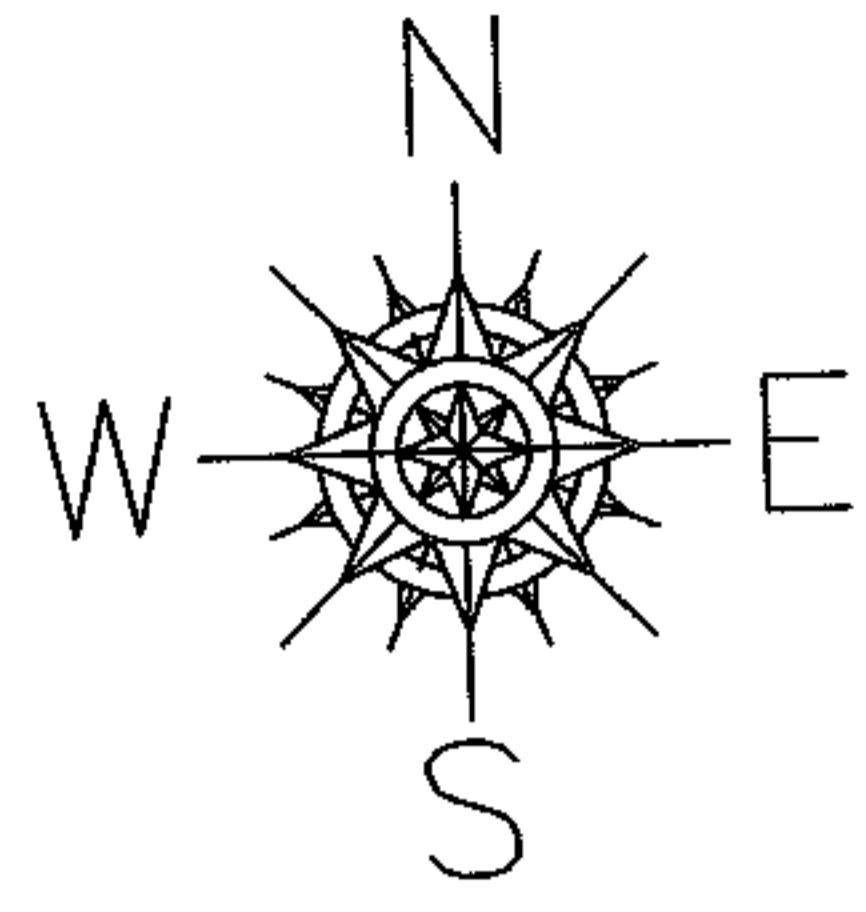


RASTER

PARENT PARCEL: 11-00-051-000-101
CHILD PARCEL: --SAME--
STARTING POINT:

007-01470-A

AC. CORR.
PER SURVEY
JOHN WELSH



WELSH'S SENDING NEW MAP COPY



SPLITS/DEEDS PROCESSED
LORAIN COUNTY TAX MAP DEPARTMENT
226 MIDDLE AVE. ELYRIA, OHIO

SURVEYED BY: JOHN WELSH
CLOSURE: 1:10,000
MAP PAGE(S): 11-00-051-B
APPROVED BY: DRH DATE: 3/23/2007
SCALE: 1" = 200' PRIOR INSTRUMENT: 20000704316