

RASTER

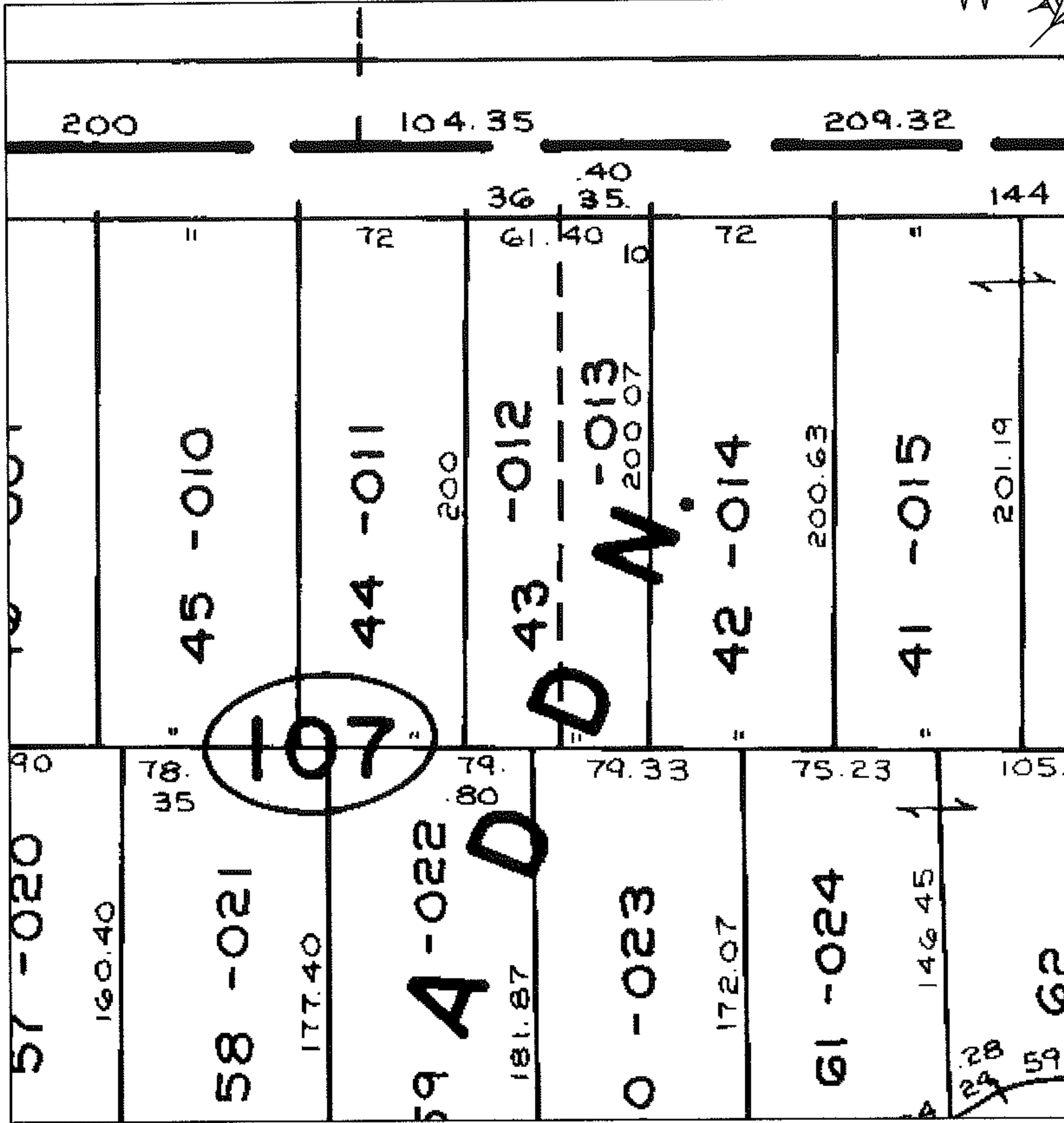
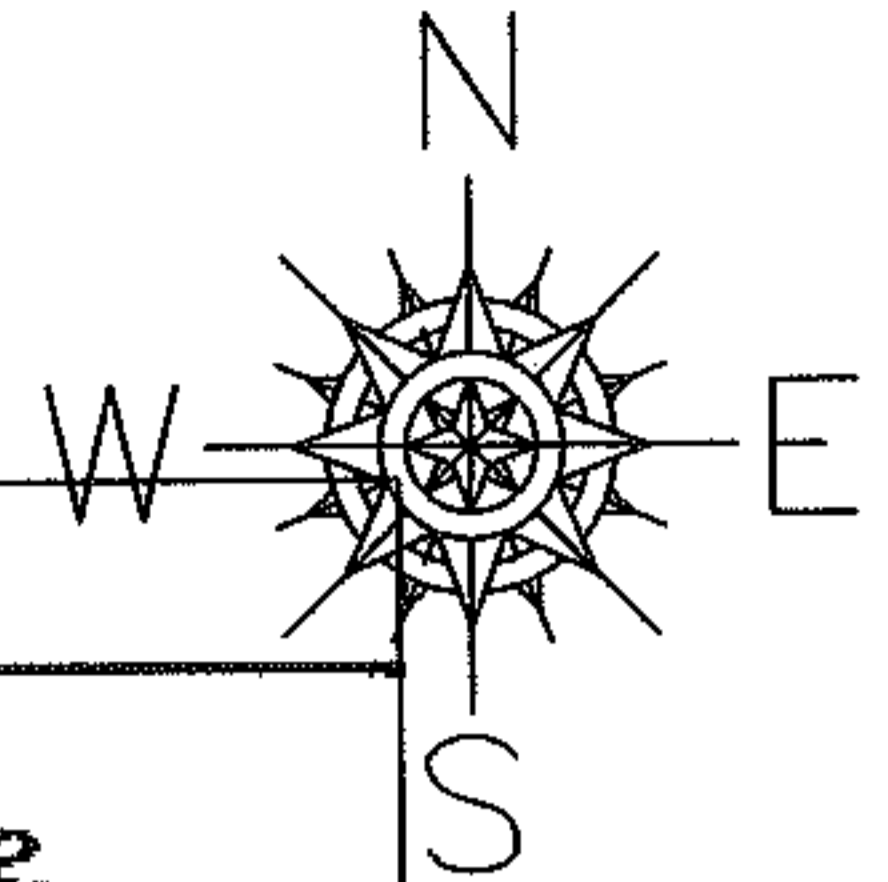
PARENT PARCEL: 09-00-087-107-013 & -014

07-01461-C

CHILD PARCEL: --SAME--

STARTING POINT: S.L. 42 & 43 IN COLLEGE PARK ADDN. PV. 15 P. 13, 14, 15

F&D CORR. PER MAP & DEED



SPLITS/DEEDS PROCESSED

LORAIN COUNTY TAX MAP DEPARTMENT
226 MIDDLE AVE. ELYRIA, OHIO

SURVEYED BY: N/A

CLOSURE: N/A

MAP PAGE(S): 09-00-087-B

APPROVED BY: DRH DATE: 2/27/2007

SCALE: 1" = 100 PRIOR INSTRUMENT: O.R. 587/60