

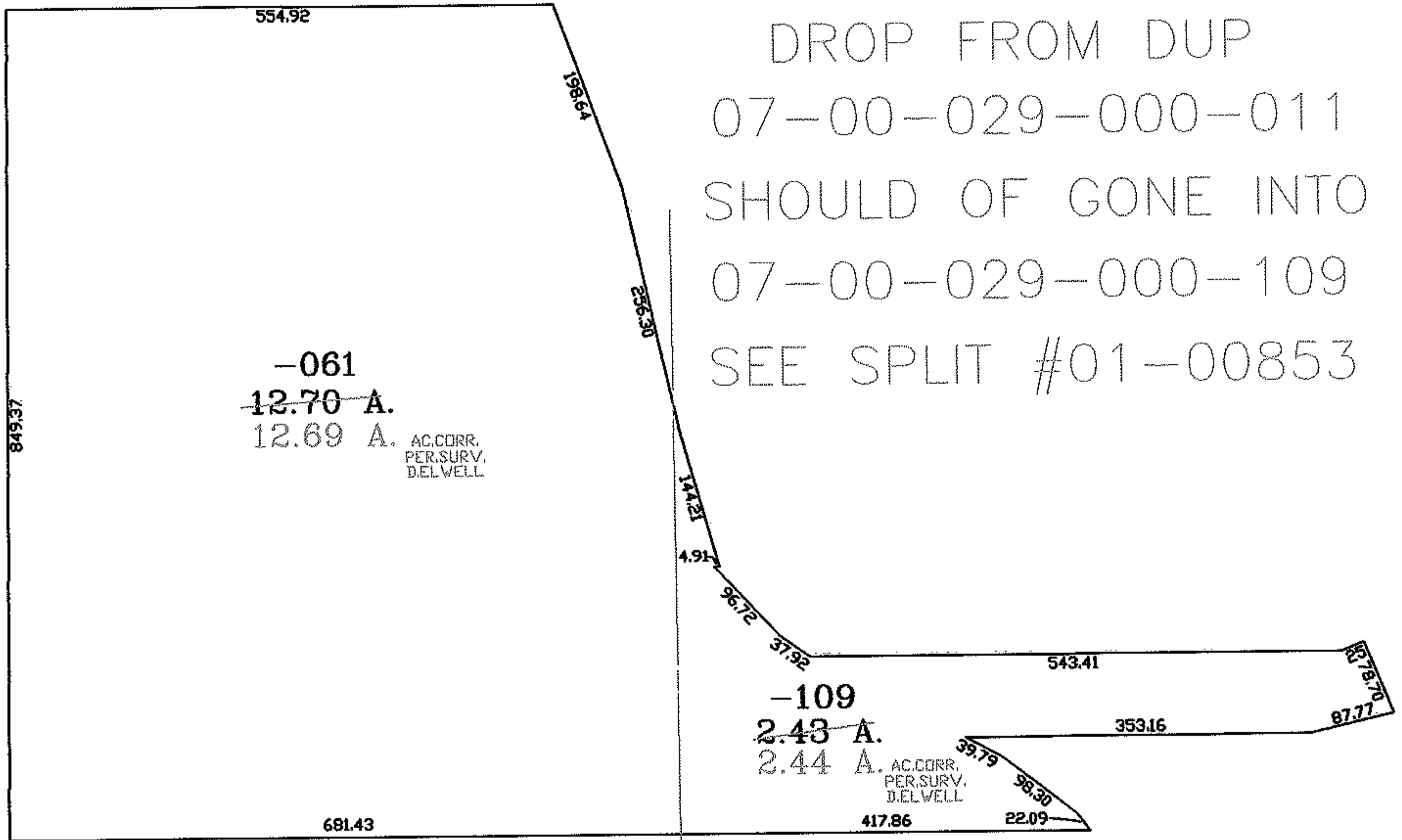
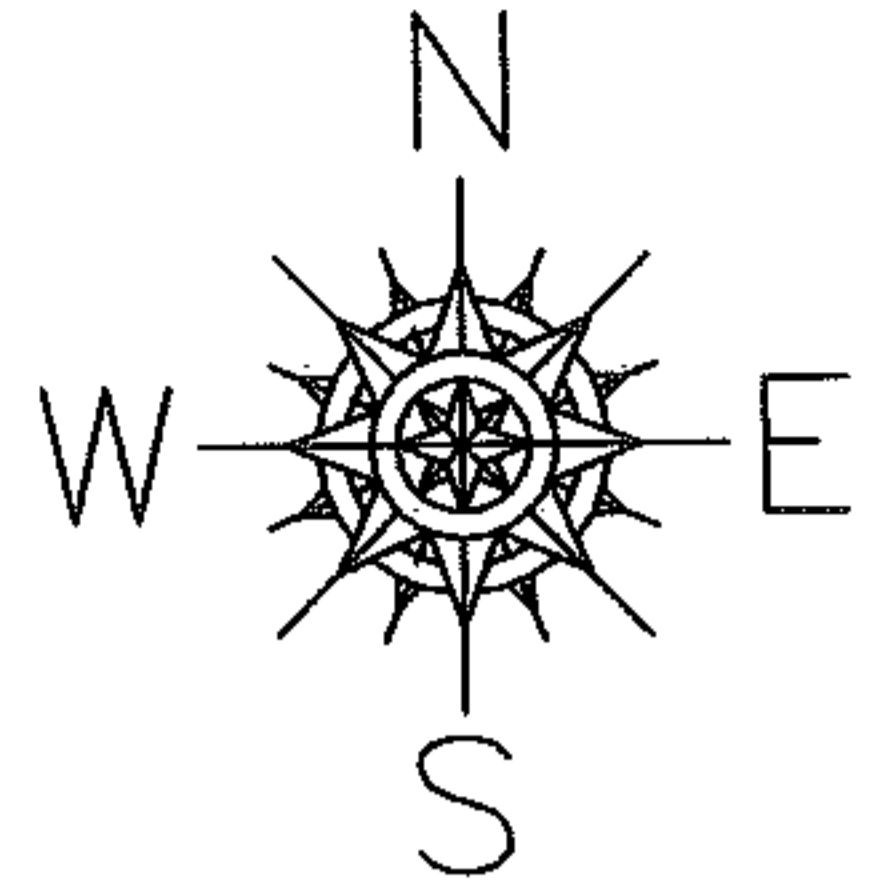
RASTER

PARENT PARCEL: 07-00-029-000-109, 07-00-032-000-061

CHILD PARCEL:

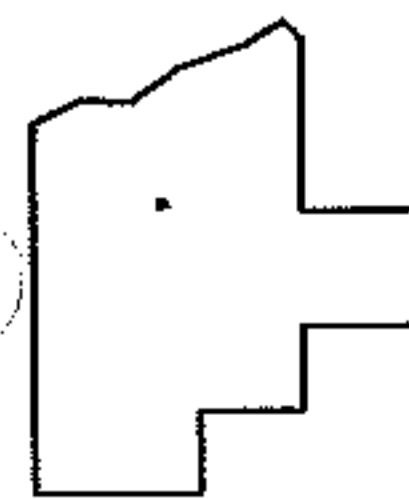
STARTING POINT: SOUTHEAST CORNER OF O.L.29

07-01446-C



DROP FROM DUP  
07-00-029-000-011  
SHOULD OF GONE INTO  
07-00-029-000-109  
SEE SPLIT #01-00853

O.L.32 O.L.29  
O.L.33 O.L.28



**SPLITS/DEEDS PROCESSED**  
LORAIN COUNTY TAX MAP DEPARTMENT  
226 MIDDLE AVE. ELYRIA, OHIO

SURVEYED BY: DAVID L. ELWELL  
CLOSURE: 00:10:00  
MAP PAGE(S): 7-00-029-C, 7-B  
APPROVED BY: RRM DATE: 1-11-07  
SCALE: 1" = 200 PRIOR INSTRUMENT: 20010786362