

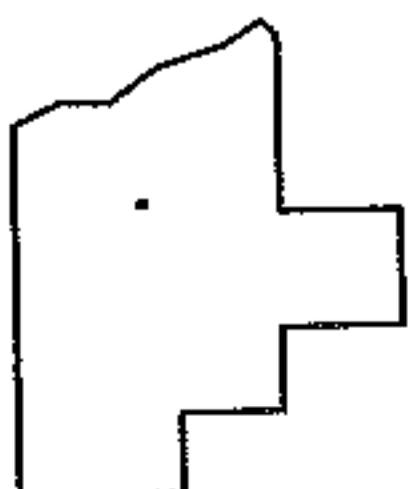
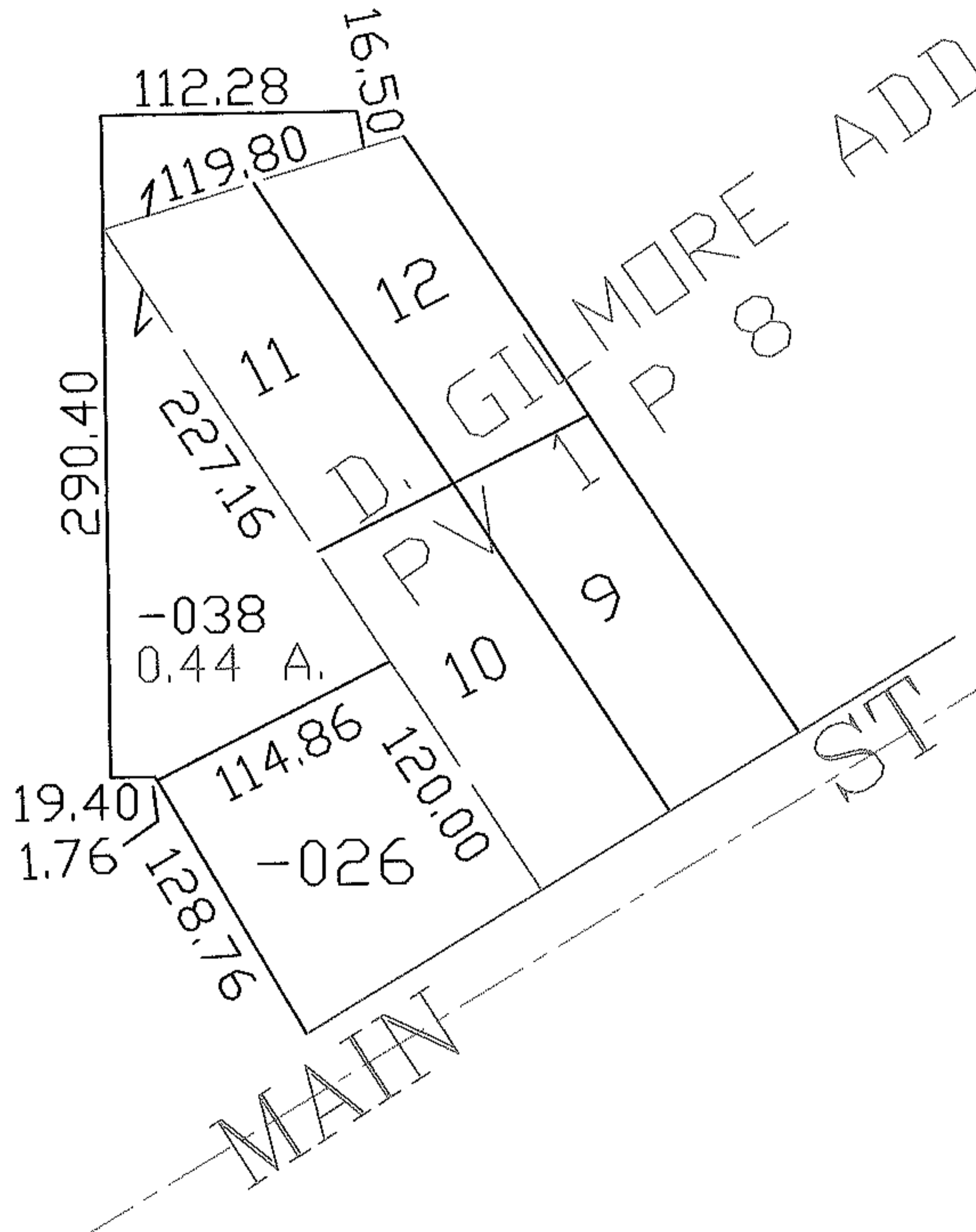
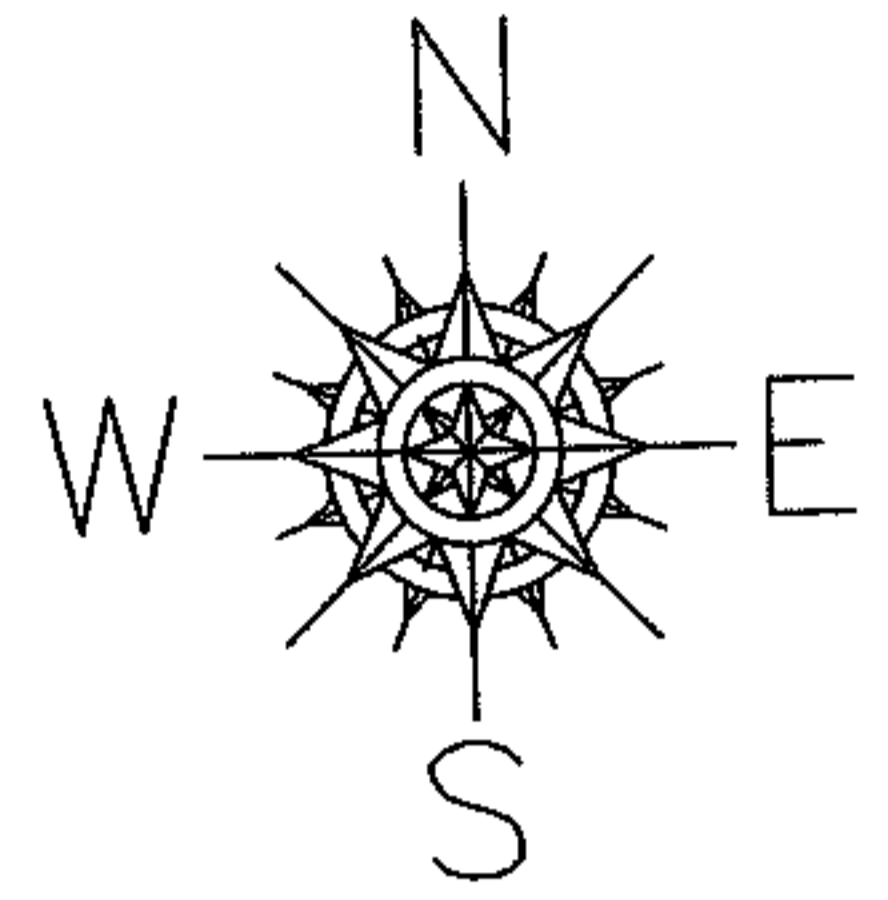
PARENT PARCEL: 20-05-023-101-038

06-01444-C

CHILD PARCEL: --SAME--

STARTING POINT: INT OF NW ROW OF MAIN ST AND S CORNER OF S.L. 10 IN D. GILMORE ADD

AC. CORR.  
PER SURVEY  
T. SNEZEK



SPLITS/DEEDS PROCESSED

LORAIN COUNTY TAX MAP DEPARTMENT  
226 MIDDLE AVE. ELYRIA, OHIO

SURVEYED BY: T. SNEZEK  
 CLOSURE: 1:10,000  
 MAP PAGE(S): 20-05-023-B  
 APPROVED BY: DRH DATE: 1/22/2007  
 SCALE: 1" = 100' PRIOR INSTRUMENT: 20020836337