

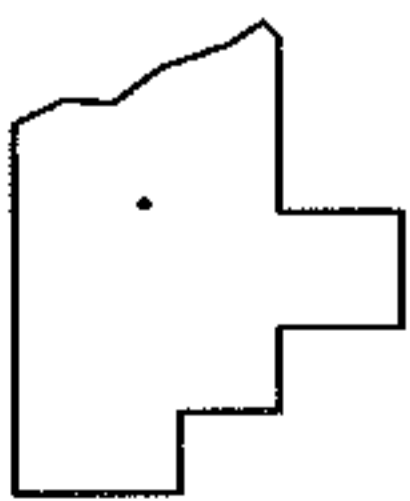
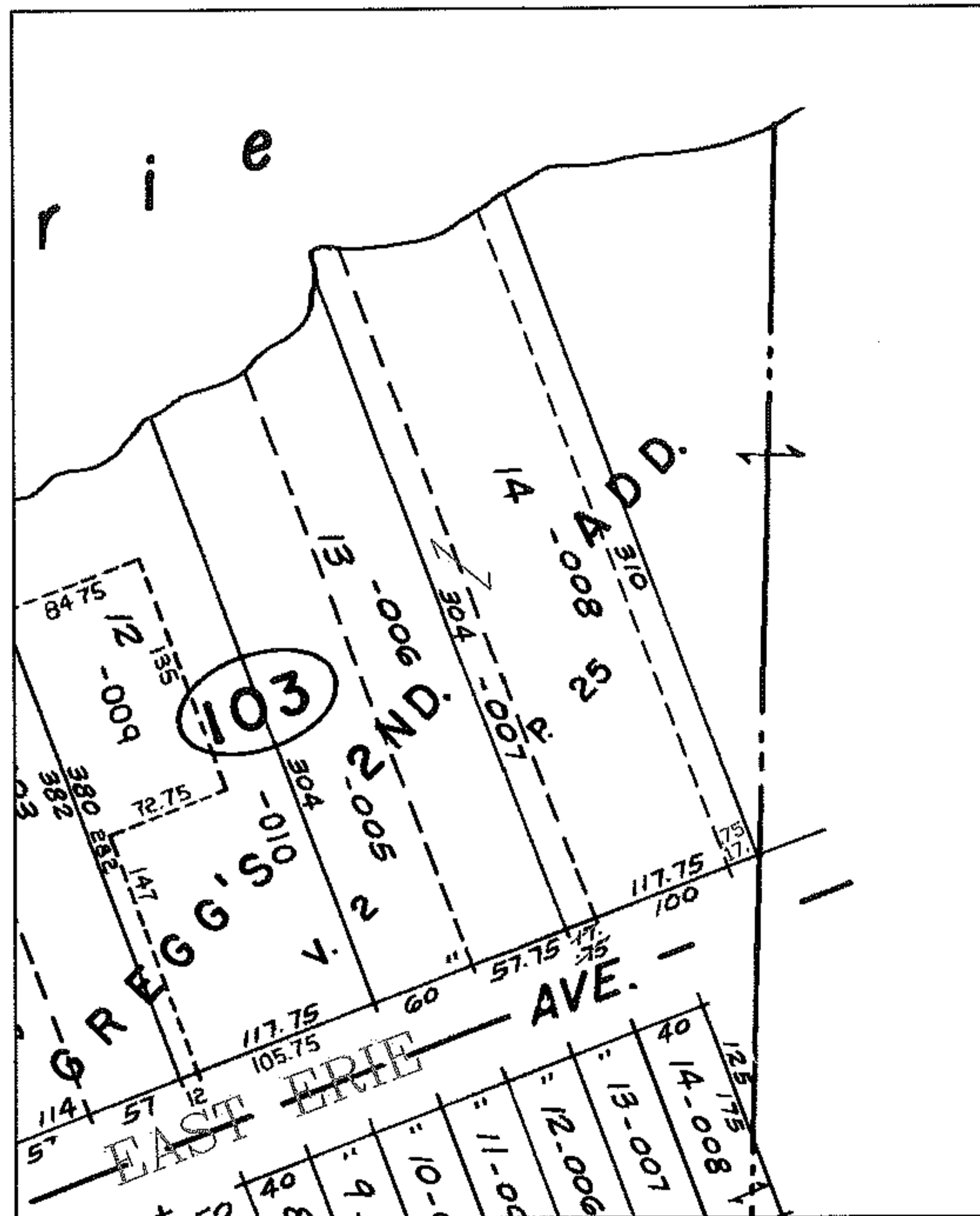
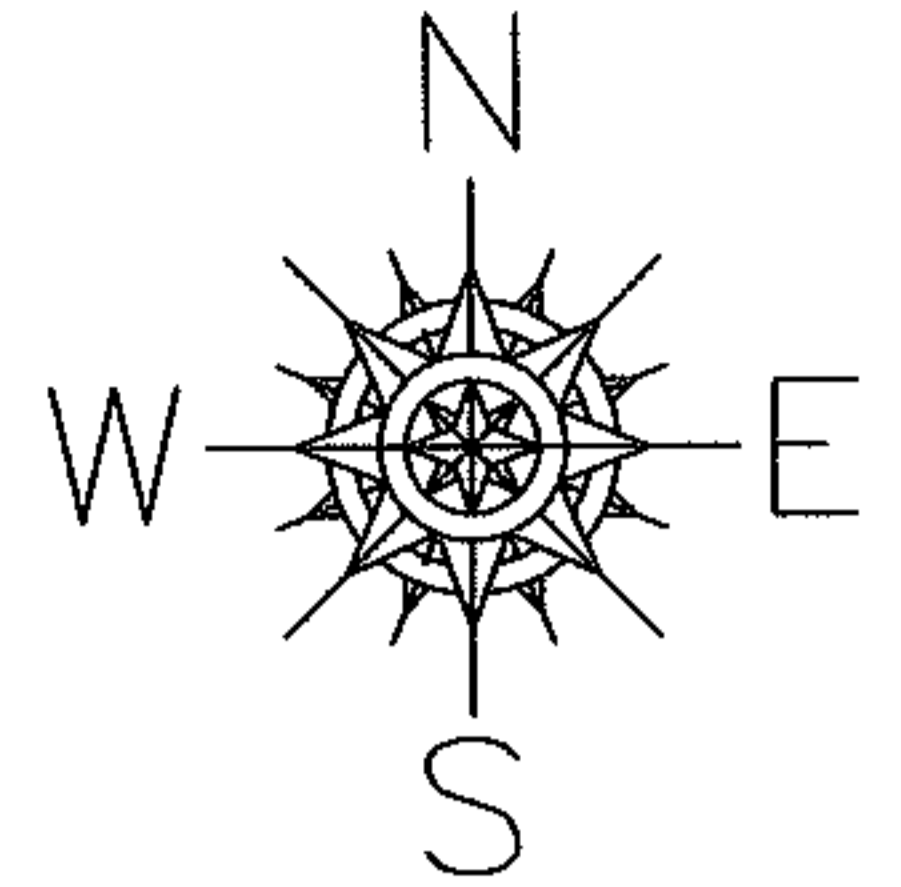
PARENT PARCEL: 02-01-003-103-007

CHILD PARCEL: --SAME--

STARTING POINT: SUBLot 14 IN EBENEZER GREGG'S ADDITION PV 2/25

06-01440-A

MAP CORRECTION  
SPLIT WAS ORIGINALLY DONE  
ON WRONG SIDE OF SUBLot



**SPLITS/DEEDS PROCESSED**  
LORAIN COUNTY TAX MAP DEPARTMENT  
226 MIDDLE AVE. ELYRIA, OHIO

SURVEYED BY: N/A  
CLOSURE: N/A  
MAP PAGE(S): 02-01-003-B  
APPROVED BY: DRH DATE: 1/9/2006  
SCALE: 1" = 200' PRIOR INSTRUMENT: DV 473/379