

RASTER

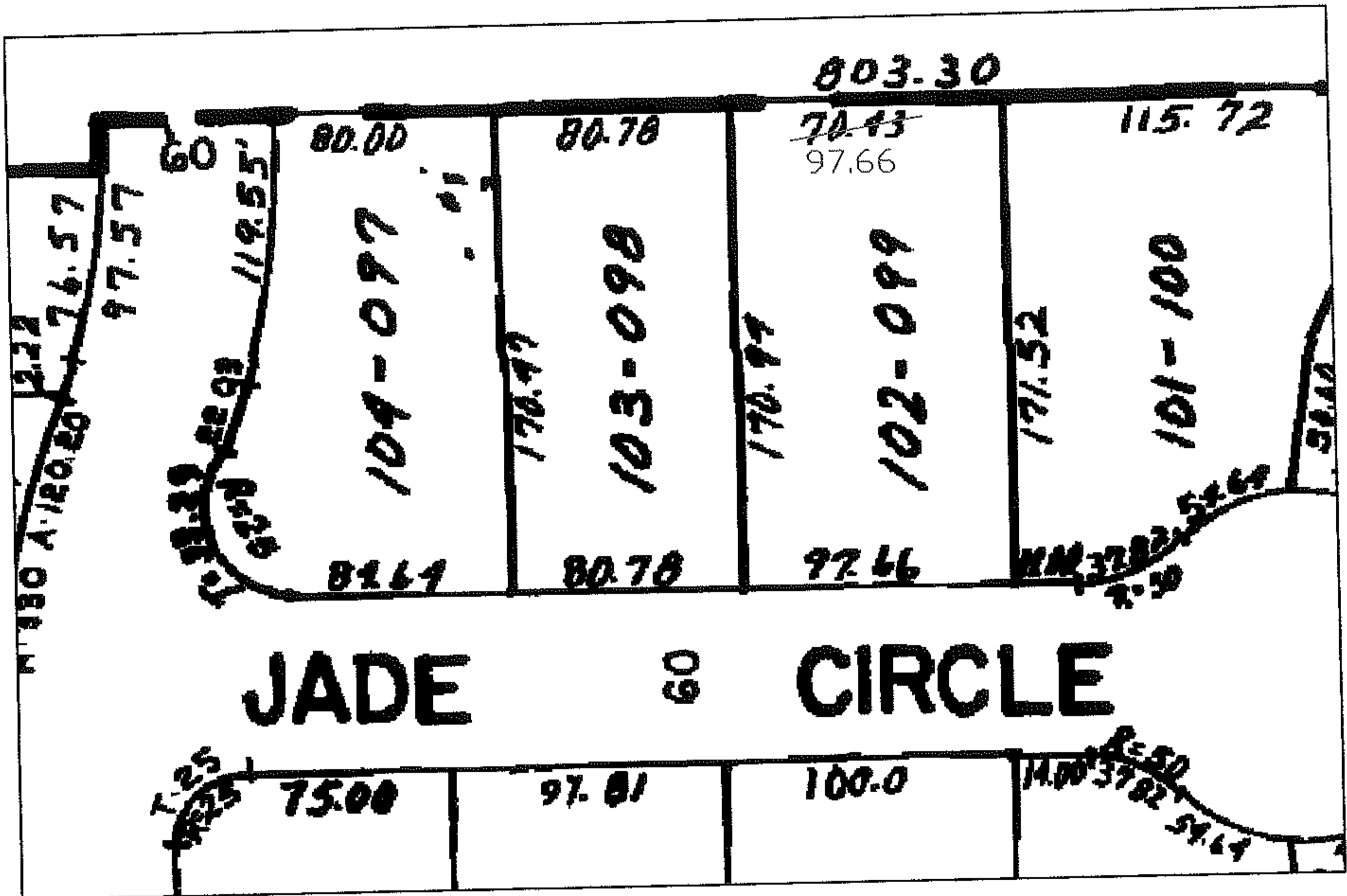
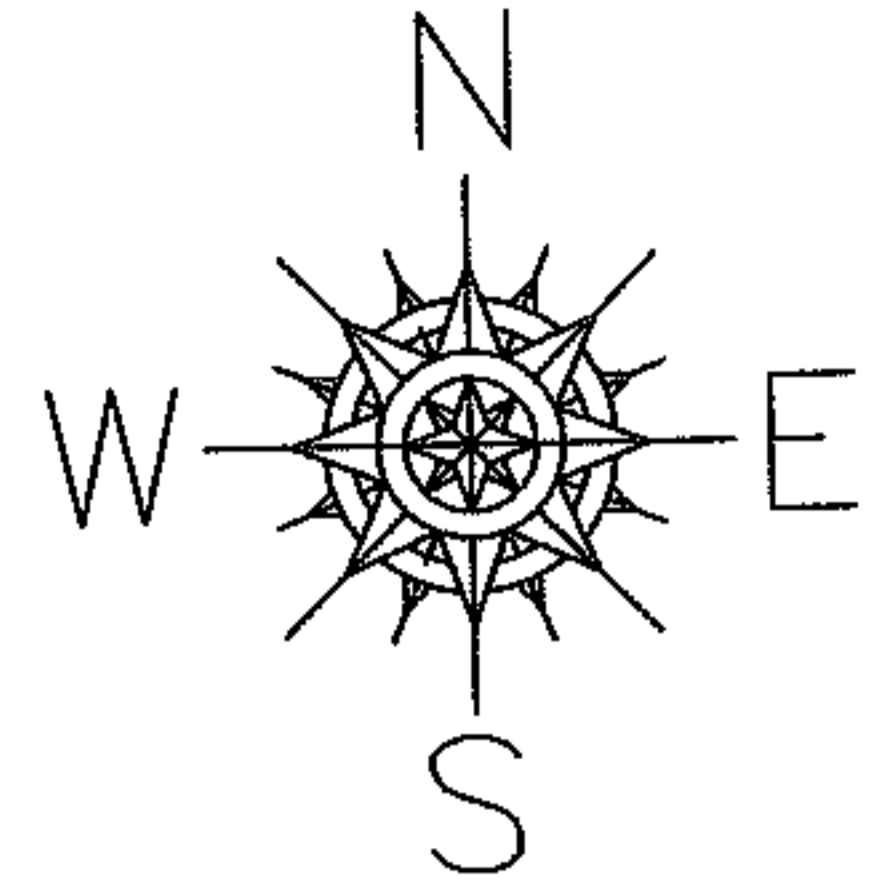
PARENT PARCEL: 07-00-018-101-099

06-01436-C

CHILD PARCEL: --SAME--

STARTING POINT: S.L. 102 IN CENTER GATE MILLS SUB NO. 2 P.V. 32 P. 46-48

# REARAGE CHANGE MAP CORR. ONLY



## SPLITS/DEEDS PROCESSED

LORAIN COUNTY TAX MAP DEPARTMENT  
226 MIDDLE AVE. ELYRIA, OHIO

SURVEYED BY: N/A

CLOSURE: N/A

MAP PAGE(S): 07-00-018-D

APPROVED BY: DRH DATE: 2/27/2007

SCALE: 1" = 100' PRIOR INSTRUMENT: