

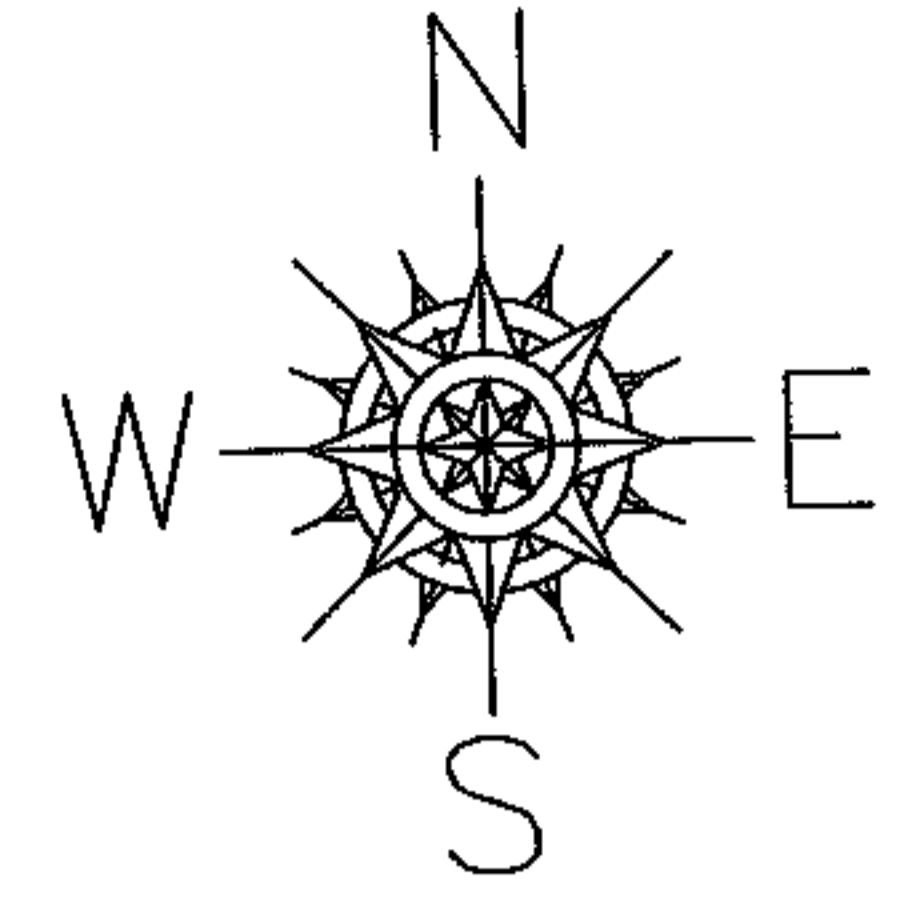
RASTER

PARENT PARCEL: 06-24-138-000-001, -003

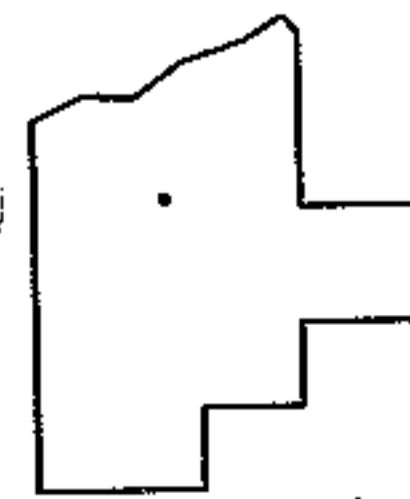
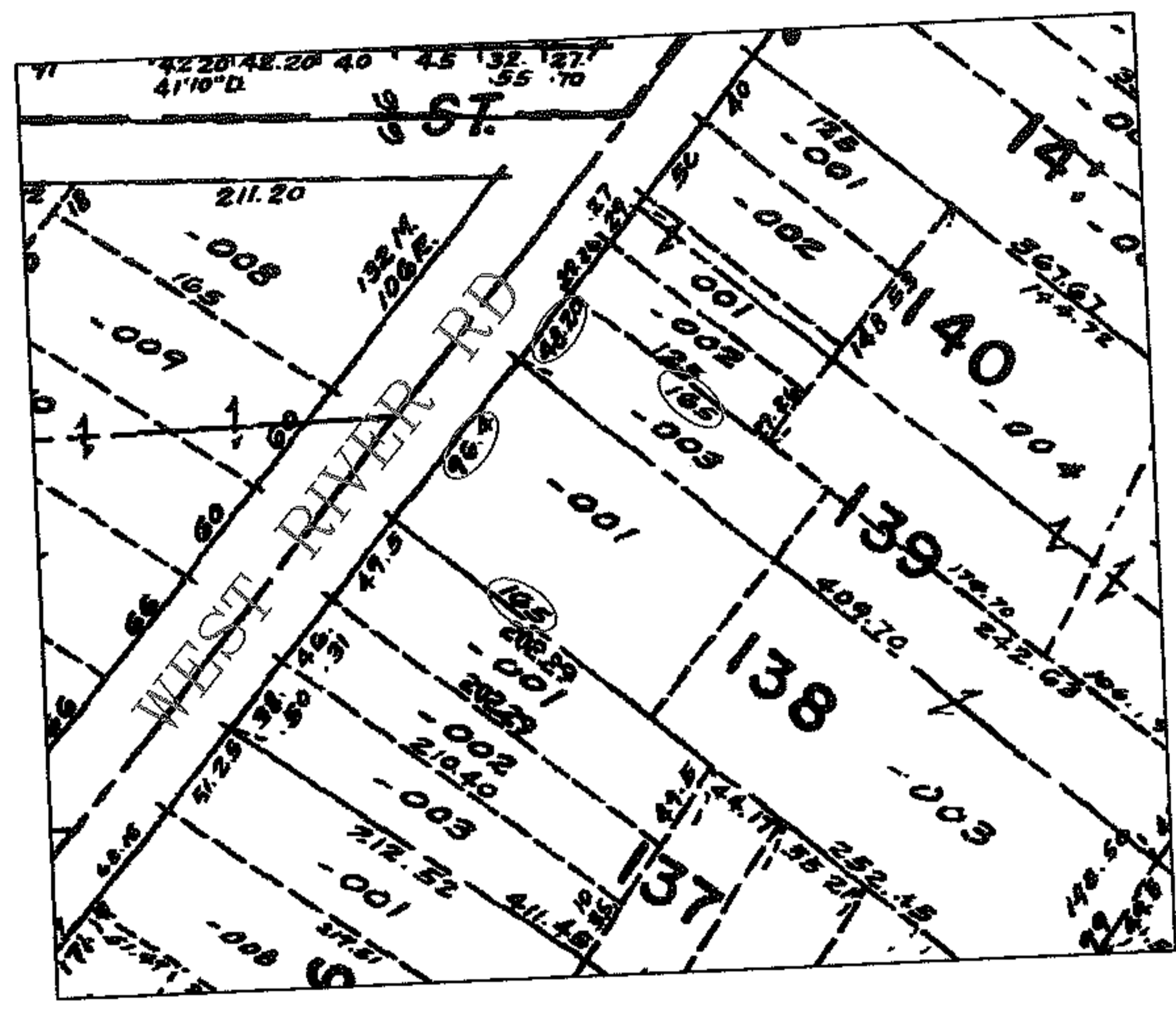
CHILD PARCEL: --SAME--

STARTING POINT: SE LINE OF WEST RIVER AND W CORNER OF O.L. 138

06-01435-C



FRONTAGE AND DEPTH CORR  
NO MAP CORRECTION



**SPLITS/DEEDS PROCESSED**  
LORAIN COUNTY TAX MAP DEPARTMENT  
226 MIDDLE AVE. ELYRIA, OHIO

SURVEYED BY: N/A  
CLOSURE: N/A  
MAP PAGE(S): 06-100  
APPROVED BY: DRH DATE: 12/4/2006  
SCALE: 1" = 200' PRIOR INSTRUMENT: