

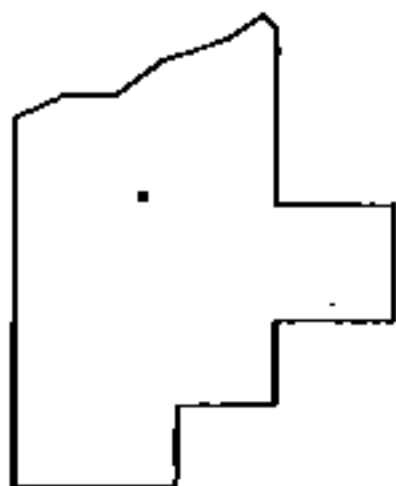
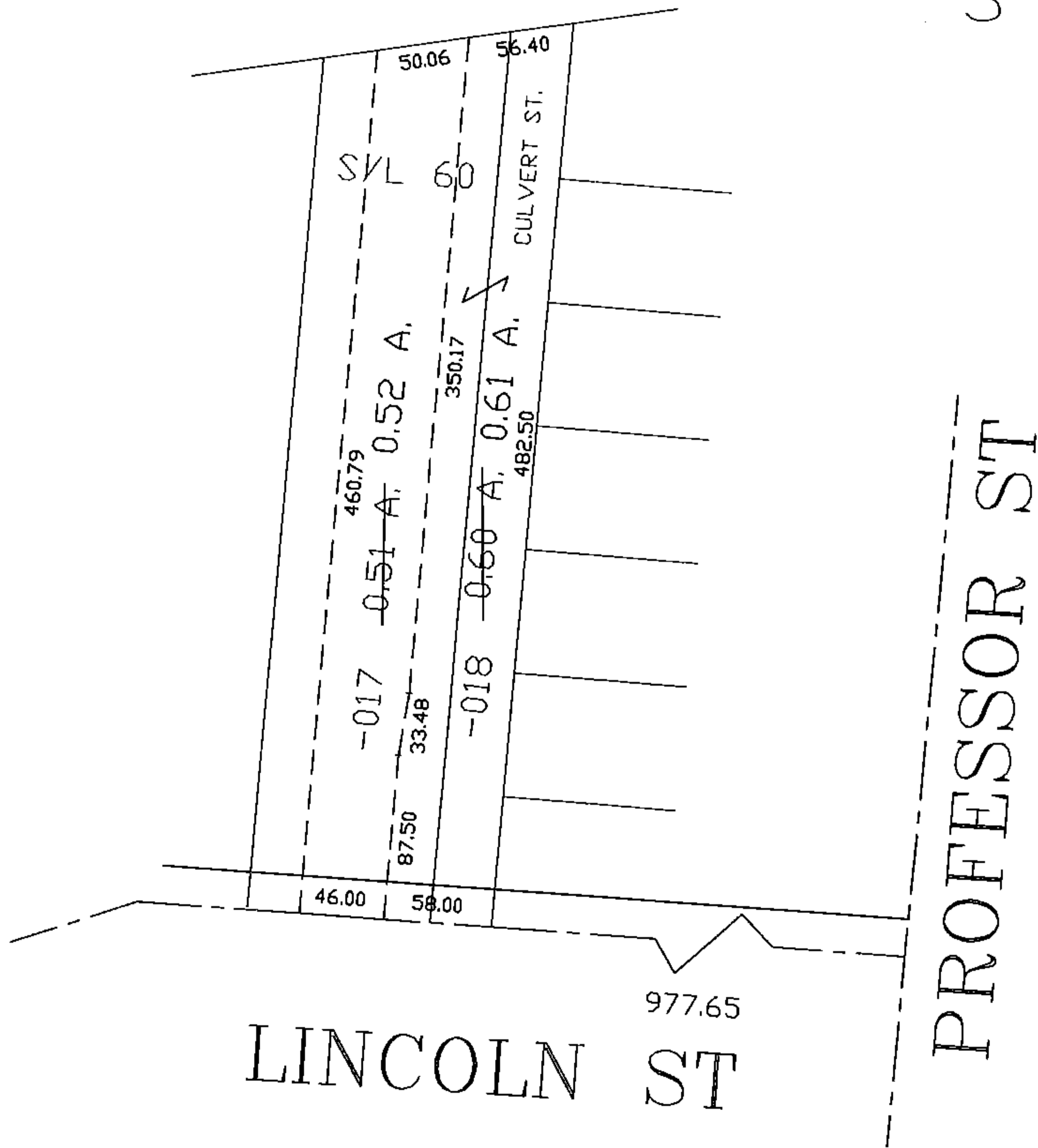
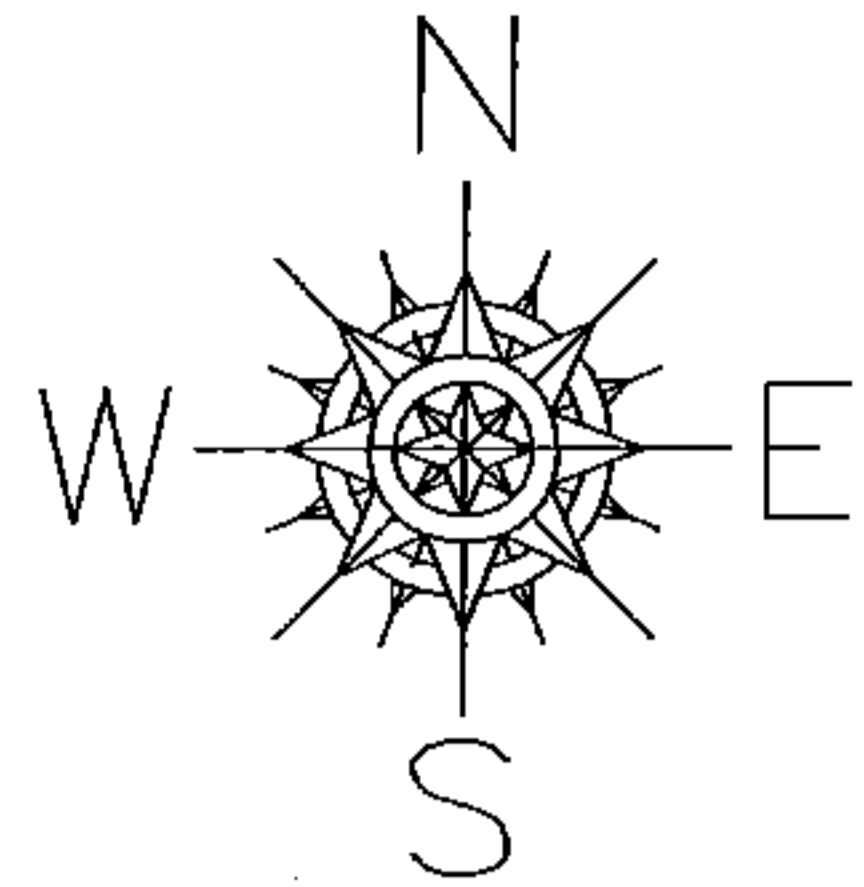
PARENT PARCEL: 09-00-095-102-017, -018

CHILD PARCEL: --SAME--

STARTING POINT: INT CL PROFESSOR ST AND LINCOLN ST

06-01428-D

AC. CORRS.
PER SURVEY
EDWARD P. DUDLEY



SPLITS/DEEDS PROCESSED

LORAIN COUNTY TAX MAP DEPARTMENT
226 MIDDLE AVE. ELYRIA, OHIO

SURVEYED BY: EDWARD P. DUDLEY
 CLOSURE: 1:10.000
 MAP PAGE(S): 09-00-095-A
 APPROVED BY: DRH DATE: 11/29/2006
 SCALE: 1"= 100 PRIOR INSTRUMENT: 20030957511