

RASTER

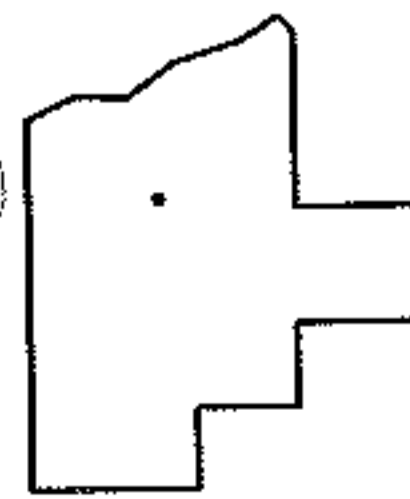
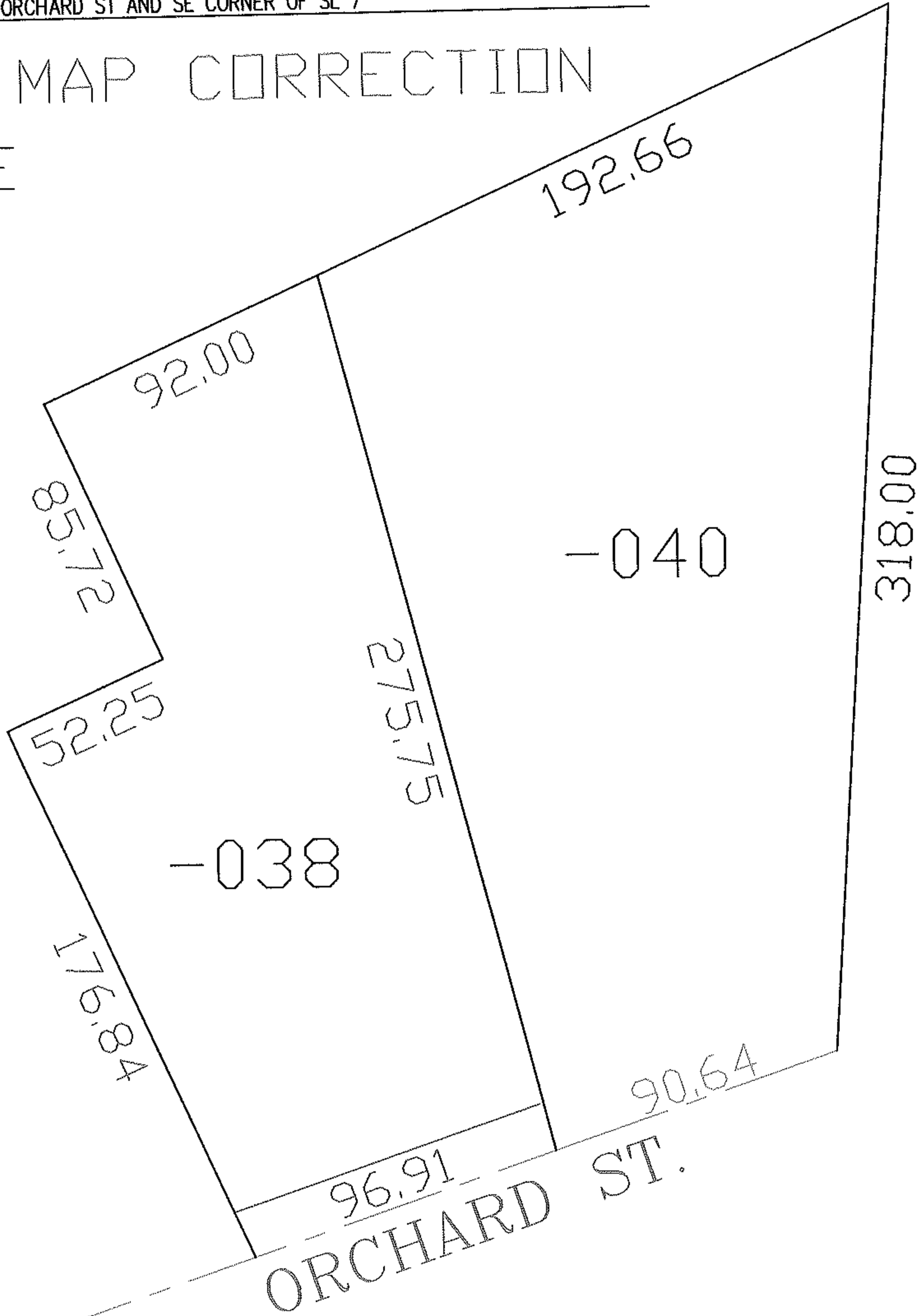
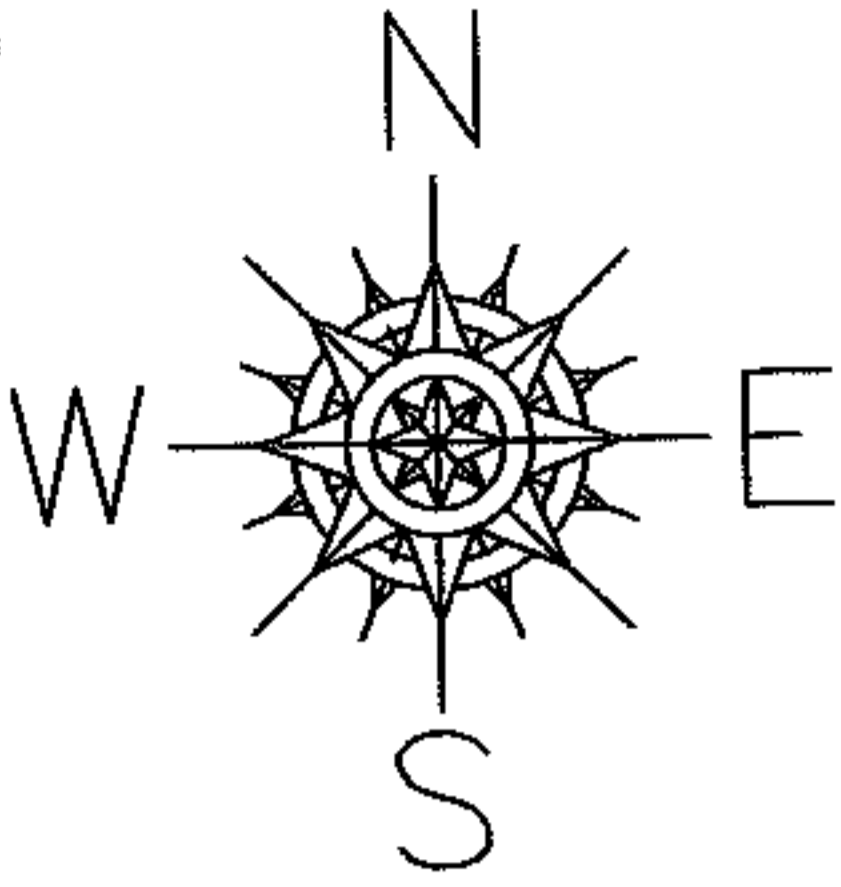
PARENT PARCEL: 04-00-010-117-038

06-01420-A

CHILD PARCEL: --SAME--

STARTING POINT: INT CL ORCHARD ST AND SE CORNER OF SL 7

MAP CORRECTION



SPLITS/DEEDS PROCESSED

LORAIN COUNTY TAX MAP DEPARTMENT
226 MIDDLE AVE. ELYRIA, OHIO

SURVEYED BY: CHRISTOPHER M. HIRZEL

CLOSURE: 1:10,000

MAP PAGE(S): 04-00-010-G

APPROVED BY: DRH DATE: 11/1/2006

SCALE: 1" = 100 PRIOR INSTRUMENT: 20030918779