

RASTER

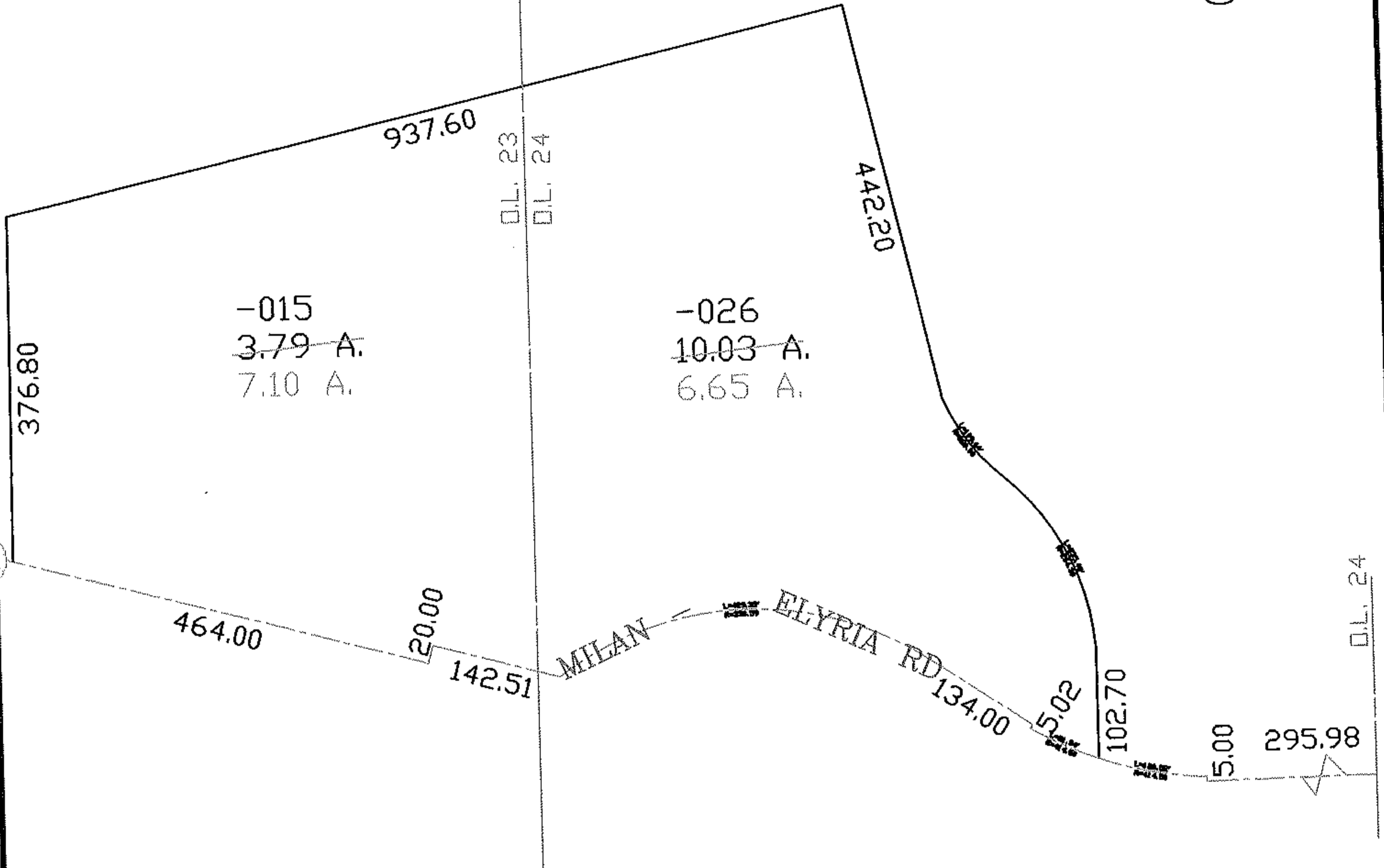
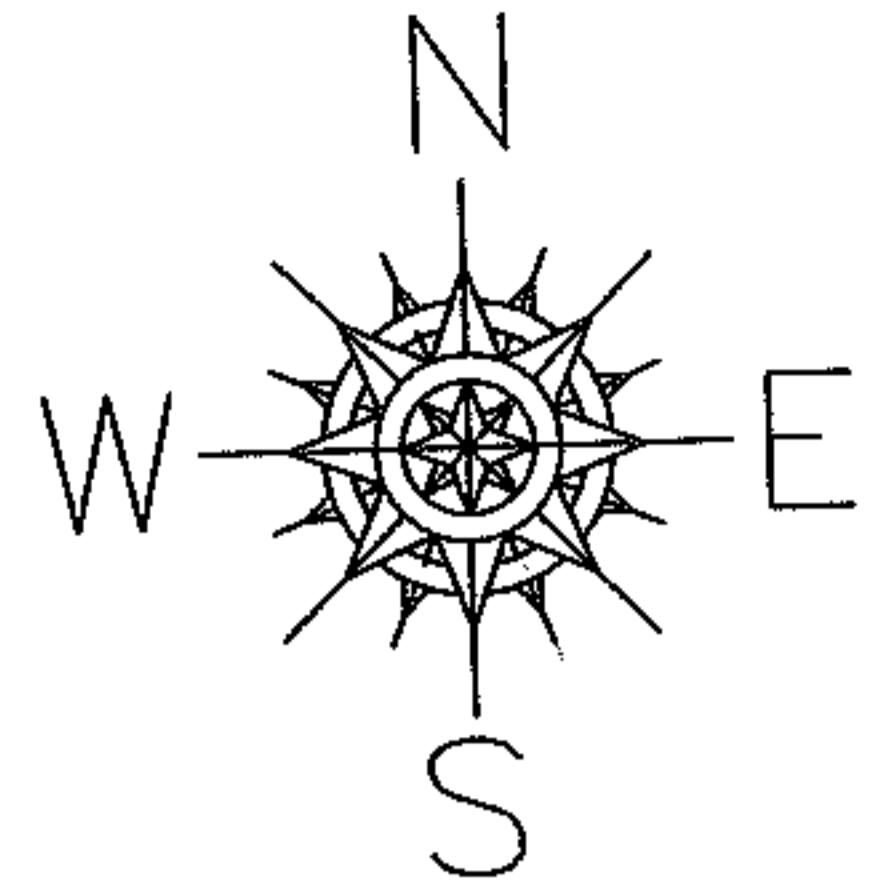
PARENT PARCEL: 06-24-023-104-015, 06-24-024-109-026

06-01416-C

CHILD PARCEL: --SAME--

STARTING POINT: INT CL MILAN ELYRIA RD AND EAST LINE OF O.L. 24

AC. CORR.
PER SURVEY
KENNETH BOHNING



-015
3.79 A.
7.10 A.

-026
10.03 A.
6.65 A.

442.20

464.00

20.00

142.51

MILAN

ELYRIA RD

134.00

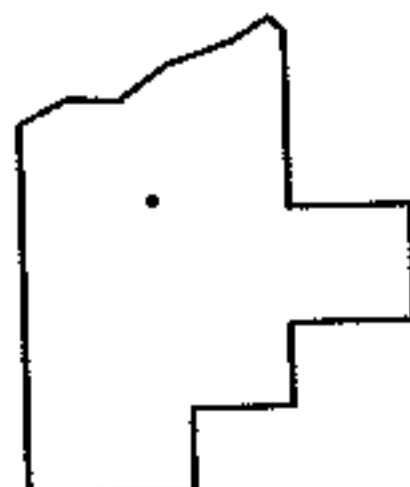
5.02

102.70

5.00

295.98

O.L. 24



SPLITS/DEEDS PROCESSED
LORAIN COUNTY TAX MAP DEPARTMENT
226 MIDDLE AVE. ELYRIA, OHIO

SURVEYED BY: KENNETH L. BOHNING

CLOSURE: 1:10,000

MAP PAGE(S): ~~06-095~~ 06-095

APPROVED BY: DRH DATE: 12/20/2006

SCALE: 1" = 200 PRIOR INSTRUMENT: OR 221/345