

RASTER

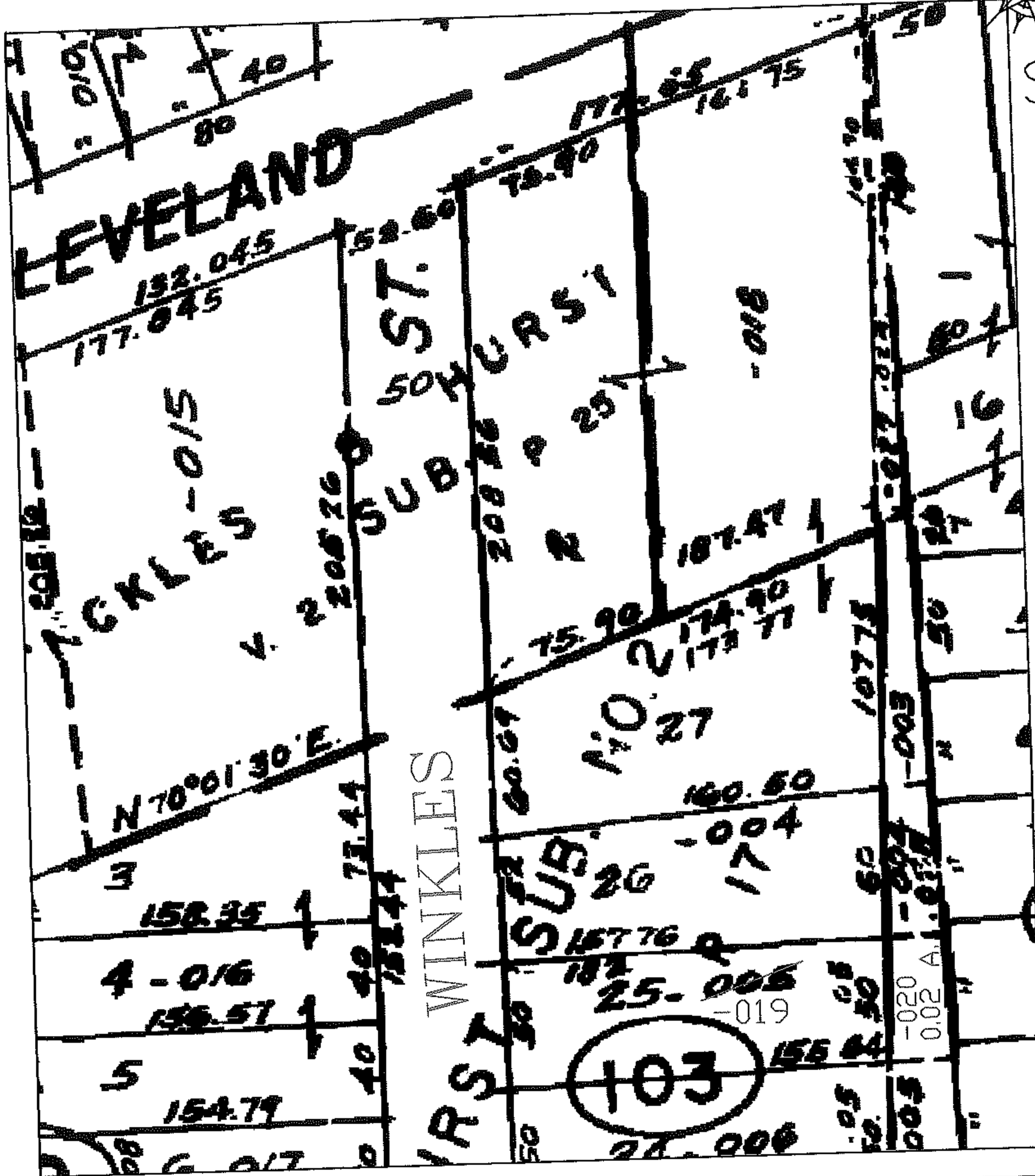
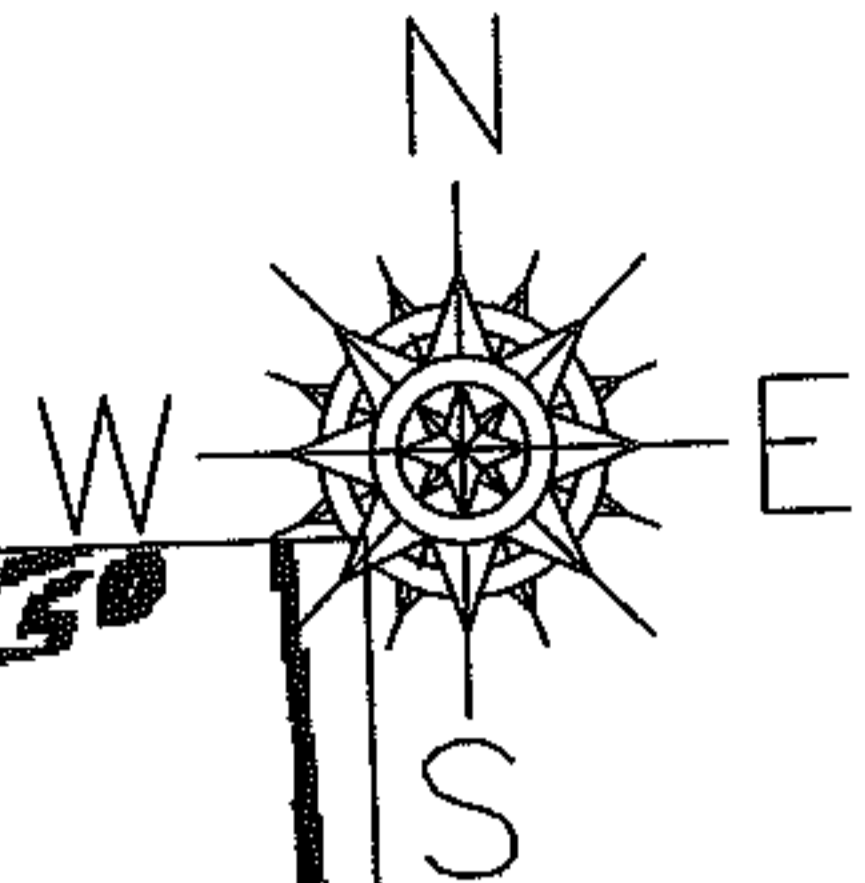
PARENT PARCEL: 06-25-016-103-005

CHILD PARCEL: 06-25-016-103-019 & -020

STARTING POINT: INT CL CLEVELAND ST AND WINKLES ST

06-01410-U

UNCOMBINATION PER DEED



SPLITS/DEEDS PROCESSED

LORAIN COUNTY TAX MAP DEPARTMENT  
226 MIDDLE AVE. ELYRIA, OHIO

SURVEYED BY: N/A

CLOSURE: N/A

MAP PAGE(S): 6-105

APPROVED BY: DRH DATE: XX/XX/XX

SCALE: 1" = 100 PRIOR INSTRUMENT: 2005079449