

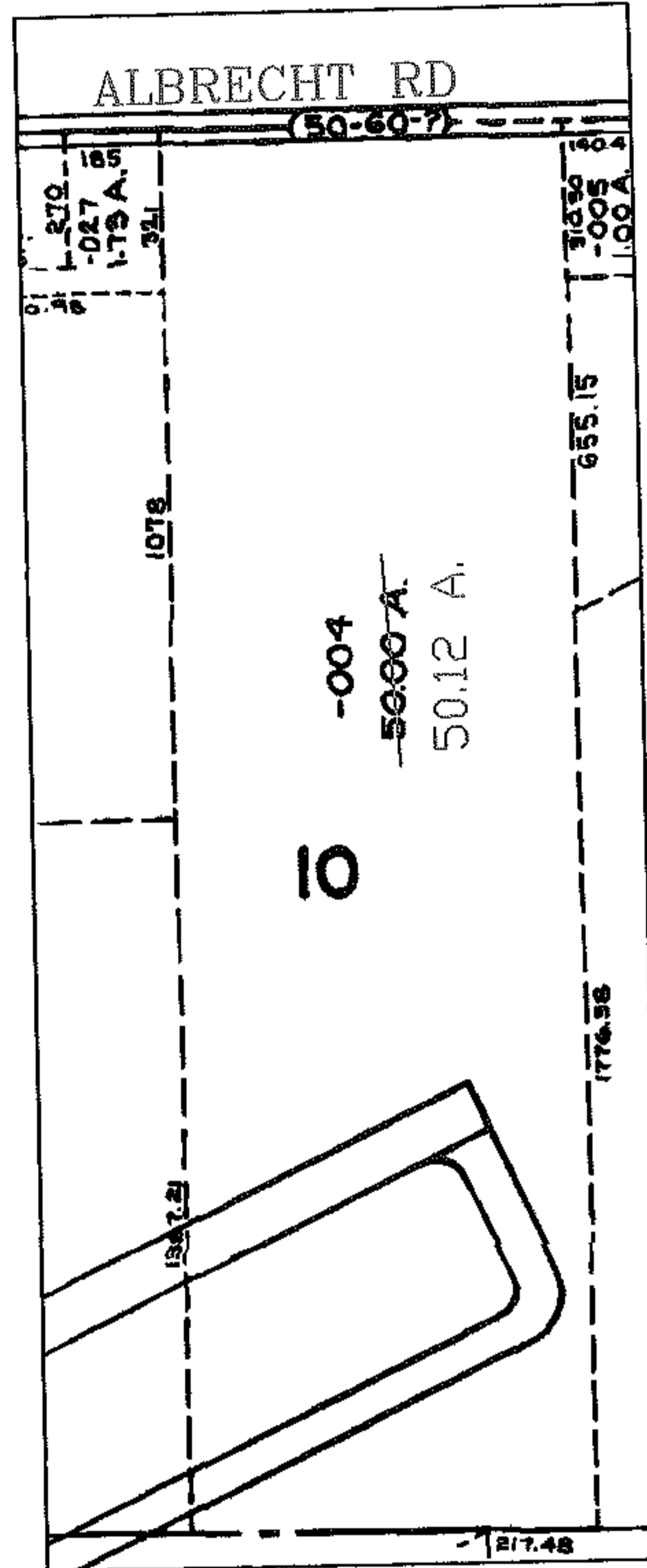
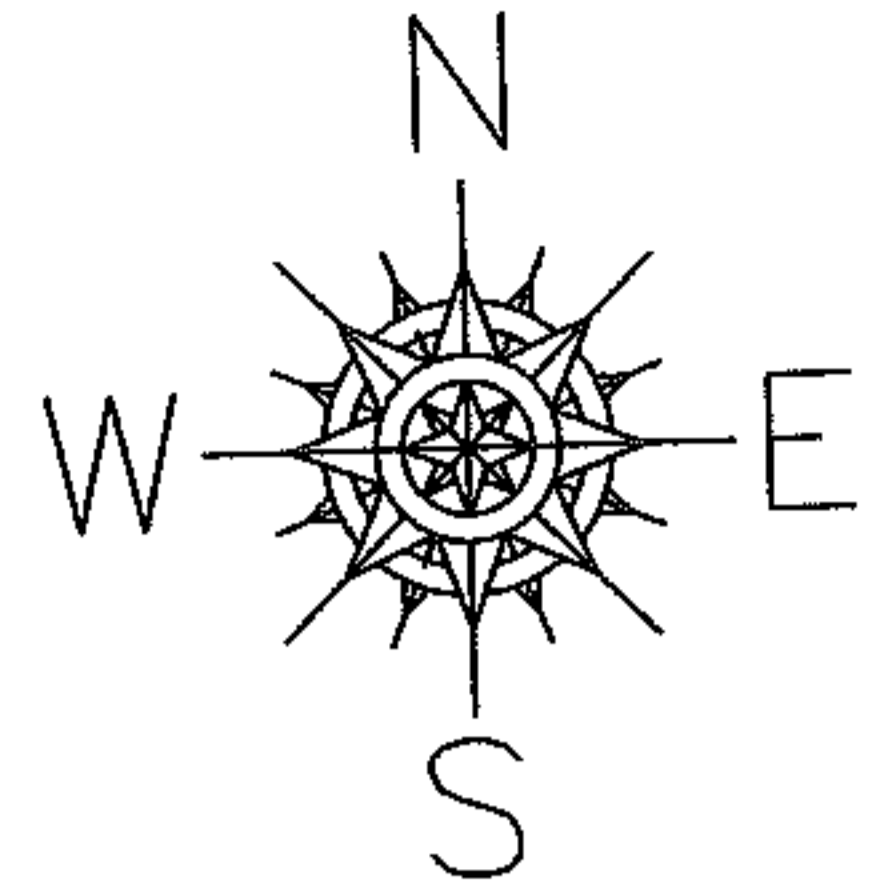
PARENT PARCEL: 09-00-010-000-004

06-01397-A

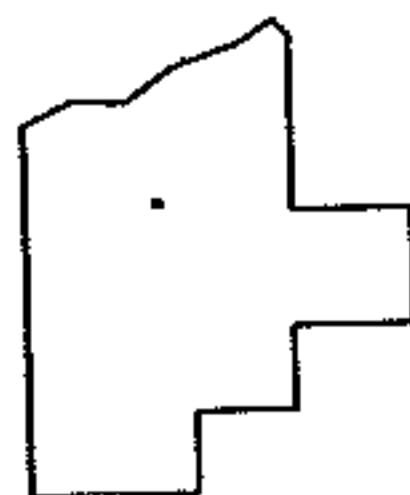
CHILD PARCEL: --SAME--

STARTING POINT:

AC. CORR.
PER DEED



PAGE 1 OF 2



SPLITS/DEEDS PROCESSED
LORAIN COUNTY TAX MAP DEPARTMENT
226 MIDDLE AVE. ELYRIA, OHIO

SURVEYED BY: N/A
CLOSURE: N/A
MAP PAGE(S): 9-D
APPROVED BY: DRH DATE: 9/5/2006
SCALE: 1" = 200 PRIOR INSTRUMENT: DV 946/35