

MASTER

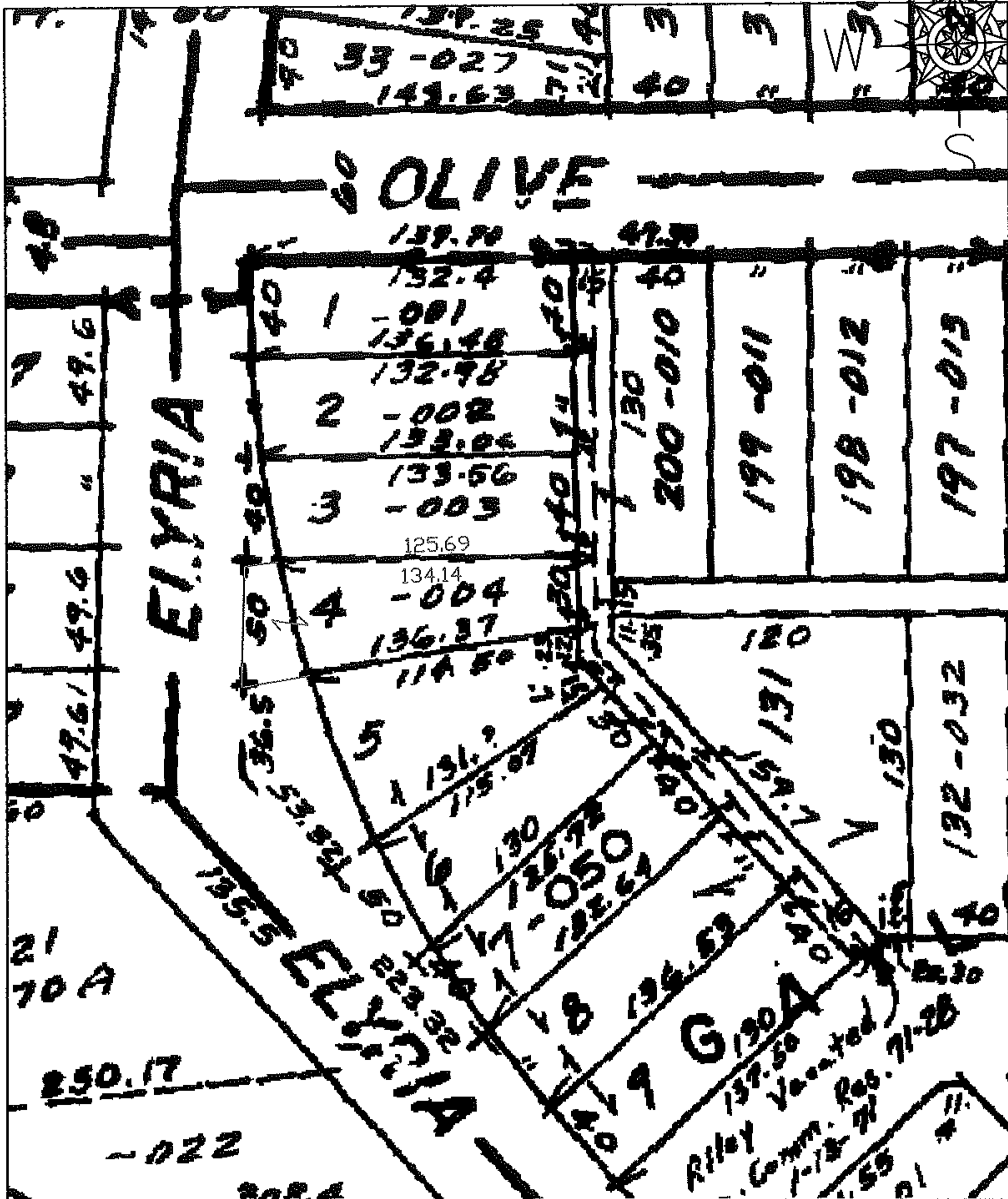
PARENT PARCEL: 03-00-103-121-004

CHILD PARCEL: --SAME--

STARTING POINT:

MAP CORRECTION DEED NEVER RECORDED FOR SPLITTING OF -004

06-01393-D



SPLITS/DEEDS PROCESSED

LORAIN COUNTY TAX MAP DEPARTMENT
226 MIDDLE AVE. ELYRIA, OHIO

SURVEYED BY: N/A

CLOSURE: N/A

MAP PAGE(S): 03-00-103-A

APPROVED BY: DRH DATE: 9/1/2006

SCALE: 1" = 100 PRIOR INSTRUMENT: 20030971077