

RASTER

PARENT PARCEL: 06-26-075-000-006

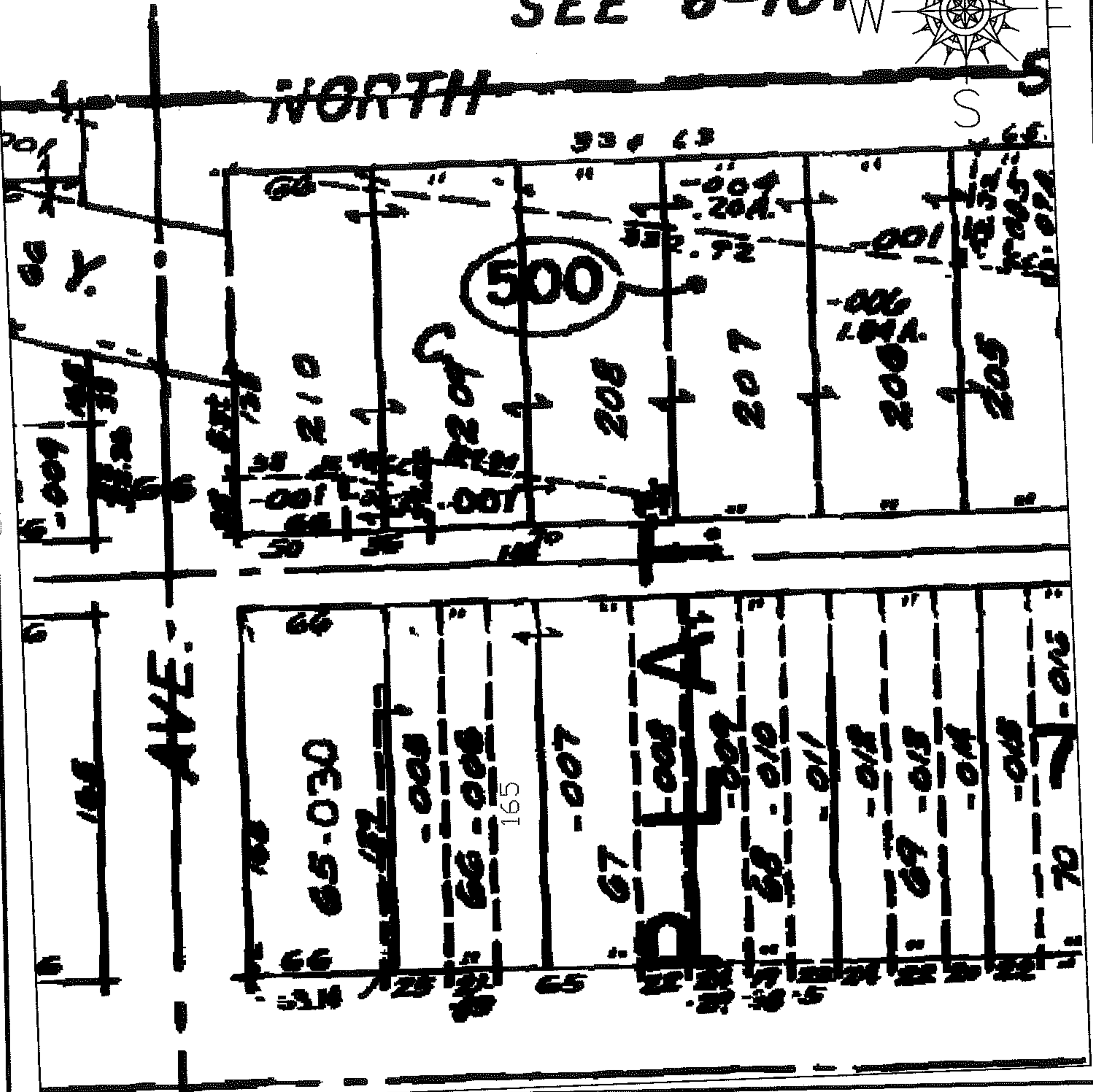
06-01388-C

CHILD PARCEL: --SAME--

STARTING POINT: SUBLOT 66 IN HEMAN ELY'S ORIGINAL PLAT V.3 P.14

DUP CORRECTION
NO MAP CORRECTION

SEE 6-101 W



SPLITS/DEEDS PROCESSED

LORAIN COUNTY TAX MAP DEPARTMENT
226 MIDDLE AVE. ELYRIA, OHIO

SURVEYED BY: N/A

CLOSURE: N/A

MAP PAGE(S): 06-119

APPROVED BY: DRH DATE: 8/17/2006

SCALE: 1"=100 PRIOR INSTRUMENT: 20050109773