

RASTER

PARENT PARCEL: 02-01-003-128-001

CHILD PARCEL: --SAME--

STARTING POINT: CORNER OF W 12TH ST AND LEXINGTON AVE

06-01386-Z

DEPTH CORR PER DEED
NO MAP CHANGE

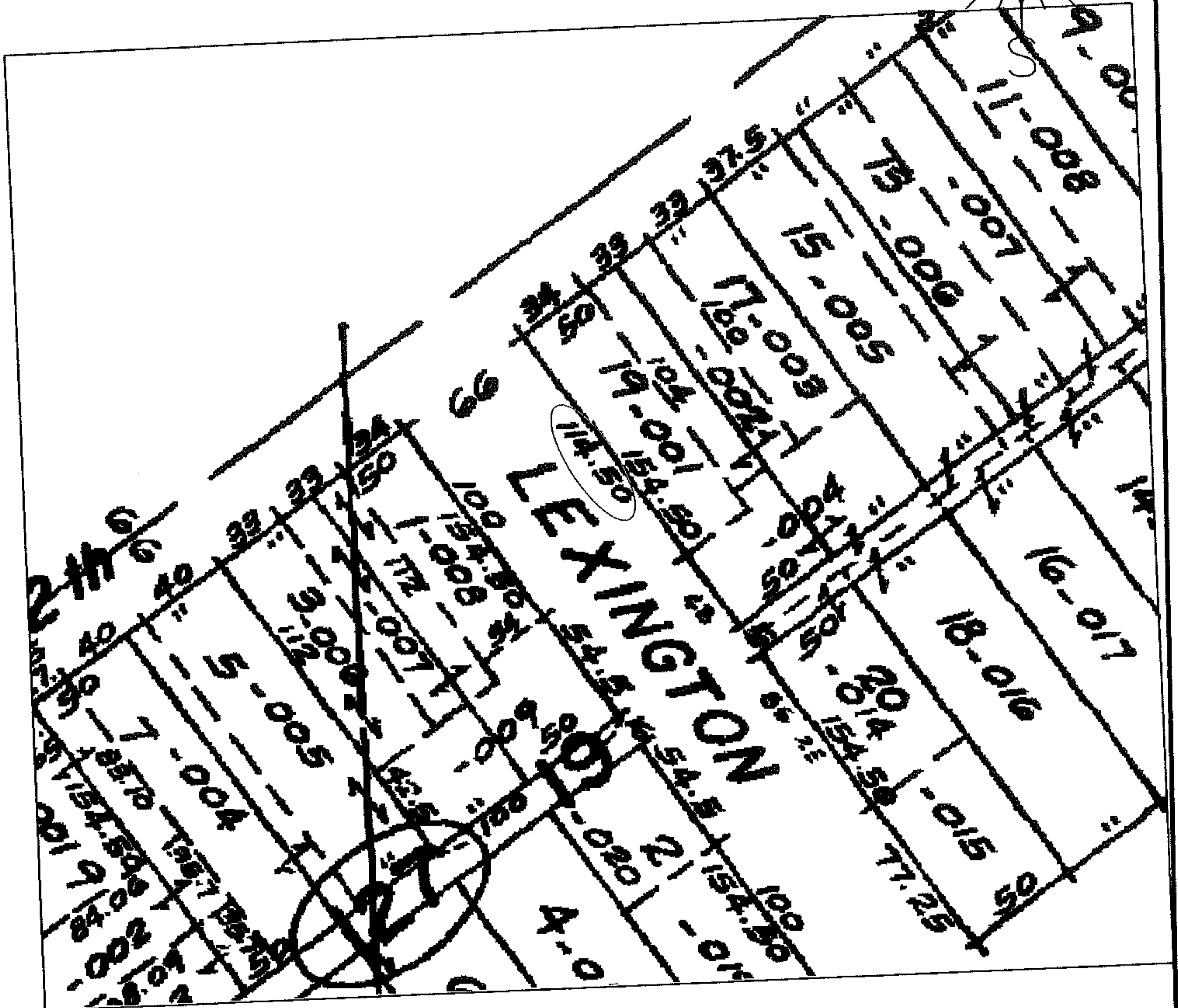
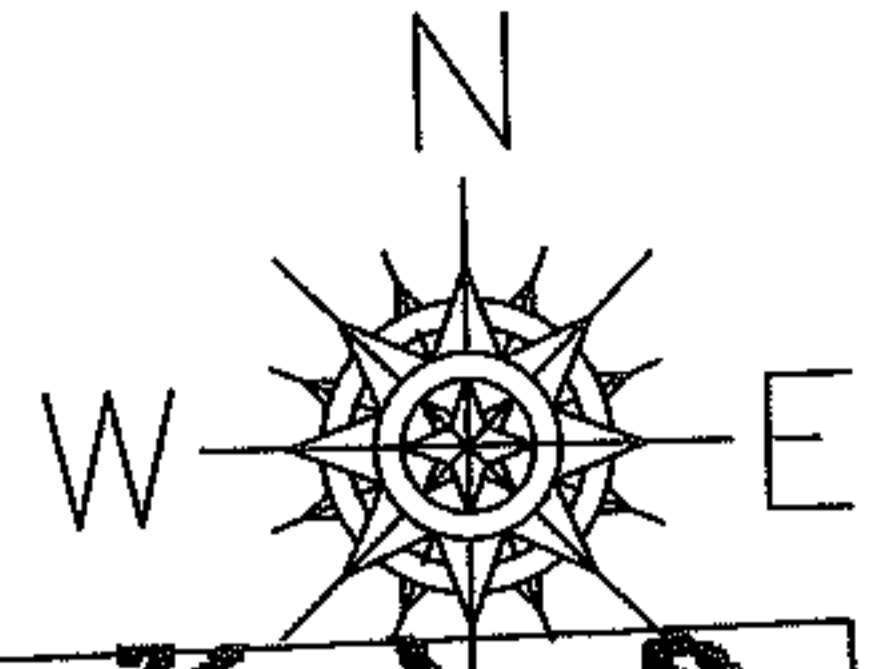
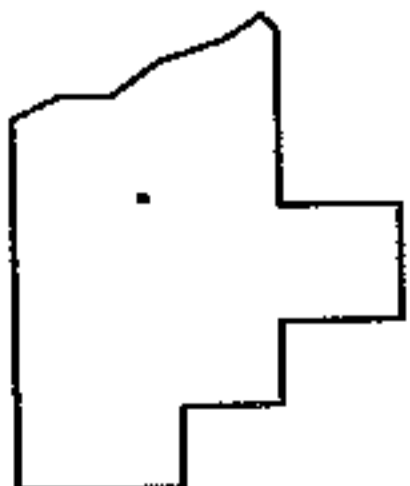


IMAGE NOT TO SCALE



SPLITS/DEEDS PROCESSED

LORAIN COUNTY TAX MAP DEPARTMENT
226 MIDDLE AVE. ELYRIA, OHIO

SURVEYED BY: N/A

CLOSURE: N/A

MAP PAGE(S): 02-01-003-E

APPROVED BY: DRH DATE: 8/14/2006

SCALE: 1" = 100 PRIOR INSTRUMENT: DV XXXX/XXX