

RASTER

PARENT PARCEL: 18-00-029-000-053 & -054

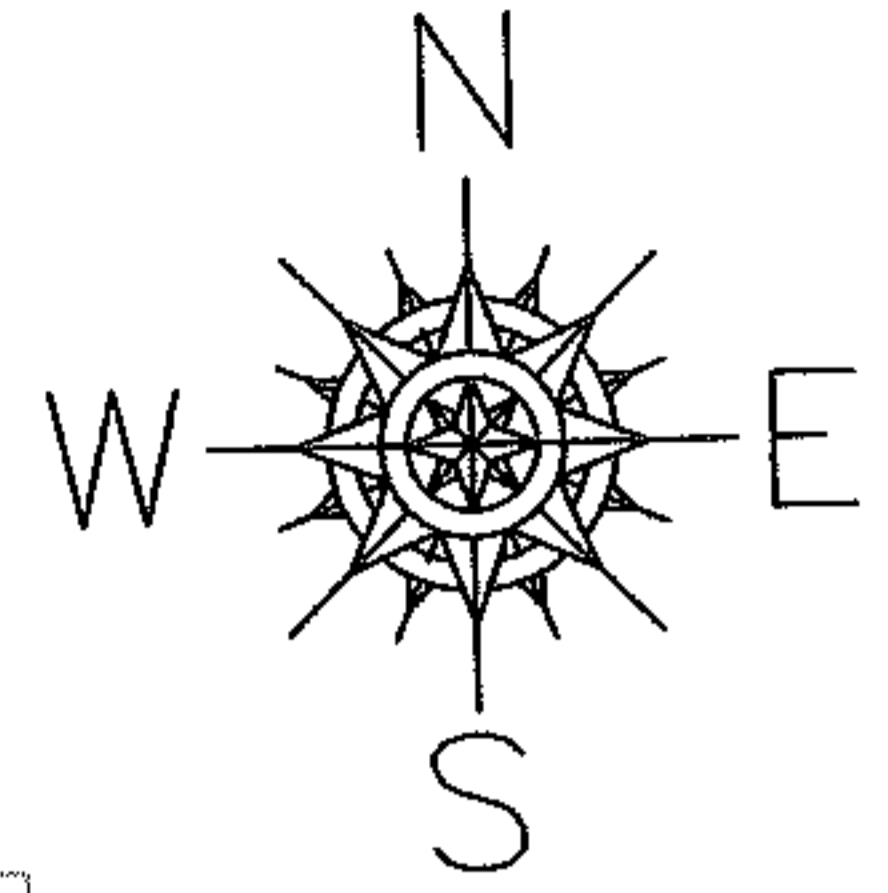
CHILD PARCEL: 18-00-029-000-102 & -103

STARTING POINT: XXXXXX

NO. 06-01381-C

CERTIFICATE OF CORRECTION

18-00-029-000-053 & -054
SHOULD HAVE GONE INTO THE
WELLINGTON COMMONS SUBDIVISION PLAT
VOL. 89 PG. 6-7
STREET PARCEL# 18-00-029-900-002

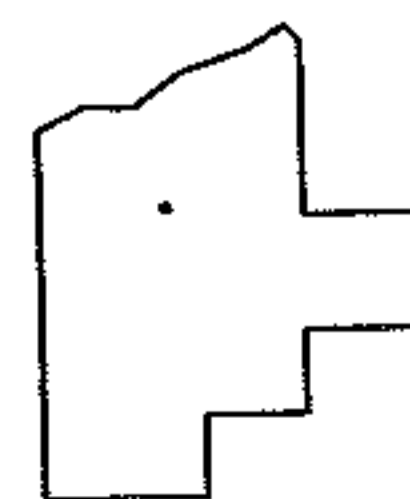
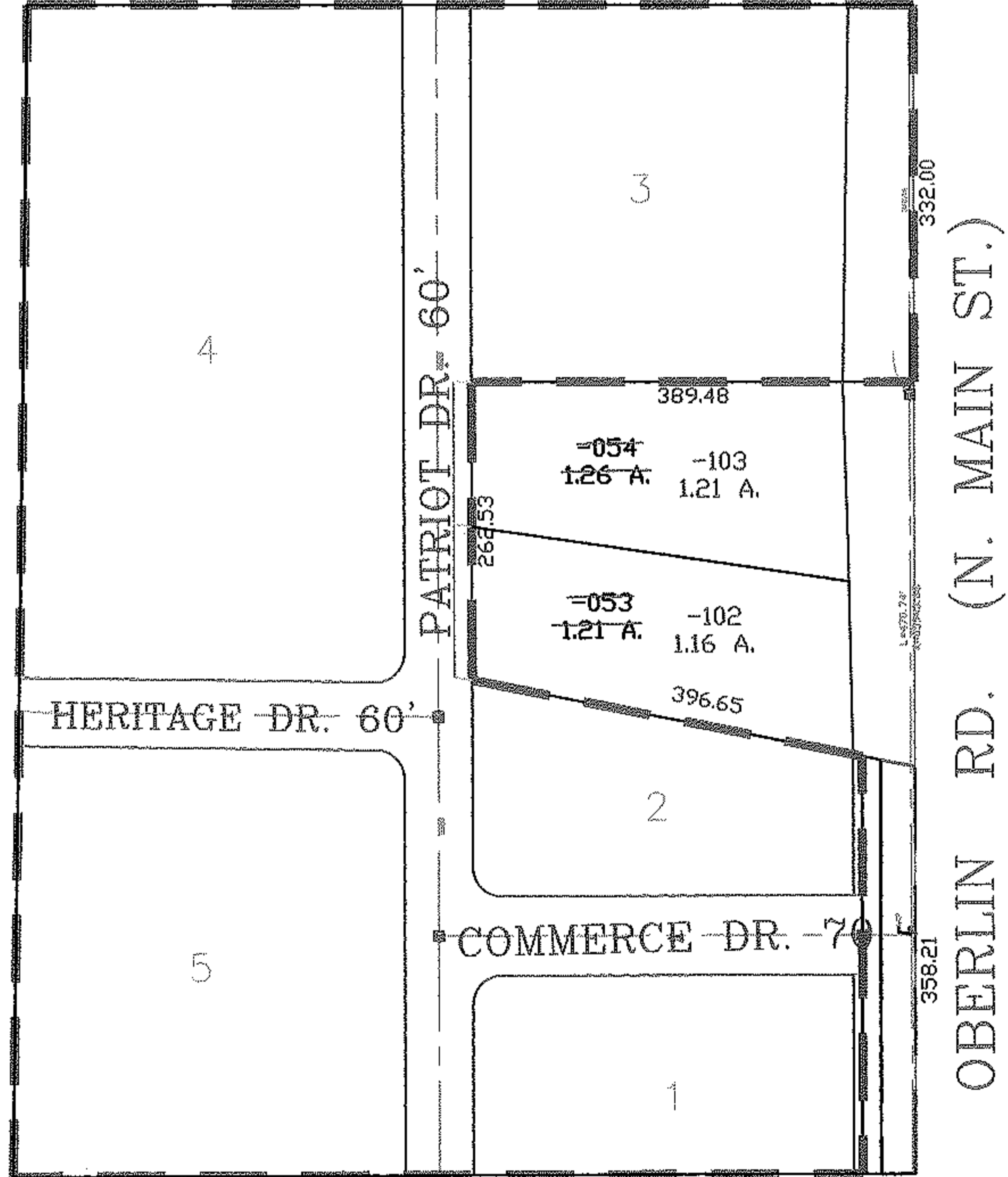


DROP FROM DUPLICATE

18-00-029-000-053
1.21 A.
&
18-00-029-000-054
1.26 A.

ADD TO DUPLICATE

18-00-029-000-102
1.16 A.
&
18-00-029-000-103
1.21 A.



SPLITS/DEEDS PROCESSED
LORAIN COUNTY TAX MAP DEPARTMENT
226 MIDDLE AVE. ELYRIA, OHIO

SURVEYED BY: CHRISTOPHER M. HIRZEL
CLOSURE: NONE
MAP PAGE(S): 18-00-029-D
APPROVED BY: TJS DATE: 8/18/06
SCALE: 1" = 200 PRIOR INSTRUMENT: PV 89/6-7