

RASTER

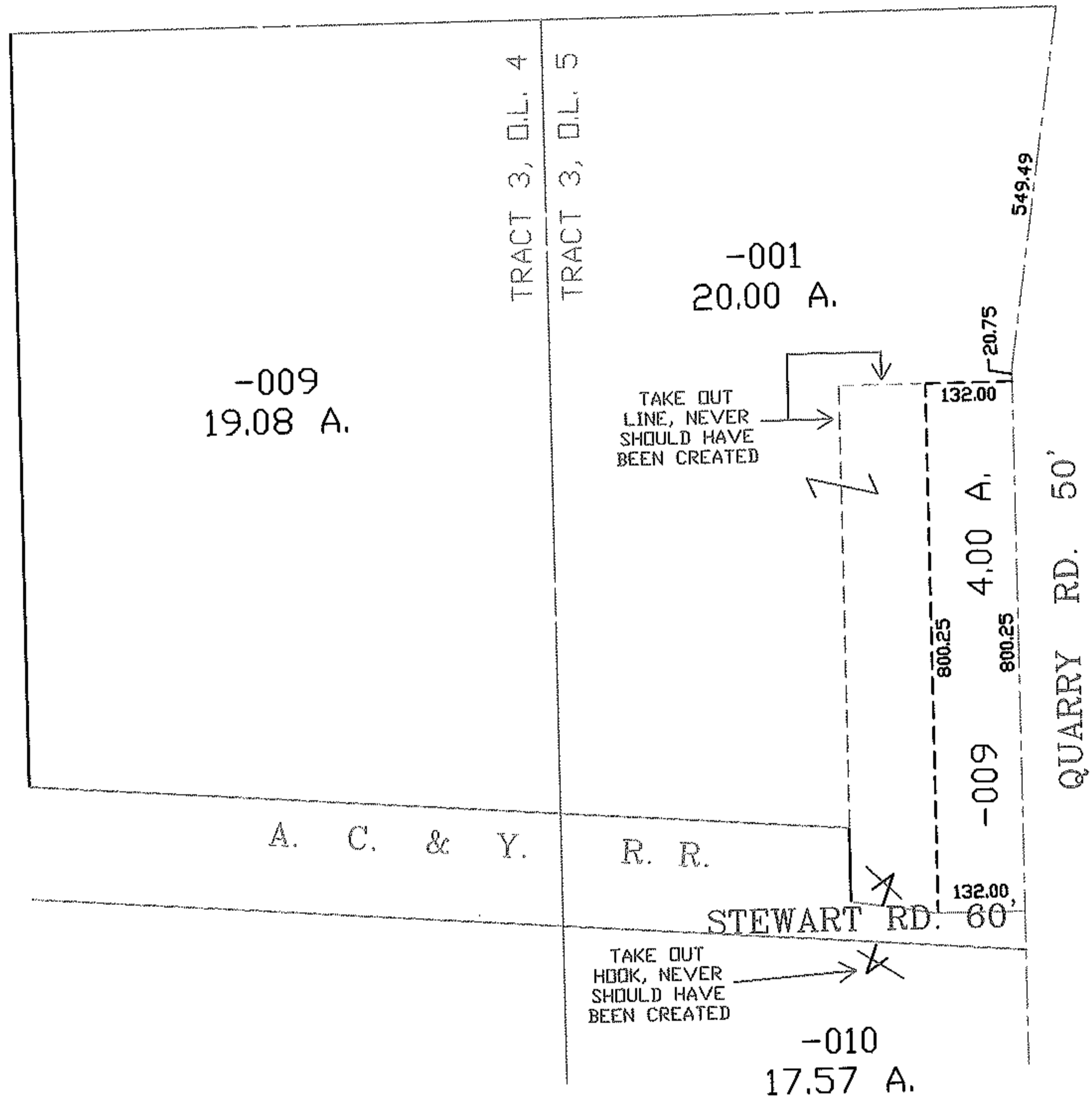
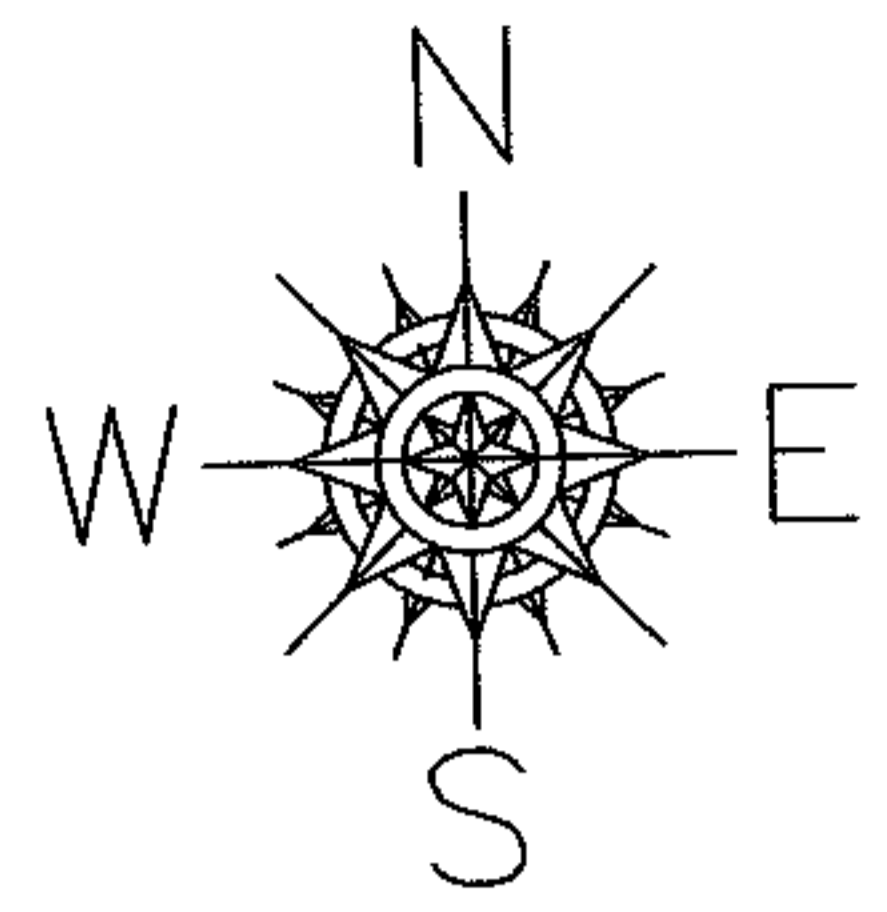
PARENT PARCEL: XX-XX-XXX-XXX-XXX

CHILD PARCEL: XX-XX-XXX-XXX-XXX

STARTING POINT: XXXXXX

NO. 06-01374-C

# MAP CORRECTION



## SPLITS/DEEDS PROCESSED

LORAIN COUNTY TAX MAP DEPARTMENT  
226 MIDDLE AVE. ELYRIA, OHIO

SURVEYED BY: XXXXXXXXXXXX

CLOSURE: CAN'T RUN CLOSURE

MAP PAGE(S): 20-H

APPROVED BY: TJS DATE: 7/18/06

SCALE: 1" = 300 PRIOR INSTRUMENT: DV 1253/302