

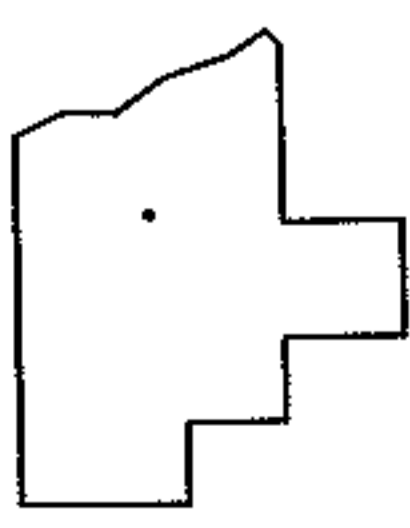
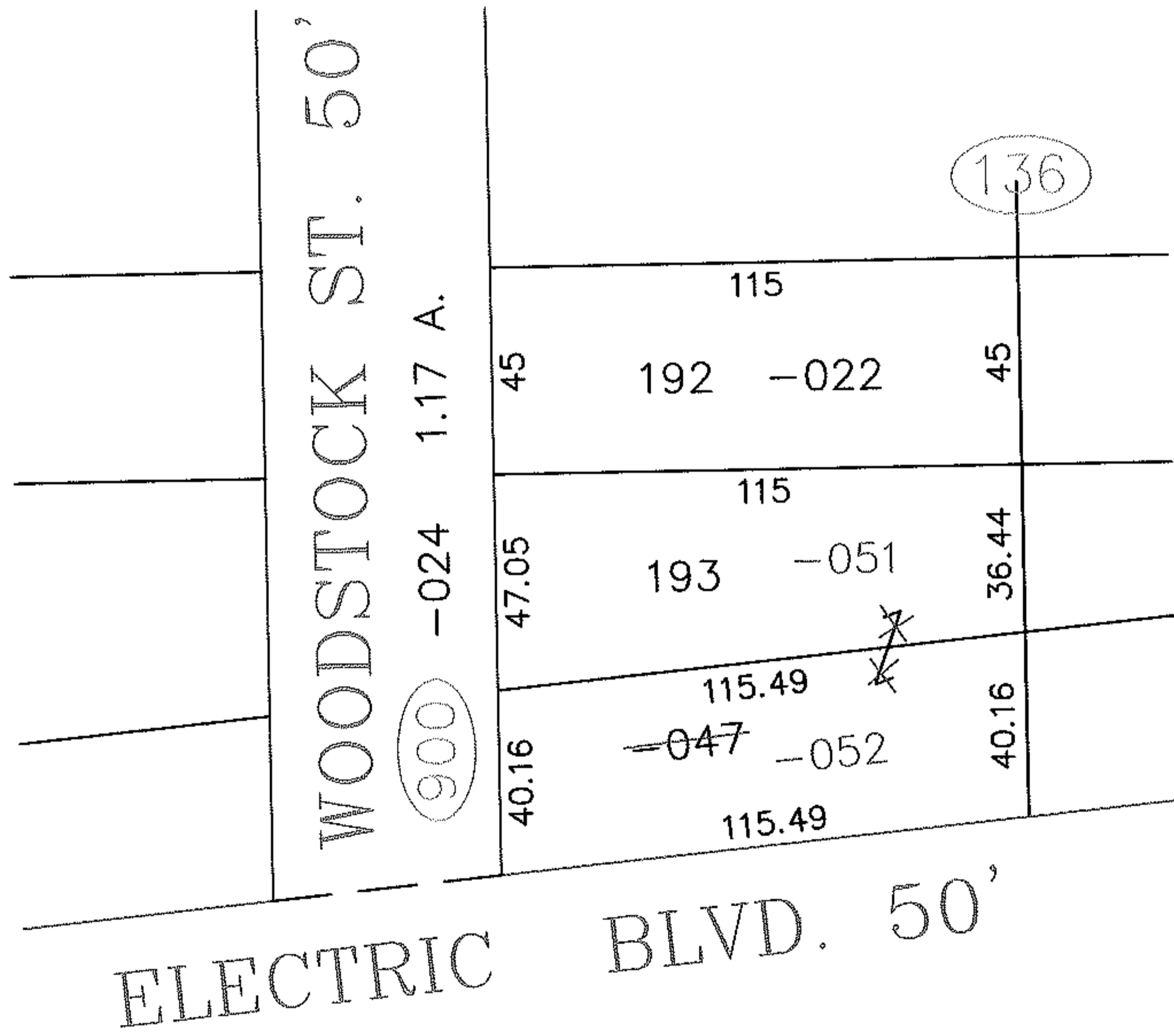
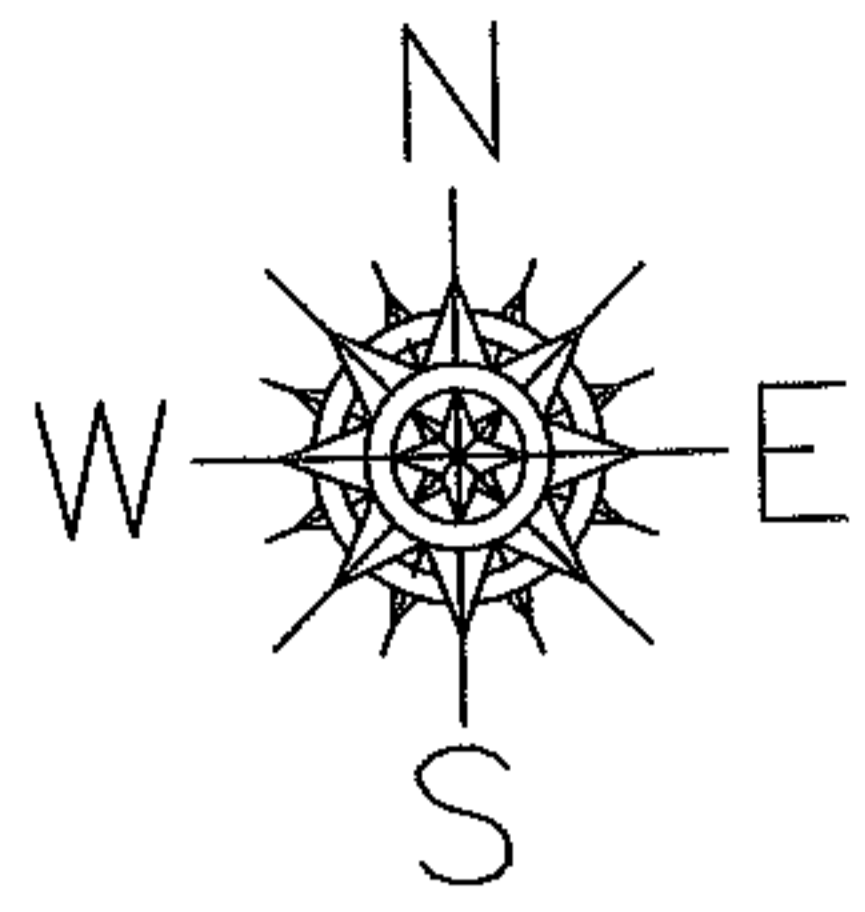
RASTER

PARENT PARCEL: 04-00-018-136-047  
CHILD PARCEL: 04-00-018-136-051 & -052  
STARTING POINT: S.W. CORNER OF S\L 193 IN AVON LAKE SUBDIVISION

06-01367-U

# UNCOMBINATION

~~04-00-018-136-047~~  
~~87.21 X 115.49~~  
04-00-018-136-051  
47.05 X 115.49  
04-00-018-136-052  
40.16 X 115.49



**SPLITS/DEEDS PROCESSED**  
LORAIN COUNTY TAX MAP DEPARTMENT  
226 MIDDLE AVE. ELYRIA, OHIO

SURVEYED BY: JOHN W. WARDEN  
CLOSURE: 0.00 : 10,000  
MAP PAGE(S): 04-00-018-C  
APPROVED BY: D. HOLLAND DATE: 7/17/2006  
SCALE: 1" = 50' PRIOR INSTRUMENT: 990625120