

RASTER

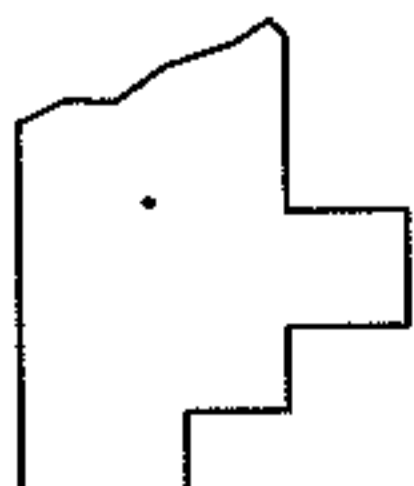
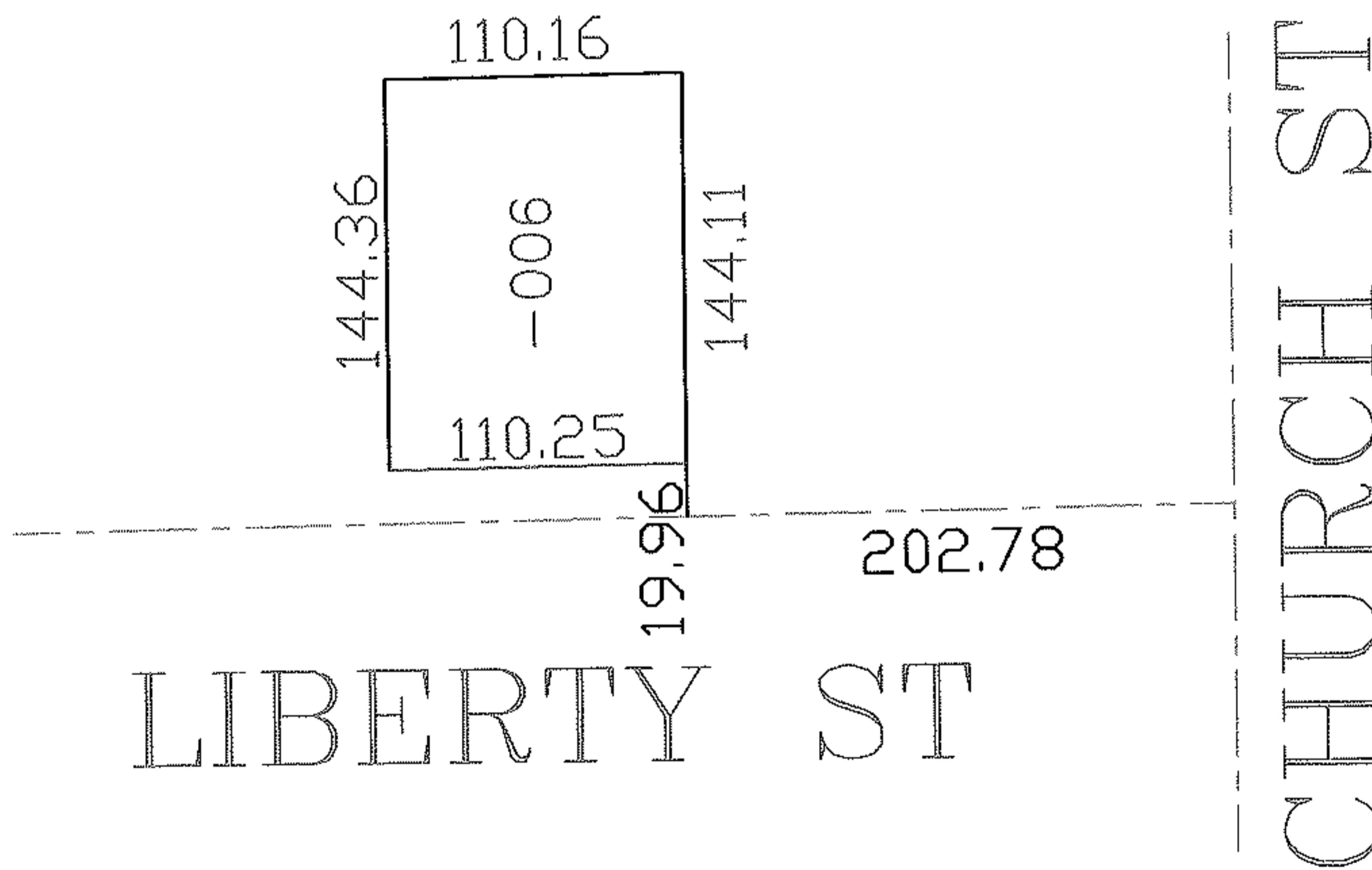
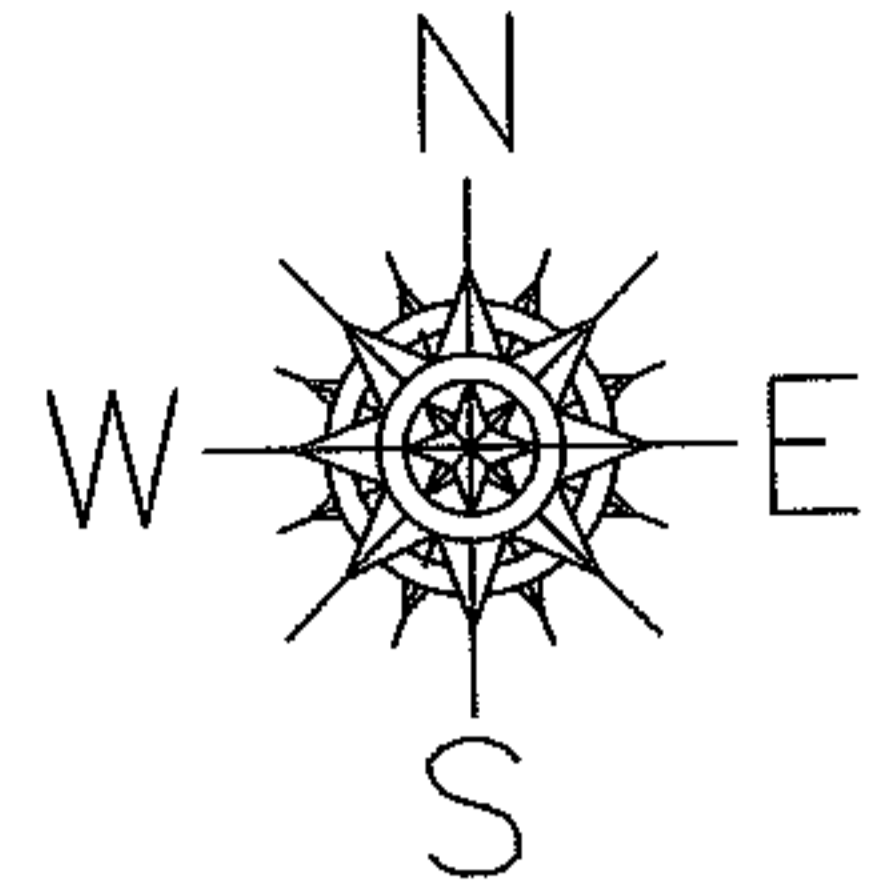
PARENT PARCEL: 15-00-046-103-006

06-01366-A

CHILD PARCEL: --SAME--

STARTING POINT: INT CL CHURCH ST AND LIBERTY ST

FRONTAGE AND DEPTH CORR
PER SURVEY
THOMAS SIMON



SPLITS/DEEDS PROCESSED

LORAIN COUNTY TAX MAP DEPARTMENT
226 MIDDLE AVE. ELYRIA, OHIO

SURVEYED BY: THOMAS A. SIMON

CLOSURE: 1:10,000

MAP PAGE(S): 15-00-046-A

APPROVED BY: DRH DATE: 7/17/06

SCALE: 1" = 100' PRIOR INSTRUMENT: 20020807375