

RASTER

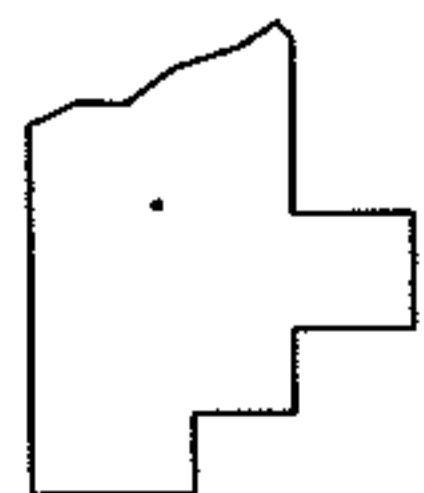
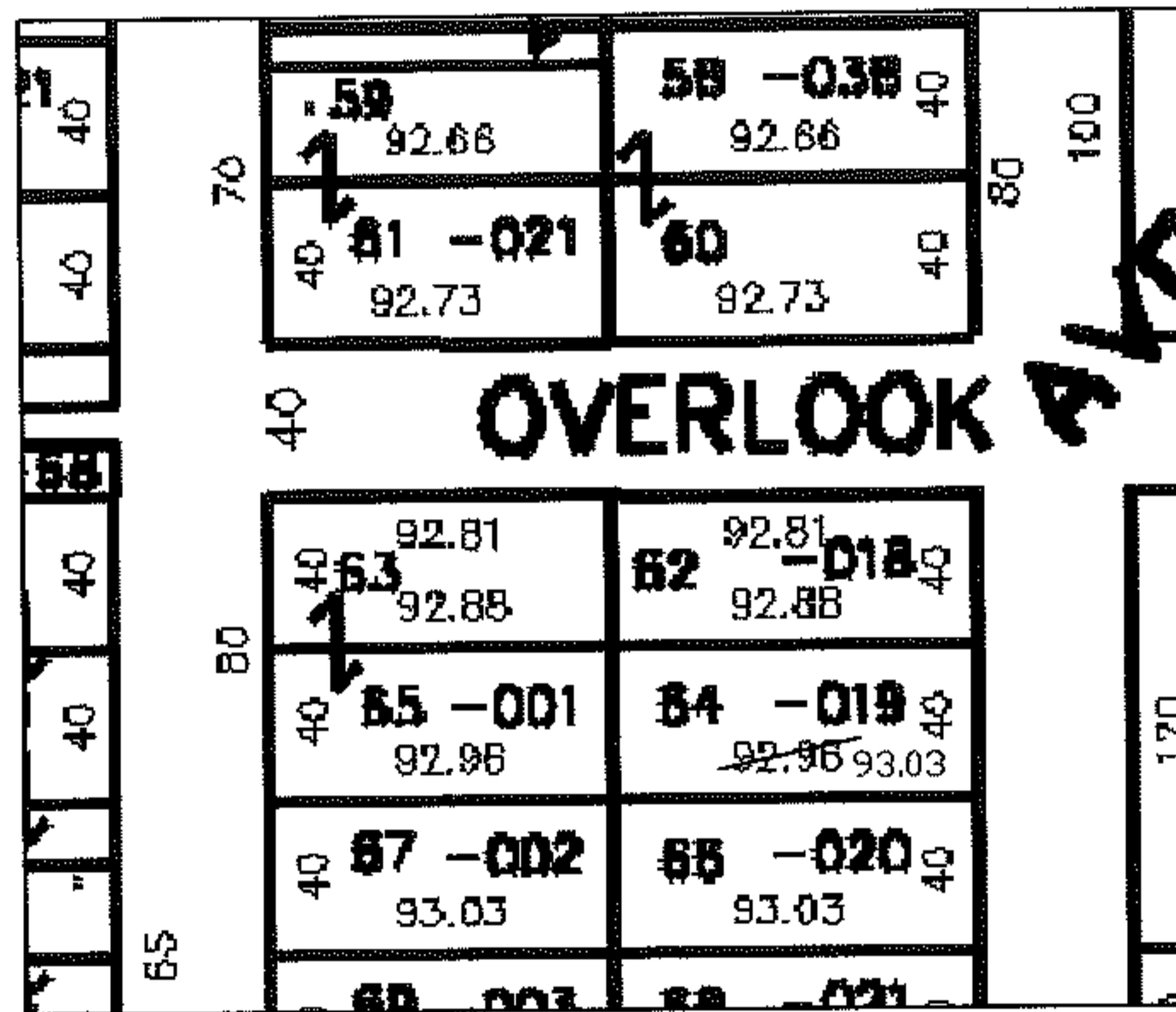
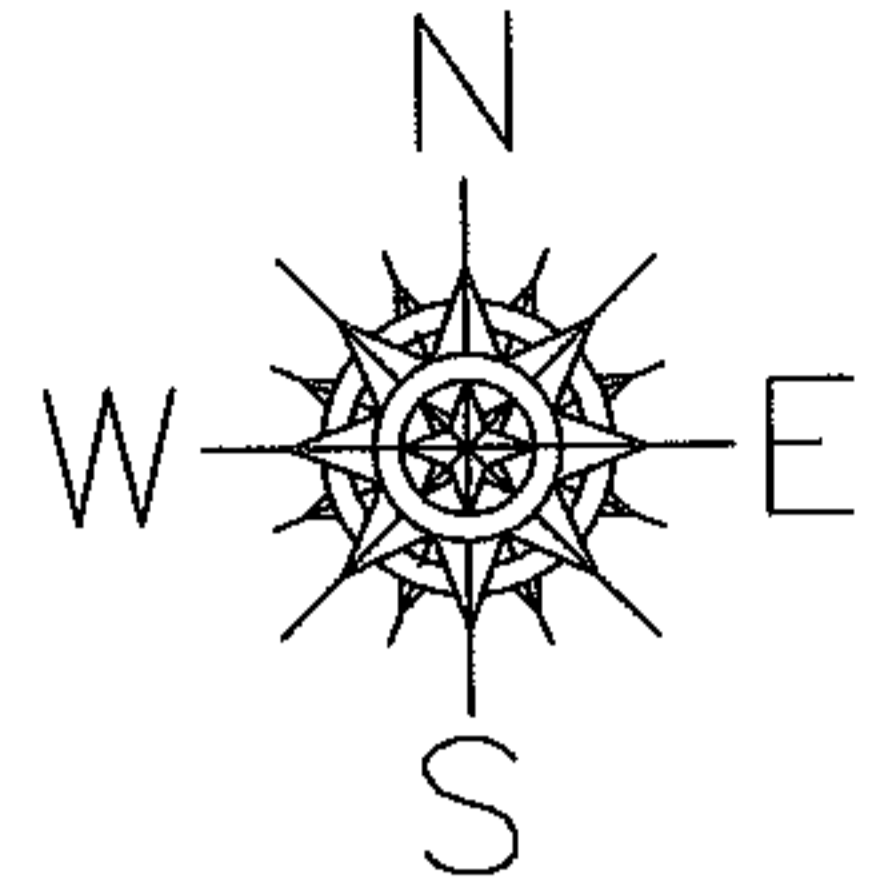
PARENT PARCEL: 04-00-030-130-019

CHILD PARCEL: --SAME--

STARTING POINT: SL 64 V.11 P. 28

06-01362-C

DEPTH CORR
PER PLAT



SPLITS/DEEDS PROCESSED
 LORAIN COUNTY TAX MAP DEPARTMENT
 226 MIDDLE AVE. ELYRIA, OHIO

SURVEYED BY: N/A
 CLOSURE: N/A
 MAP PAGE(S): 04-00-030-A
 APPROVED BY: DRH DATE: 6/27/2006
 SCALE: 1"=100 PRIOR INSTRUMENT: