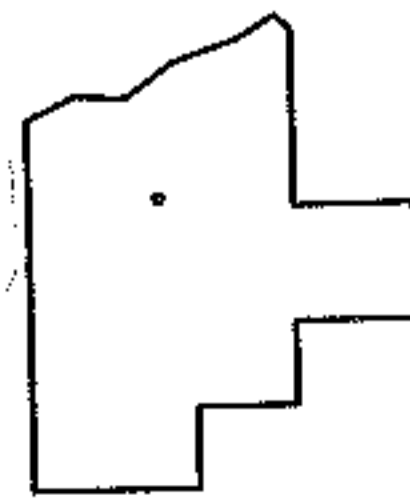
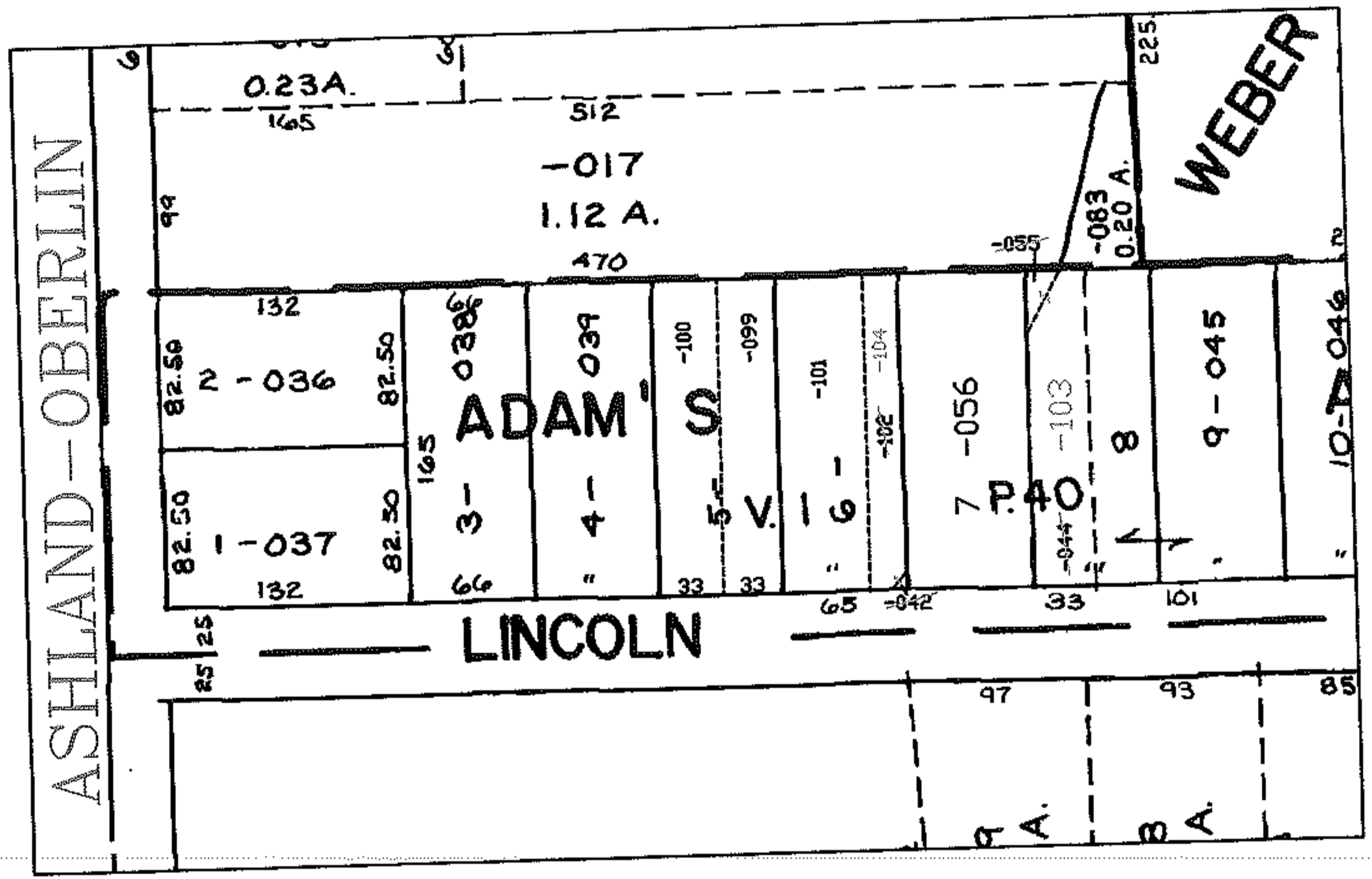
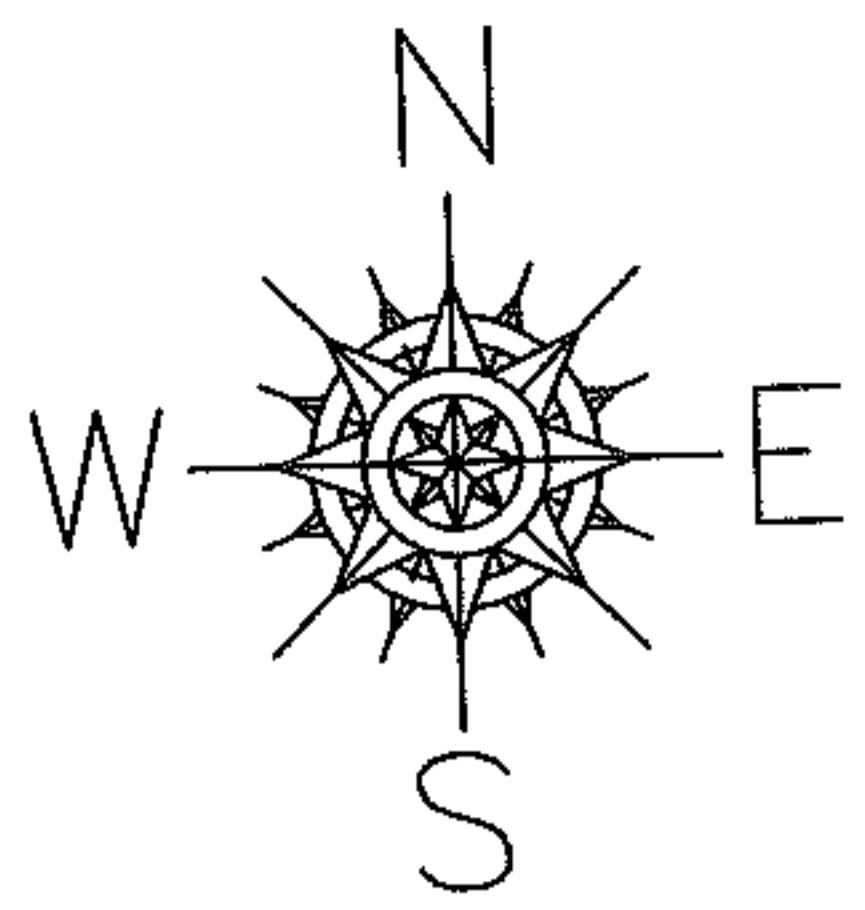


RASTER

PARENT PARCEL: 18-00-021-101-042, -044, -055, -102,
CHILD PARCEL: 18-00-021-101-103 & -104
STARTING POINT: INT N ROW OF LINCOLN ST AND E ROW OF ASHLAND-OBERLIN RD

06-01349-C

COMB PER SURVEY
CORRECTING ERROR IN
MAP DEPT.



SPLITS/DEEDS PROCESSED
LORAIN COUNTY TAX MAP DEPARTMENT
226 MIDDLE AVE. ELYRIA, OHIO

SURVEYED BY: THOMAS M. SNEZEK
CLOSURE: 1:10,000
MAP PAGE(S): 18-00-021-A
APPROVED BY: DRH DATE: 6/19/2006
SCALE: 1" = 200' PRIOR INSTRUMENT: 2004028278