

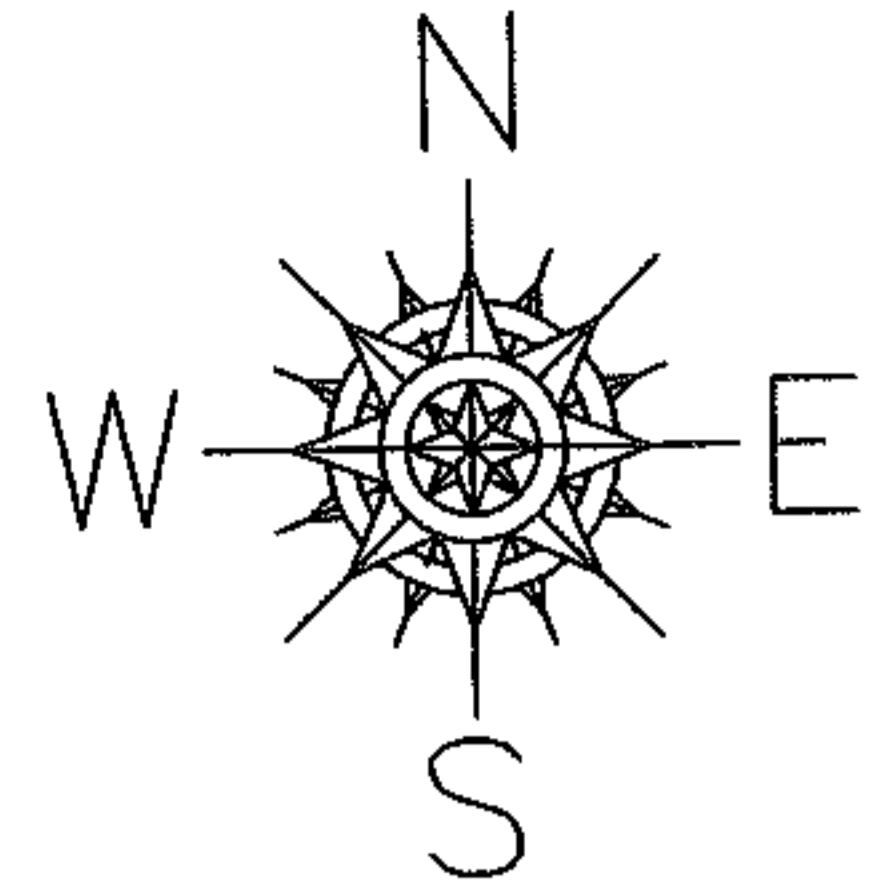
RASTER

PARENT PARCEL: 18-00-020-000-012

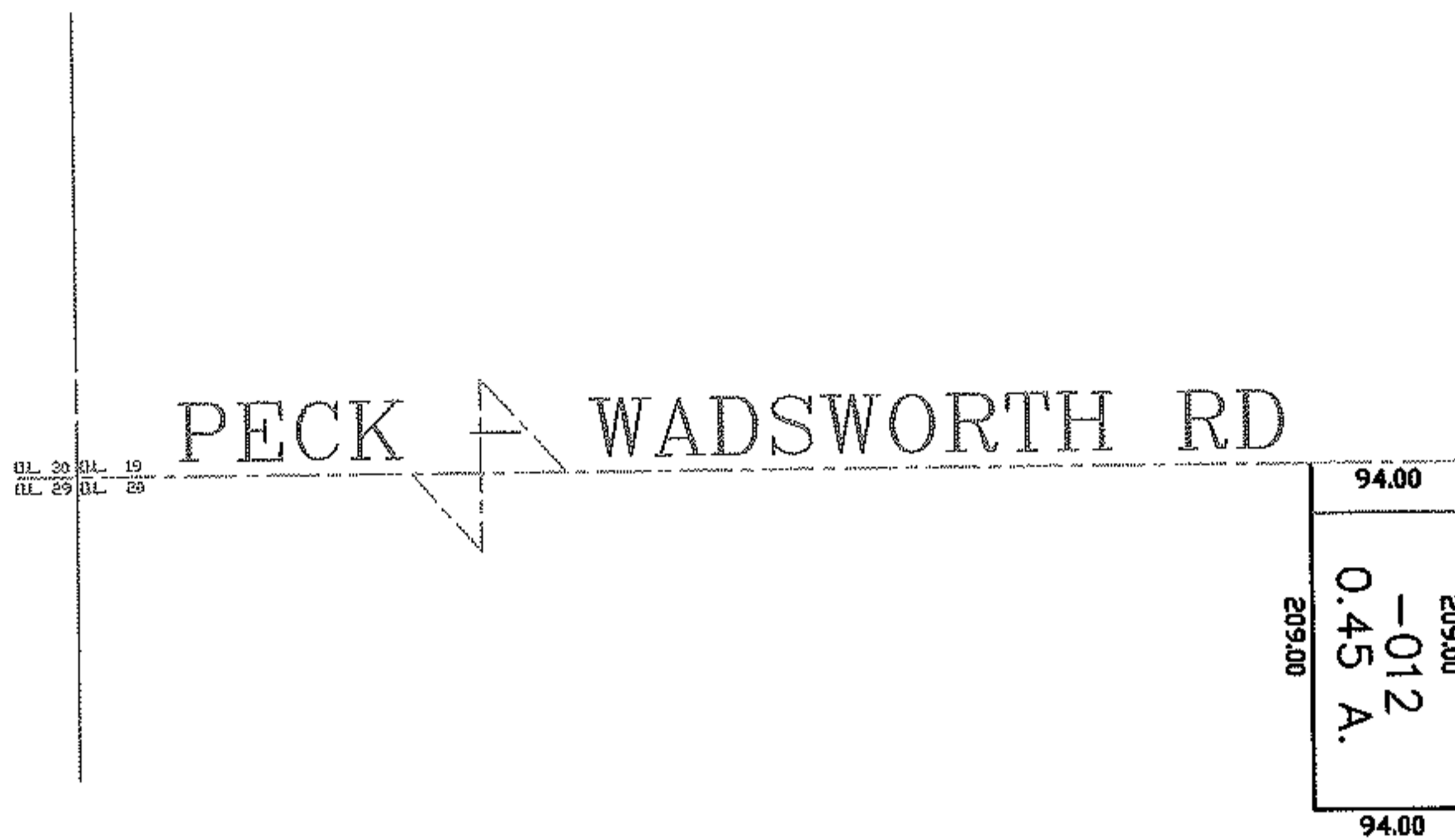
CHILD PARCEL: --SAME--

STARTING POINT:

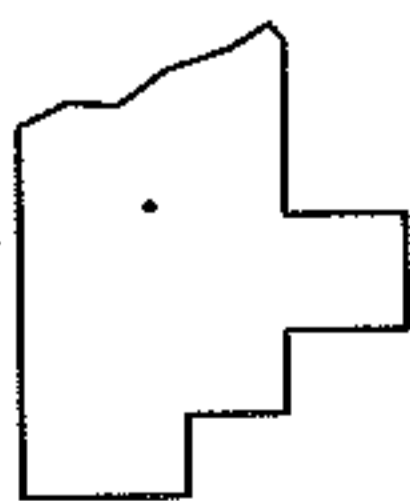
06-01345-A



MAP UPDATE ONLY



SURVEYED BY: RICHARD A. FREDRICKSON
 CLOSURE: 1:10.000
 MAP PAGE(S): 18-00-020-A
 APPROVED BY: DRH DATE: 6/5/2006
 SCALE: 1" = 200 PRIOR INSTRUMENT: 20060141555



SPLITS/DEEDS PROCESSED
 LORAIN COUNTY TAX MAP DEPARTMENT
 226 MIDDLE AVE. ELYRIA, OHIO